



Status Report Presented to the  
**CITIZENS GENERAL OBLIGATION  
BOND OVERSIGHT COMMITTEE**  
AUGUST 2011





## Program Budget Overview

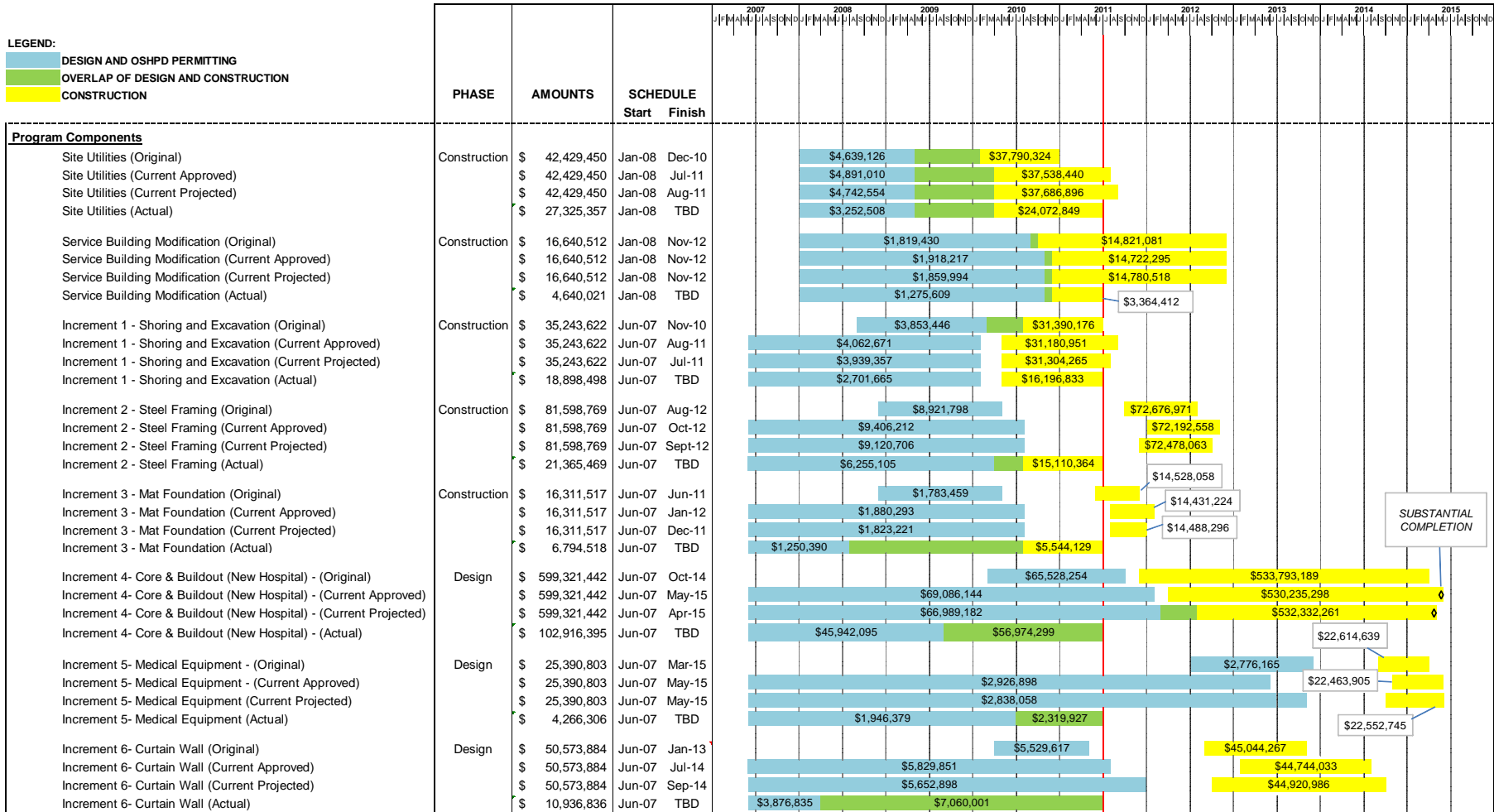
		FAMIS				
Project	Category	Baseline Budget	Budget (Appropriated)	Expended	Encumbered	Balance
		2008 G.O. Bonds	2008 G.O. Bonds	2008 G.O. Bonds	2008 G.O. Bonds	2008 G.O. Bonds
All Phases and Increments	Soft Costs	139,250,000	124,377,265	101,073,650	10,010,246	13,293,369
	Construction Costs	707,940,006	279,483,819	96,069,750	26,769,791	156,644,278
	Project Contingency	20,319,994	15,219,684		-	15,219,684
	<b>SUBTOTAL</b>	<b>867,510,000</b>	<b>419,080,768</b>	<b>197,143,400</b>	<b>36,780,038</b>	<b>185,157,331</b>
<b>SUBTOTAL FOR PROJECT COMPONENTS</b>		<b>867,510,000</b>	<b>419,080,768</b>	<b>197,143,400</b>	<b>36,780,038</b>	<b>185,157,331</b>
<b>PROGRAM SERVICES</b>						-
	Controller's Audit & Bond Issuance Cost	9,239,023	1,687,266	1,006,064	-	681,202
	Program Contingency	10,650,977	2,524,476	165,312	-	2,359,164
	Unallocated as of June 30, 2011		104,293	0		104,293
<b>SUBTOTAL FOR PROGRAM SERVICES</b>		<b>19,890,000</b>	<b>4,316,035</b>	<b>1,171,376</b>	<b>-</b>	<b>3,144,659</b>
<b>GRAND TOTAL</b>		<b>887,400,000</b>	<b>423,396,804</b>	<b>198,314,776</b>	<b>36,780,038</b>	<b>188,301,990</b>



# Gantt Chart (Costs Expended To Date)

**LEGEND:**

- DESIGN AND OSHPD PERMITTING
- OVERLAP OF DESIGN AND CONSTRUCTION
- CONSTRUCTION



**SUBSTANTIAL COMPLETION**

GRAND TOTAL	AMOUNTS
Original/Baseline	867,510,000
Current Approved	867,510,000
Current Projected	867,510,000
Actual Expended	197,143,400



## Program Progress Update

### Previous Quarter Accomplishments

#### Site & Tunnel Utilities:

- Complete except deferred PG&E & O2 Enclosures
- All Underground Tanks installed

#### Service Building:

- Interior concrete completed
- Emergency Generators & Switchgear Delivered & Placed in Basement
- Fuel Oil & MEP System Progressing
- Exterior Sitework nearly completed

#### New Hospital Project Site:

- Mass Excavation Completed
- Protection Slab Assembly Completed
- Waterproofing Completing this month
- Tower Crane Assembly Underway





## Program Progress Update

Current & Upcoming Activities

### Incremental Permits:

- Inc. 4 - Resubmitted for Back Check
- Inc. 5 - Design Finalization Underway
- Inc. 6 - Plan Approval Imminent

### Project Scope Buy-outs:

- 80% Contracted
- 15% Currently Bidding
- 5% Outstanding
- Received Trade Packages at 2% below 50% Construction Document Forecast

### Current Issues / Concerns:

- OSHPD Staffing - Inc. 4 Plan Review
- Remaining Trade Bid Buy-out Trend
- Low Voltage Systems Scope / Cost
- Equipment Seismic Certification

