



SEISMIC SAFETY:
The New Hospital and You



Making an Earthquake-safe SFGH



Present Hospital



New Hospital



Why Does Seismic Safety Matter?

- State law requires inpatient hospitals to meet strict seismic safety standards by 2020
- SFGH will be rebuilt by 2015!
- The only trauma center for SF and northern San Mateo counties



It's All About the Foundation

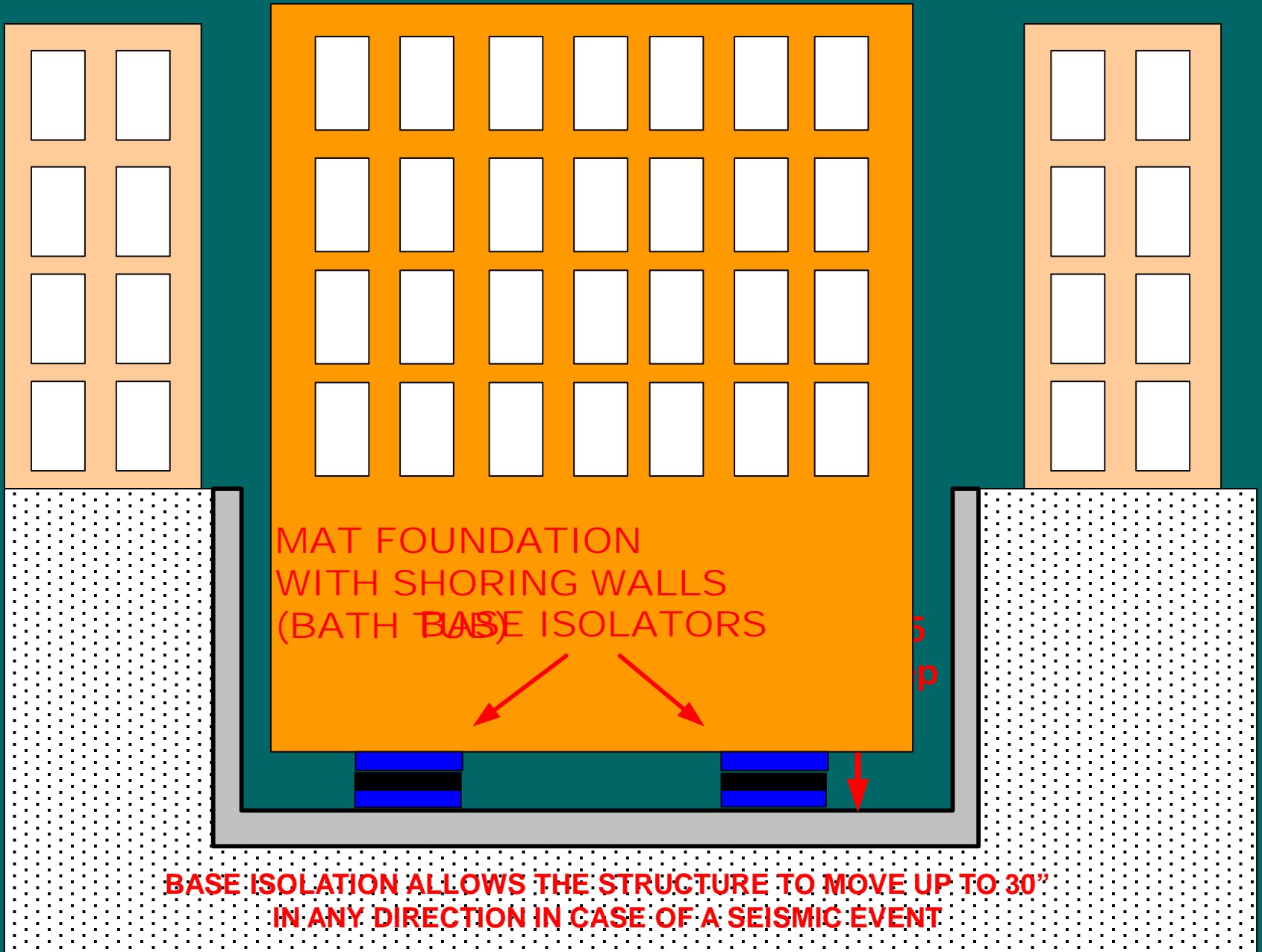
- Base isolated foundation has the best seismic resistance
- Rolling disks allow hospital to glide 30 inches during quake
- Hospital will remain open and operational after major quake



We Went With the Best Foundation!

Performance Comparison for 7.0 Earthquake	Conventional Steel Frame System	Buckling Restrained Brace Frame System	Steel Frame System with Base Isolation
Structural Impact	Significant damage	Moderate damage	No anticipated damage
Non-Structural Impact	Significant damage	Moderate damage	Moderate to minor damage – no closure
Closure/Costs*	Approximately six months/\$144M	Partial closure/\$30M	No anticipated closure
Patient Transfers/Costs	Transfers cost \$1M	No anticipated transfers	No anticipated transfers
Total Facility Costs per Event (estimated repair, closure and transfer costs)	\$173M	\$44M	\$6M

*Costs based on 3,150 FTE @ \$100,000/yr = \$6M/week





Test of Our Base Isolators





We Are Building the Foundation Now!

- We will dig 25 to 45 feet deep
- Approximately 80,000 cubic yards of soil will be removed (enough to fill 720 semi-trailers)





Safer, and Less Noisy

- No pile driving (that's loud and causes vibrations)
- Drill rigs will be used instead



Fighting Dust



- Dust is controlled by misting the site with water and constant sweeping of site

- A storm water management plan prevents dirt and mud from entering the city's storm system



Foundation Dig Sept 2010





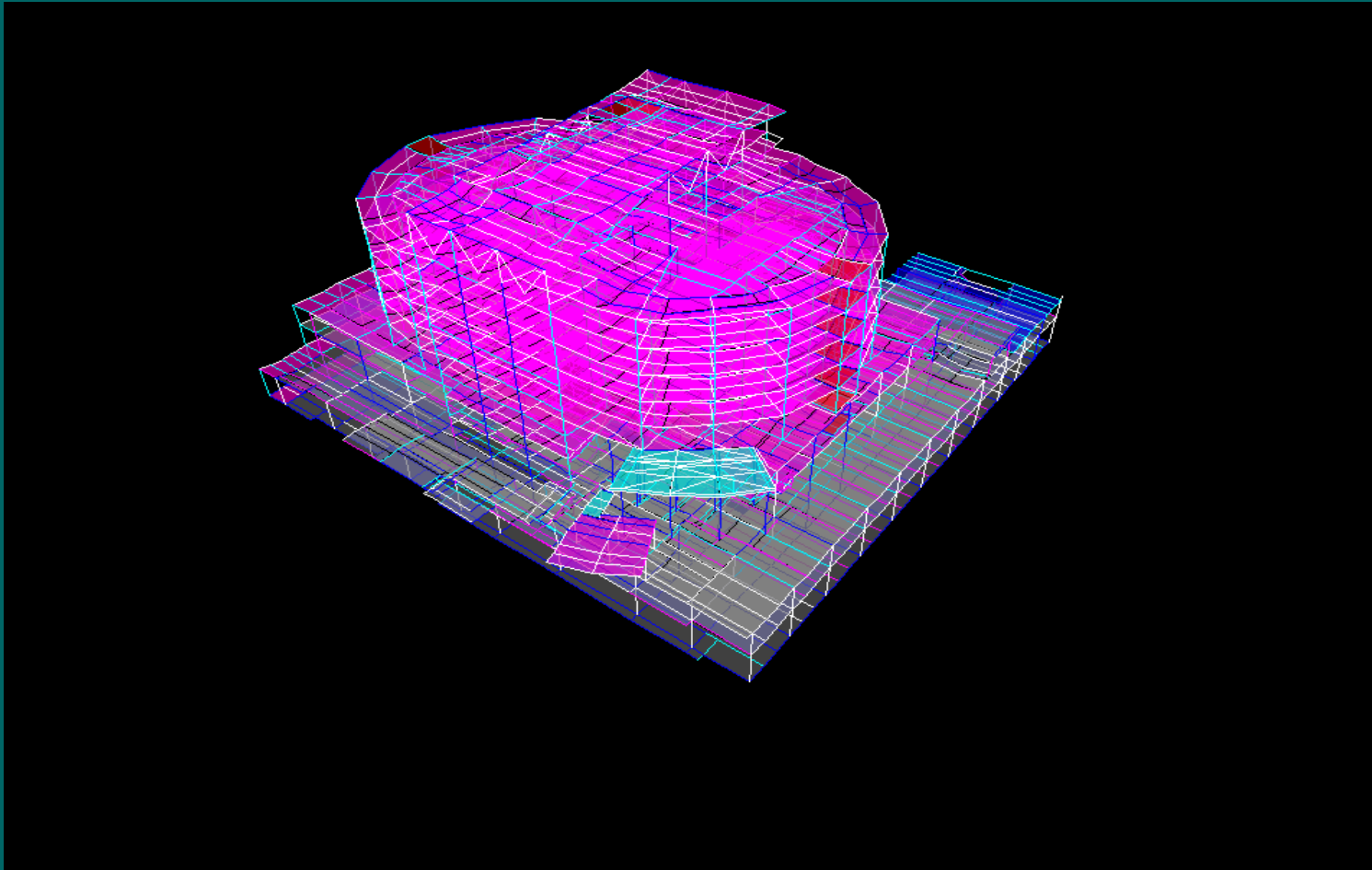
Ready for a Disaster

- More ways the new hospital will be prepared:
 - Decontamination showers*
 - Additional power sources in case of city-wide power loss*
 - Data back-up for patient information*
 - Underground water & sewage tanks can each hold 50,000 gallons*



New Hospital in 8.0 Earthquake

(The movement is exaggerated for design purposes)





Rebuild Information & Resources

Information:

- Telephone: 415-206-5784
- Email: sfgh_rebuild@sfdph.org
- www.sfdph.org/dph/RebuildSFGH

Safety:

- ***24-hour hotline*** 415-206-4500

Thank you San Francisco for your support!