

Environmental Health Complaint Data 2008-2010

- Data below reflects service requests (complaints) to environmental health initiated by the general public or referred by other public agencies.
- Future data will include service requests related to inadequate refuse collection.
- Data on the routine inspections of permitted establishments (e.g., restaurants) are not included here. These routine inspections conducted on a standard frequency for each establishment type. All permitted facilities receive routine inspections and variation among districts reflects only the variation in the number of establishments in the district.

Table 1 Environmental Health Complaints by District and Type (2008 - 2010)

DISTRICT	<i>Public Health Nuisances</i>	<i>Consumer Protection</i>	<i>Hotels and Emergency Shelter</i>	<i>Laundry</i>	<i>Lead</i>	<i>Massage</i>	<i>Medical Cannabis Dispensary</i>	<i>Noise</i>	<i>Smoking</i>	<i>Tattoo</i>	<i>Grand Total</i>
ONE	590	335	3	4	31	3	0	1	4	0	971
TWO	579	222	147	0	42	1	1	0	4	0	996
THREE	809	539	370	0	62	3	0	2	15	0	1,800
FOUR	755	288	0	0	52	0	0	3	2	0	1,100
FIVE	772	419	43	0	72	0	0	2	4	0	1,312
SIX	1,455	823	2,013	1	80	6	2	5	22	5	4,412
SEVEN	710	150	0	1	28	2	0	0	2	0	893
EIGHT	1,022	367	19	0	63	1	1	3	3	1	1,480
NINE	1,194	399	27	2	173	0	0	3	4	0	1,802
TEN	1,987	235	8	1	129	0	0	1	3	5	2,369
ELEVEN	1,190	151	1	1	92	0	0	0	2	1	1,438
No Address	779	163	101	1	13	1	3	1	1	1	1,064
Grand Total	11,842	4,091	2,732	11	837	17	7	21	66	13	19,637

Table 2 Environmental Health Complaints by Year

DISTRICT	YEAR			Grand Total
<i>District</i>	<i>2008</i>	<i>2009</i>	<i>2010</i>	
ONE	325	317	329	971
TWO	288	308	400	996
THREE	525	613	662	1,800
FOUR	330	348	422	1,100
FIVE	400	368	544	1,312
SIX	1,339	1,495	1,578	4,412
SEVEN	246	287	360	893
EIGHT	407	440	633	1,480
NINE	636	617	549	1,802
TEN	629	977	763	2,369
ELEVEN	466	511	461	1,438
No Address	636	209	219	1,064
Grand Total	6,227	6,490	6,920	19,637

Figure 1 Environmental Health Complaints by Year Comparison

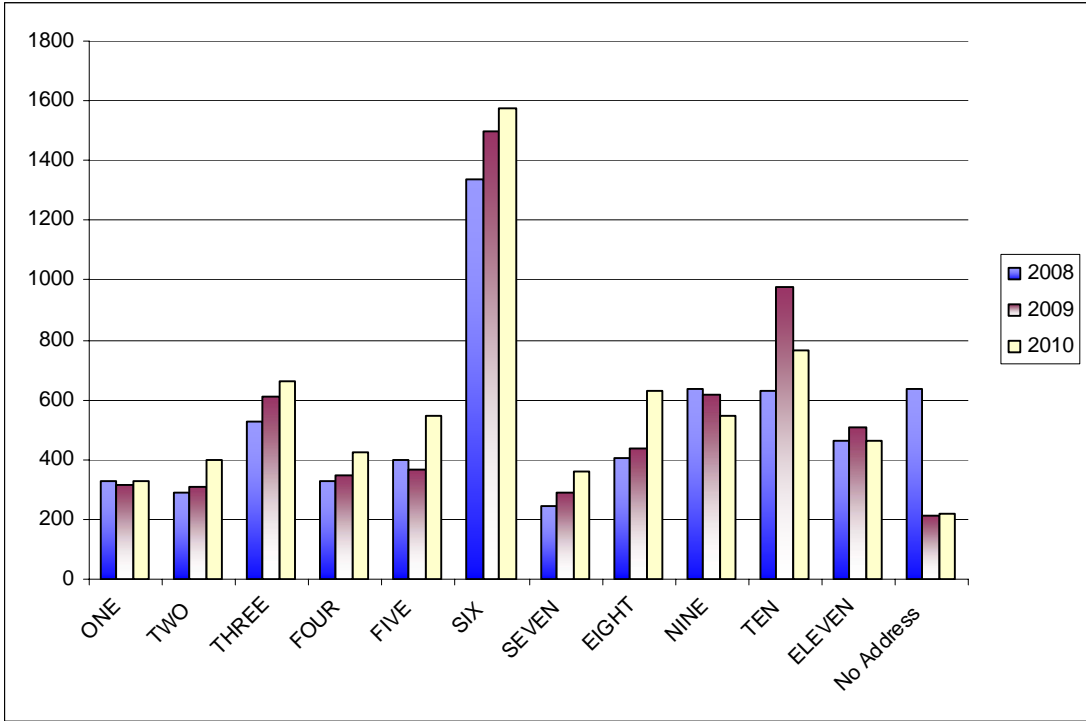


Figure 2 Environmental Health Complaints by District

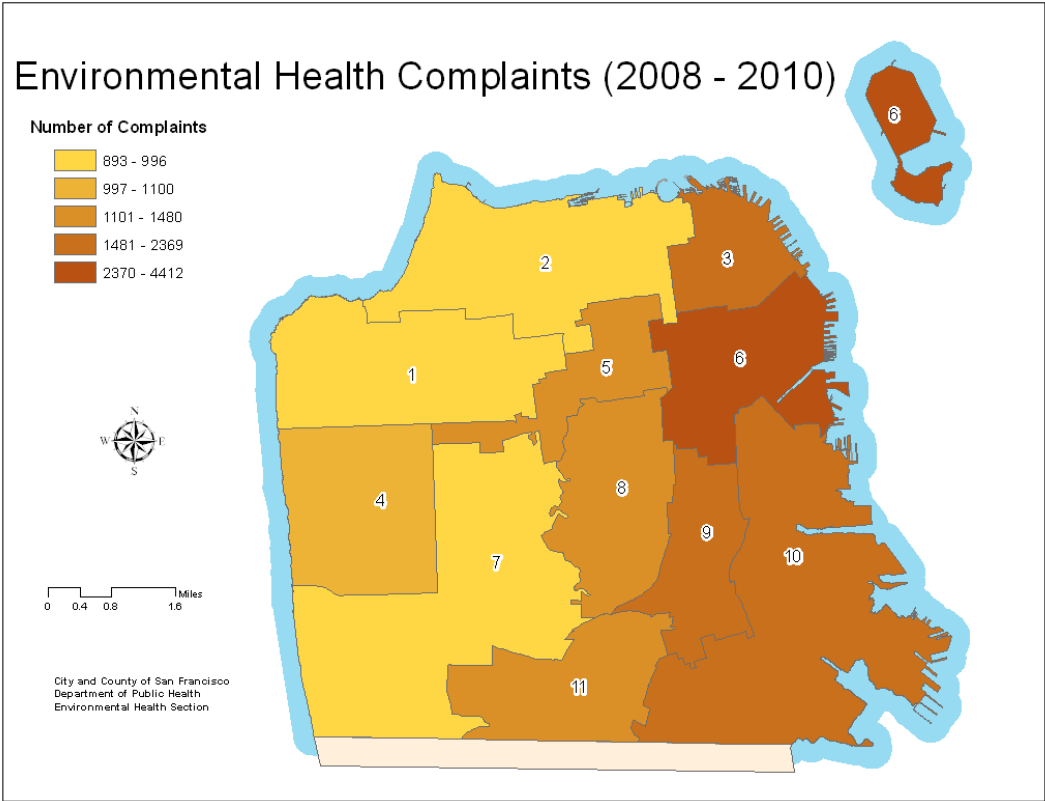


Table 3 Environmental Health Complaints by District, Type & Year (2008 - 2010)

Supervisor	Year	Public Health Nuisances	Consumer Protection	Hotels and Emergency Shelter	Laundry	Lead	Massage	Medical Cannabis Dispensary	Noise	Smoking	Tattoo
1	2008	187	125	4		11					
	2009	169	132	0	2	9	3		1	1	
	2010	234	78	1	2	11				3	
1 Total		590	335	5	4	31	3		1	4	
2	2008	132	77	136		11					
	2009	179	66	45		17	1				4
	2010	268	79	34		14		1			
2 Total		579	222	215		42	1	1			4
3	2008	180	193	218		38					5
	2009	294	180	121		13	3				2
	2010	335	166	140		11			2		8
3 Total		809	539	479		62	3		2		15
4	2008	220	92	0		16			2		
	2009	256	79	0		12			1		
	2010	279	117	0		24					2
4 Total		755	288	0		52			3		2
5	2008	199	153	58		19					
	2009	212	121	11		23			1		
	2010	361	145	3		30			1		4
5 Total		772	419	72		72			2		4
6	2008	365	301	1280	1	19	5				4
	2009	514	275	676		17	1		4		7
	2010	576	247	697		44		2	1	11	
6 Total		1455	823	2653	1	80	6	2	5	22	5
7	2008	181	57	0	1	6	1				
	2009	223	54	0		10					
	2010	306	39	0		12	1				2
7 Total		710	150	0	1	28	2				2
8	2008	287	99	8		15					1
	2009	300	116	6		12	1	1	3		1
	2010	435	152	9		36					1
8 Total		1022	367	23		63	1	1	3		3
9	2008	400	167	22	2	54					2
	2009	404	148	5		58			2		2
	2010	390	84	11		61			1		2
9 Total		1194	399	38	2	173			3		4
10	2008	490	81	12		50					2
	2009	837	88	1		47			1		3
	2010	660	66	1	1	32					3
10 Total		1987	235	14	1	129			1		5
11	2008	373	57	2		34					1
	2009	417	61	0	1	31					1
	2010	400	33	0		27					1
11 Total		1190	151	2	1	92					2
0	2008	438	110	146	1	9	1	2	1	1	
	2009	179	18	10		1					1
	2010	162	35	18		3		1			
No Address		779	163	174	1	13	1	3	1	1	1