



The Chief's Corner

By Jeff Critchfield
 SFGHMC Chief of Staff
 Phone: (415) 206-6078

Inside this issue:

The Chief's Corner	1
Pharmacy Corner	2
Library Updates	3
Heroes & Hearts Luncheon on February 12, 2009	4
Influenza Season Approaches!	5
New Hospital-Wide Initiatives	6
AWOL Patient is Discharged and Returns	7
Chief's Corner cont'd	8-9
Pharmacy cont'd	10
June—October Appointments & Resignations	11-14
October 2008—January 2009 Calendar of Events	15-17

CONGRATULATIONS TO ALL DURING JOINT COMMISSION SURVEY

Congratulations and thanks to all who contributed to our receiving accreditation from the Joint Commission! As always it was a great team effort on your part to maintain an appropriate level of readiness as we waited and waited through the spring and summer for the arrival of the surveyors. This collaborative spirit was on display throughout the week of the survey, an observation that continually impressed the surveyors, as they rarely had seen the medical staff working so closely with hospital staff in other hospitals. As luck would have it, the state independently decided to perform a Long Term Care Program survey, simultaneously with the Joint Commission. Iman and the Regulatory team were stretched thin managing all the surveyors, yet managed to keep things beautifully organized.

Overall the JC requested 9 Requirements for Improvements (RFIs) with 10 supplemental findings. The state offered 5 RFIs and 8 supplementals. Many of you have already begun the work of addressing the RFIs which, once fully implemented, will continue to improve safety for SFGHTC patients.

The success of this survey is a great indication of how our commitment to patient safety has paid off. At the same time, it's an important stimulus to motivate us to increase our efforts and commitment to patient safety. It's clear patient deaths and disability occur in every hospital. The National Patient Safety Goals, drawn from JC sentinel event reporting, point the way to areas of increased focus – health care associated infections, falls and medication management errors. Our patients expect that they will be safe when they come to the hospital and increasingly the regulatory agencies will demand that we can demonstrate we are meeting our patients' expectations. We look forward to working together to transform the operations of our health care delivery even as we plan to make the move to a transformational hospital structure in 2015.

PROPOSITION 'A' BALLOT MEASURE

At the time the presses roll for this newsletter, the city's voters will be in the last week of their deliberations regarding the Proposition A ballot measure proposing a general obligation bond to finance the building of a new hospital. Just as a reminder, the bond requires a 2/3s majority of voters to pass. In order to provide the best information to educate voters SFGHTC employees and medical staff have been talking to their neighbors about the issue, participating in precinct walks to answer questions from

(Continues on page 8)

We want to hear from you! Please direct questions or comments to:

Dan Schwager
 Medical Staff Services Director
 (415) 206-2365
 Dan.Schwager@sfdph.org

Cheryl Chin
 Medical Staff Newsletter Editor
 (415) 206-2346
 Cheryl.Me.Chin@sfdph.org



PHARMACY CORNER

By

Sharon Kotabe, PharmD

Associate Administrator, Pharmaceutical Services

Pharmacy Week

National Hospital and Health-System Pharmacy Week was celebrated, October 19-25, and October is also American Pharmacists Month. Especially during this time, pharmacy staff will be recognized for the work they do to advance the mission of the SFGH Department of Pharmaceutical Services, which is to deliver patient centered, scientifically advanced, clinically expert care.

New Laboratory-Therapeutics Subcommittee

Drug development and research are increasingly focused on genetic and other patient and drug-specific markers for predicting patient response and outcome. FDA approval either requires or will soon require some degree of laboratory testing for novel agents such as maraviroc (viral tropism) and older agents such as warfarin (genotype predisposed to bleeding events.) To address this growing interface between laboratory medicine and therapeutics, the Medical Executive Committee (MEC) approved the formation of a new subcommittee that will report activities to MEC through the P&T Committee. The new group will be called the Laboratory-Therapeutics Subcommittee, and Neal Benowitz will chair it. Other medical staff members of the Subcommittee are: Eberhard Fiebig, Walter Finkbeiner, and Alan Wu. Medical staff members interested in joining this group, which will be multidisciplinary, are encouraged to contact Neal Benowitz (nbenowitz@medstaff.ucsf.edu)

Formulary changes

Formulary Additions (** - full drug reviews available on CHN website)

- **Daptomycin** (Cubicin – Cubist)** - new class known as cyclic lipopeptides indicated for skin and soft structure infections caused by susceptible Gram positive bacteria. Use requires approval of Infectious Diseases consult services, and is restricted to patients with MRSA bacteremia who are (1) intolerant of vancomycin, (2) not adequately responding to vancomycin, or (3) have risk factors that predict poor outcome with vancomycin (e.g. vancomycin MIC >1mcg/ml.)
- **Etravirine** (Intelence – Tibotec)** - second generation nonnucleoside reverse transcriptase inhibitor indicated for use in combination with antiretroviral agents for the treatment of HIV type 1 infection in treatment-experienced adult patients. Initiation with of therapy for outpatients should be by the patient's primary HIV provider, and for inpatients in consultation with the inpatient AIDS or Infectious Diseases consult services.

Library Updates

By Terri Mason, Education and Information Services, 206-6638

<http://sfgldean.ucsf.edu/barnett/> email: library@sfgl.ucsf.edu 206-3114



NIH PUBLICATION POLICY

Are you feeling uncertain about NIH's new public access policy for publications resulting from NIH-funded projects? Did you know there is a new policy? Whether you're totally clueless or merely confused about the new law that requires NIH-funded researchers to deposit copies of their manuscripts in an open access repository called "PubMed Central", help is on the horizon. NIH has published updated [submission instructions](#) including a detailed explanation of the four submission methods and some [Frequently Asked Questions](#). If you're still confused, call us at 415-206-6639 with your questions. If we don't know the answer, we'll refer you to Marcus Banks, UCSF Library's scholarly publications expert. Joy Graham, MLS, AHIP - Library Manager

FREEBOOK DELIVERY SERVICE BETWEEN UCSF LIBRARY AND SFGH LIBRARY

Are there books you would like to read at the UCSF Parnassus library but you don't have time to go there to check them out? There is a new courier service between Parnassus, SFGH and Mission Bay libraries. You can order any circulating book you find in the [UCSF catalog](#) and specify SFGH Library as your pick up location. Place your request using the [Book Delivery Request form](#). You can also find a link to the form at our Library website: <http://sfgllibrary.ucsf.edu/> Books will usually be delivered in two business days. You need a UCSF Library borrowing account to use the book delivery service. If you don't already have one, grab your UCSF Campuswide ID card and call us at 206-3114 or stop by the library and we will set up a borrowing account for you in a few minutes.

PRINT JOURNAL SUBSCRIPTION CUTS

Last fall we made the announcement that in order to fund online resources for UCSF and SFGH affiliates, we planned to cut the library's print journal subscriptions. The decision was based on what we saw as dwindling use of print titles, rising subscription costs, and desire to fund electronic resources such as DynaMed, Nursing Reference Center, and online databases such as CINAHL and Medline with their accompanying full text journal content.

After we announced the cuts, we hunkered down to await the fallout. But aside from several requests to retain specific titles, the negative reaction never came. Is it true that the medical staff is so well served by the electronic journals licensed by UCSF that current print subscriptions aren't all that important any more...except maybe for browsing? If that's not true, we need to hear from you because it's that time of year again, and we're planning more print journal cuts. Here are some of the print subscriptions that are on the chopping block. They will continue to be available online:

- Academic Radiology
- Annals of Emergency Medicine
- Antimicrobial Agents and Chemotherapy
- Journal of Investigative Medicine
- Pediatrics in Review
- Scandinavian journal of Infectious Diseases
- Seminars in Thrombosis and Hemostasis
- Tranfusion

Free Classes at the Library—Fall 2008 Schedule

Getting Started with EndNote

Tuesday, October 28 1-2:30pm

Online Nursing Resources

Wednesday, November 5 10-11am

PubMed-Basics

Wednesday, November 19 11am-12pm

PubMed-Searching for Evidence

Tuesday, December 2 11am-12pm

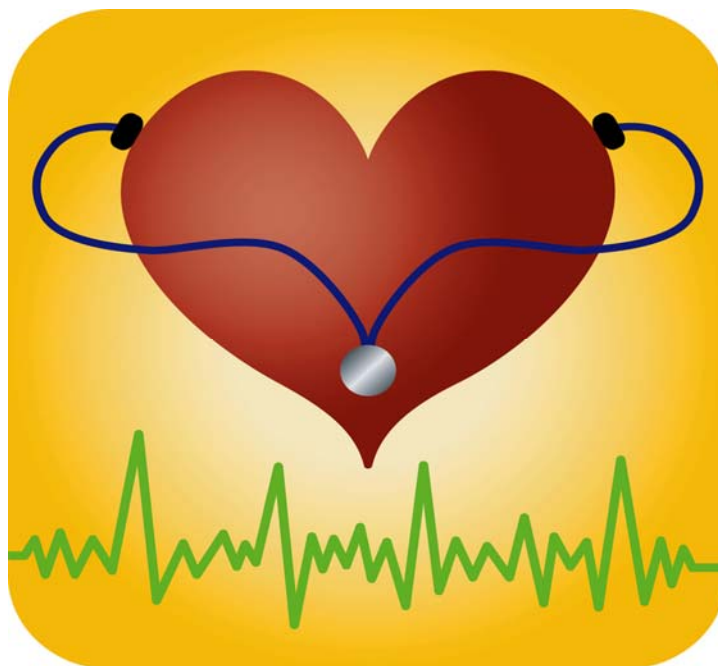
Wikis 4 All

Thursday, December 18 2-3pm

**SFGH FOUNDATION IS HOLDING ITS 4TH ANNUAL
HEROES & HEARTS LUNCHEON ON
THURSDAY, FEBRUARY 12, 2009 ON UNION SQUARE**

**SFGH IS FILLED WITH HEROES! PLEASE TELL US
THE STORY OF SOMEONE WHO HAS GONE ABOVE
AND BEYOND. WE ARE CURRENTLY SOLICITING
HEROES NOMINATIONS.**

**NOMINATIONS MUST BE RECEIVED BY MONDAY,
NOVEMBER 10, 2008. PLEASE CALL 206-5928 OR
VISIT SFGHF.NET FOR MORE INFORMATION.**



Influenza Season Approaches!!

Influenza vaccine will again be provided free of charge to all SFGH
campus workers!

Don't risk getting the flu or transmitting the flu to patients, colleagues, and families! This is a patient safety, employee health, and public health issue. All those who work on the SFGH campus are expected to get immunized. Research has shown that when there is a high rate of influenza immunization among health care workers in a facility, fewer patients become ill and die. California law (SB 739) requires a signed declination by all employees who refuse the vaccine and requires monthly reports on our compliance rates and number of declinations.

The Joint Commission also requires the vaccine for health care workers. For the 2008-09 season, anyone declining the vaccine must acknowledge and initial the following statements:

I am aware of the following facts:

- Influenza is a serious respiratory disease that kills, on average, 36,000 Americans every year.
- Influenza virus may be shed for up to 48 hours before symptoms begin, allowing transmission to others.
- Up to 30% of people with influenza have no symptoms, allowing transmission to others.
- Flu virus changes often, making annual vaccination necessary. Immunity following vaccination is strongest for 2 to 6 months. In California, influenza usually arrives in January and lasts through February or March.
- I understand that flu vaccine cannot transmit influenza. It does not, however, prevent all disease.
- I have declined to receive the influenza vaccine for the 2008-2009 season. I acknowledge that influenza vaccination is recommended by the CDC for all healthcare workers to prevent infection from and transmission of influenza and its complications, including death, to patients, coworkers, family, and community.

Declination forms will be available to employees following an educational presentation on HealthStream.

Employee Health Services (EHS) will provide vaccine clinics with schedules posted throughout the hospital and on the DPH website. Again this year, EHS will have "roving" carts that will visit all units. Vaccine information sheets (VIS) and other vaccine-related information will be available at all immunization sites. If unable to attend a clinic please call Employee Health at 206-3769.



New Hospital-Wide Initiatives July 1, 2008

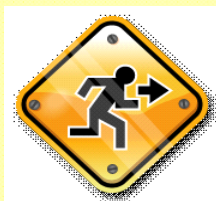
Smoke-Free Campus

Linda Henson, Andy Brunner and Troy Williams

San Francisco General Hospital and Trauma Center is proud to announce that we are now a smoke-free campus. The Smoke-Free Campus initiative has been a tremendous success! A multidisciplinary task force was convened in October 2007 to plan for this new initiative. The task force approached this issue from many different perspectives including:

- A. Screening patients for tobacco use on admission
- B. Offering smoking cessation interventions to patients while hospitalized
- C. Providing referrals in the community for long term success
- D. Educating staff
- E. Providing staff resources

We are pleased to announce that the implementation went very smoothly with very little negative response from patients or staff. This is an on-going effort to maintain a healthy environment for our patients, visitors and staff. We appreciate your continued support and commitment to this very important healthcare initiative. For more information please refer to SFGH Administrative Policy 19.11.

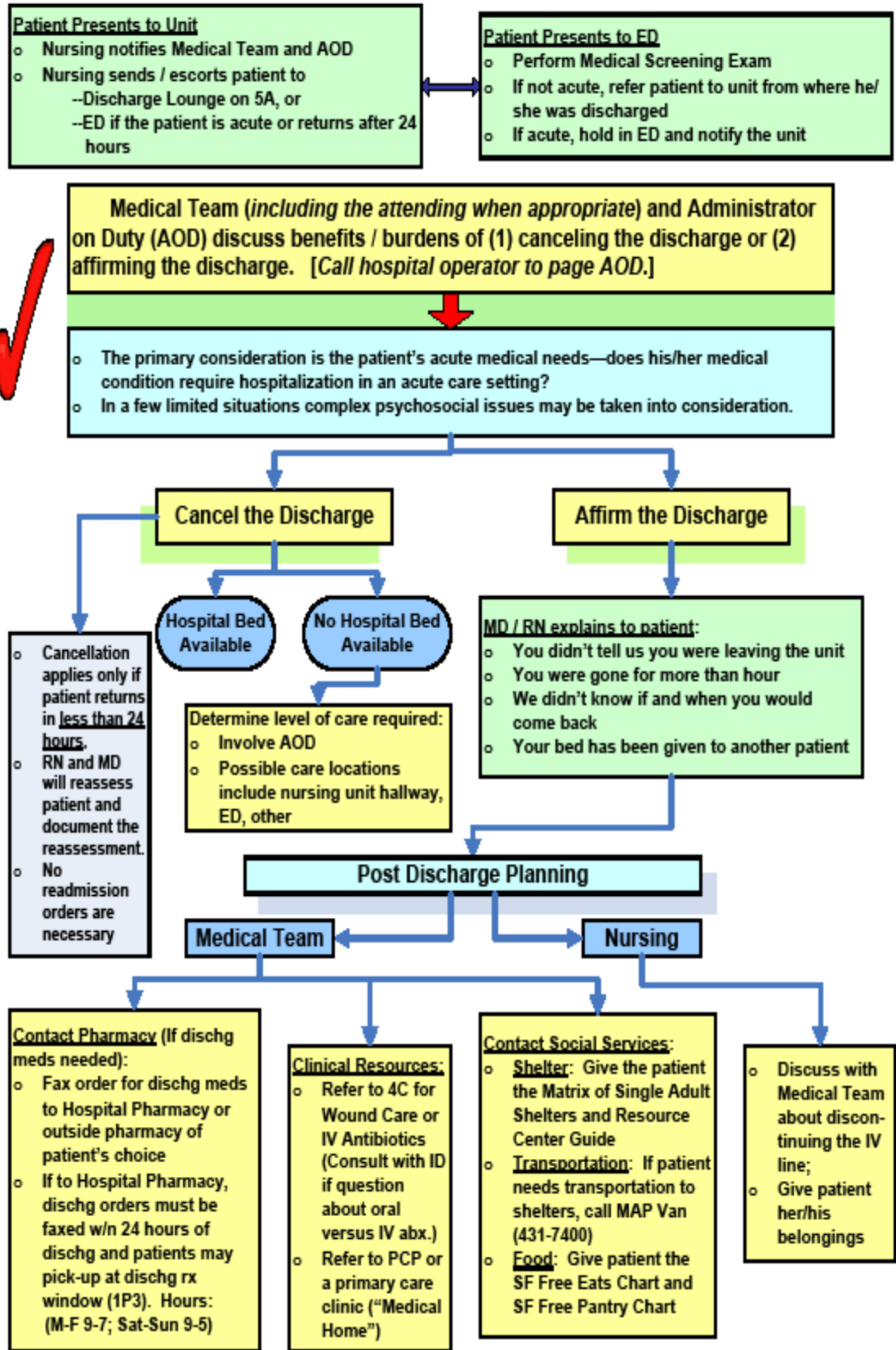


AWOL Initiative

Andy Brunner and Troy Williams

San Francisco General Hospital and Trauma Center also created a task force to develop a clear and uniform response for patients who leave AWOL. Beginning July 1, 2008 patients who leave their assigned units for greater than one hour may be discharged AWOL. A new protocol has been developed for patients who return to the hospital after being discharged AWOL. The key component to this new protocol is an assessment of whether the returning patient truly has acute medical care needs. If the patient is determined to have acute medical care needs the patient's primary medical team will discuss bed availability with the Administrator on Duty (AOD). Another important component to this initiative has been patient education and to date we have seen less AWOLs than before implementation. For more details see the flow chart on page 7 and SFGH Administrative Policy 1.10.

AWOL Patient is Discharged and Returns



7/23/06
LPolicies/AWOL Return Flow Chart

walks to answer questions from the voters and working in phone banks to provide information. All of these activities occur on the employees' personal time and represent educational opportunities. If you would like to learn more about how to participate in these events please contact Rachael Kagan at rachaelkagan@hotmail.com. This is a great opportunity to share with San Francisco the remarkable work that goes on here at the General.



IMPLEMENTATION OF NATIONAL PATIENT SAFETY GOALS

Beginning in 2003, the Joint Commission has released a number of National Patient Safety Goals and mandated that all accredited healthcare organizations implement these goals. The National Patient Safety Goals seek to focus the efforts of health care organizations on the priority areas where the opportunities for improving patient safety are greatest. The Joint Commission believes that consistently putting these requirements into action will benefit millions of patients. SFGH leadership has proposed that the medical staff consider taking further steps to ensure compliance with the Joint Commission National Patient Safety Goals. A memo outlining proposed action plans to address compliance with the Joint Commission NPSGs was circulated with the following specific steps identified:

- (1) an embrace by the Service Chief that safety and regulatory compliance ranks with clinical care, teaching, and research as an academic mission
- (2) emphasize the importance of safety and regulatory compliance to trainees
- (3) develop and implement departmental specific plans for improving safety and regulatory compliance
- (4) develop and implement a cross discipline approach to ensuring quality, safety, and regulatory compliance in specific department areas.

MEC members acknowledged that compliance with NPSG is the right thing to do for patients, and the right thing to do for medical trainees who will be practicing in environments with these same expectations.

DR. GEOFFREY MANLEY APPOINTED AS CHIEF, NEUROSURGERY SERVICE

The Medical Executive Committee approved the appointment of Dr. Geoffrey Manley as the Chief of the SFGH Neurosurgery Service.

Dr. Manley is an Associate Professor in Residence of Neurological Surgery, co-Director and Principal Investigator, Brain and Spinal Injury Center and Chief of Neurotrauma, SFGH. His specialty interests lie in the repair of injury to the central nervous system. Among Dr. Manley's research interests are investigations of brain oxygenation during hemorrhagic shock, the role of aquaporin water channels in cerebral water transport, direct measurement of oxygenation and metabolic, cellular, and molecular responses in clinically relevant animal models of brain injury, and metabolic monitoring of severely injured patients during resuscitation and critical care.

CT SCANNER TRAILER APPROVED

MEC was informed that the CT Scanner trailer in the parking lot has been approved for use. The scanner will initially be used to reduce the backlog of outpatients. Drills and training will be undertaken for potential transport of stable inpatients to the trailer. Dr. Mark Wilson, Chief, SFGH Radiology Service reported that the construction of the first in-house scanner is planned in October, and several contractors have submitted bids.

SMOKE FREE CAMPUS BEGAN JULY 1

Smoke Free Campus initiative began July 1st. Inpatient providers are working closely with nursing representatives to educate patients about nicotine addiction management strategies. Pre-printed nicotine replacement order sheets are available on all the inpatient wards and soon will be included in the admission packet of all patients to serve as a trigger to address smoking issues with all patients early during the hospitalization. Recent studies demonstrate that over 50% of SFGHTC patients have smoked within several days of their admission to the hospital. Colleagues at the UCSF Parnassus campus are watching our program closely as they make their own preparations for a smoke-free campus.

TWO PROGRAMS RECEIVED RECOGNITION AT NAPH CONFERENCE

Two SFGHTC programs received recognition at the NAPH annual conference. The Trauma “Wraparound” project at SFGH received an award for reducing health care disparities. The ACE unit at SFGHTC received an honorable mention award for innovations in patient safety. Channel 2 KTVU ran a very nice segment on the evening news of the work of the ACE. The story acknowledged that SFGH is a national leader in trauma care and now was demonstrating innovation in the care of hospitalized elderly patients.



PHARMACY

(Continued from page 2)

- Maraviroc (Selzentry – Pfizer)** - selective chemokine receptor CCR5 antagonist with potent anti-HIV-1 activity. Prior to therapy, patient should have a documented infection of a CCR5 tropic strain of HIV, and the drug should be reserved for treatment-experienced patient populations. Initiation with of therapy for outpatients should be by the patient's primary HIV provider, and for inpatients in consultation with the inpatient AIDS or Infectious Diseases consult services.
- Calfactant (Infasurf – Forest)** - lung surfactant indicated for prophylaxis of respiratory distress syndrome in infants <30 weeks gestation and treatment of RDS in preterm and term infants. Use restricted to NICU and pediatrics.
- Trisodium Citrate** – 4% solution used as an anticoagulant locking solution for dialysis catheters. Use restricted to patients who cannot receive heparin locks due to either heparin sensitivity or history of heparin-induced thrombocytopenia.

Formulary Modifications

- Entecavir (Baraclude) – Include Drs. Hare and Leutkemeyer on list of providers authorized to prescribe the drug for HBV/HIV co-infected patients.
- Naloxone Injection 0.4mg/ml (Narcan) – Allow dispensing by outpatient pharmacies upon prescription directly to patients as an aid for DPH “harm reduction” efforts.
- Memantine (Namenda – Forest) – Include psychiatrists on list of providers authorized to prescribe drug for the treatment of dementia.

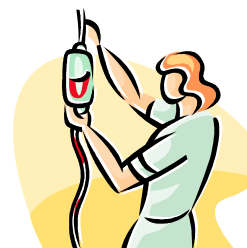
Formulary Deletions

- Trimetrexate (Neutrexin injection) – No longer manufactured.
- Beractant (Survanta – Ross) – Replaced by Calfactant as the hospital's Formulary lung surfactant agent.



June - July 2008

New Appointments & Resignations



June 2008 - NEW APPOINTMENTS

LAST NAME	FIRST NAME	DEGREE	DEPARTMENT
Aghi	Manish	MD	Neurosurgery
Lansenderfer	Candacean	CRNA	Anesthesia
Law	Kwong	MD	Psychiatry
Palanisamy	Akilesh	MD	Family and Community Medicine
Powell	Katherine	NP	Psychiatry
Schmidt	Caren	PsyD	Psychiatry
Singh	Sareena	MD	Community Primary Care

June 2008 -RESIGNATIONS

LAST NAME	FIRST NAME	DEGREE	DEPARTMENT
Bloom	Allan	MD	Radiology
Dutta	Durba	MD	Radiology

July 2008 -RESIGNATIONS

July 2008

NEW APPOINTMENTS

LAST NAME	FIRST NAME	DEGREE	DEPARTMENT
Bapna	Sumit	MD	Otolaryngology
Chan	Matilda	MD	Ophthalmology
Chen	James	MD	Radiology
Chen	Julie	MD	Ophthalmology
Crouch	Pierre-Cedric	MSN, NP	Medicine - Clinical Research Ctr.
Denianke	Kwame	MD	Dermatology
Douglas	Vanja	MD	Neurology
Duong	David	MD	Emergency Medicine
Gregoratos	Gabriel	MD	Cardiology
Gore	Melissa	NP	Family and Comm. Medicine
Ferrigno	Lisa	MD, MPH	Surgery
Hajian	Hagop	MD	Community Primary Care
Hess	Christopher	MD	Radiology
Ho	Emily	MD	Neurology
Kates	Laura	MD	Emergency Medicine

LAST NAME	FIRST NAME	DEGREE	DEPARTMENT
Katz	Kenneth	MD	Dermatology
Kerns	Jennifer	MD	Ob/Gyn
Kwan	Elizabeth	MD	Emergency Medicine
Letsinger	Julie	MD	Dermatology
Lucco	Kerith	MD	Obstetrics and Gyn.
Mandac-Dy	Janis	MSN, NP	Pediatrics
Moscato	Eve	MD	Ophthalmology
Meyer	Ana-Claire	MD	Neurology
Myer	Jeremy	MD	Urology
Nyongo	Omondi	MD	Ophthalmology
Okumura	Megumi	MD	Pediatrics
Rodriguez	Maria	MD	Ob/Gyn
Rutar	Tina	MD	Ophthalmology
Seballos	Benilda	MD	Family and Comm. Med.
Somsouk	Ma	MD	Medicine - Gas.
Stafford	Margaret	MD	Family and Community Med.
Thant	Ronald	MD	Radiology
Tran	Nam	MD, PhD	Obstetrics and Gyn.
Weiser	Sheri	MD	Medicine
Wynn	Paula	MD	Ophthalmology
Yung	Katherine	MD	Otolaryngology

August 2008

New Appointments & Resignations

August 2008 – NEW APPOINTMENTS

LAST NAME	FIRST NAME	DEGREE	DEPARTMENT
Baxley	Frances	MD	Family and Community Med.
Bhamra	Jamie	MD	Ophthalmology
Benitez	Christopher	MD	Psychiatry
Brooks	Richard	MD	Medicine - Hospital Med.
Cooperberg	Matthew	MD	Urology
Davis	Elizabeth	MD	Medicine - Hospital Med.
Dunham	Christopher	MD	Psychiatry
Evertt	Charles	MD	Medicine - Hospital Med.
Fidelman	Nicolas	MD	Radiology
Herrera	Christina	MSN, NP	Otolaryngology
Hoskins	Eliza	MD	Ophthalmology
Huen	William	MD	Medicine - Hospital Med.
Jagannathan	Prasanna	MD	Medicine - Hospital Med.
Jeng	Bennie	MD	Ophthalmology
Kanada	Daniel	MD	Radiology
Khalifa	Yousuf	MD	Ophthalmology
Lee	Isabel	MD	Family and Community Med.
Mar	Linda	DO	Radiology
McEntee	Rebecca	MD	Family and Community Medicine
Robinson	Tiffany	MD	Radiology
Sanico	John	MD	Radiology
Strausser	Bimmie	MD	Psychiatry
Suh	Ki-Young	MD	Dermatology
Van Uden	John	MD	Radiology
Virata	Jodi	PA	Obstetrics and Gynecology
Weyer Jamora	Christina	PhD	Psychiatry
White	Meghan	MSN, NP	Surgery
Wilkins	Karl	MD	Dermatology
Wu	Sandy	NP	Community Primary Care
Yoon	Michael	MD	Ophthalmology
Yuh	Esther	MD	Radiology



August 2008 -RESIGNATIONS

LAST NAME	FIRST NAME	DEGREE	DEPARTMENT
Aweeka	Francesca	MD	Medicine
Babik	Jennifer	MD	Medicine - DGIM
Chen	Fred	MD	Radiology
Ende	Kevin	MD	Otolaryngology
Goldman	Samuel	MD	Medicine - Occ. Med
Gordon	Roy	MD	Radiology
Hilton	Chris	CRNA	Anesthesia
Hong	Clemons	MD	Community Primary Care
Hwang	Thomas	MD	Ophthalmology
Kasper	Richard	MD	Anatomic Pathology
Learman	Lee	MD	Obstetrics and Gyn.
Lee	Benjamin	MD	Radiology
McClure	Peter	MD	Radiology
Mendelson	John	MD	Medicine - Clinical Pharm
Monto	Alexander	MD	Medicine - Gast.
Naugle	David	MD	Radiology
Novak	Bradley	MD	Psychiatry
Palmer	David	MD	Radiology
Parker	Ellen	MD	Radiology
Power	Karron	MD	Medicine - Occ. Med.
Rogers	David	MD	Medicine - Occ. Med.
Sacchetti	Antonia	MD	Pediatrics
Sajewicz	Anthony	MD	Radiology
Tice	Jeffrey	MD	Medicine - DGIM

September 2008

New Appointments

LAST NAME	FIRST NAME	DEGREE	DEPARTMENT
Andersen	Erin	MSN, NP	Family and Community Medicine
Arora	Sanjay	MD	Emergency Medicine
Bacon	Oliver	MD	Medicine - Positive Health
Barton	Jennifer	MD	Medicine - Rheumatology
Bertheau	Daniel	MS, NP	Orthopedic Surgery
Davis	Cole	MD	Urology
Davis	Natalie	MD	Pediatrics
Downey	Carolyn	MSN, NP	Orthopedic Surgery
Dragoman	Ashley	MD	Pediatrics
Durack	Jeremy	MD	Radiology
Ehmer	Nathan	DO	Orthopedic Surgery
Eisner	Brian	MD	Urology
Fitterer	Barbara	PA	Surgery
Gandhi	Monica	MD	Medicine - Positive Health
Gluck	Stephen	MD	Medicine - Nephrology
Greenhouse	Bryan	MD	Medicine - Infectious Disease
Gootnick	Susan	MD	Radiology
James	Tatum	MD	Radiology
Kilian	Barbara	MD	Emergency Medicine
Kim	Lena	MD	Obstetrics and Gynecology
Lakshmi	Magge	MD	Radiology
Lydell	Carmen	MD	Radiology
Michels	Tricia	MD	Pediatrics
Miller	Madeline	MD	Family and Community Medicine
Miskell	Whitney	MSN, NP	Obstetrics and Gynecology
Nakagawa	Kazuma	MD	Neurology
Neff	Deena	MD	Family and Community Medicine
Odom	Kara	MD	Family and Community Medicine

LAST NAME	FIRST NAME	DEGREE	DEPARTMENT
Pekmezci	Murat	MD	Orthopedic Surgery
Rao	Madhu	MD	Medicine - Endocrinology
Scanlon	Jennifer	MSN, NP	Medicine - Positive Health
Shih	Grace	MD	Family and Community Med.
Sligar	Kristen	MN, NP	Obstetrics and Gynecology
St. Pierre	Jeanne	MD	Psychiatry
Throckmorton	Alyssa	MD	Surgery
Triandafyllis	Karen	MSN, NP	Psychiatry
Trustman	Adrienne	MD	Community Primary Care
Weinberg	Melissa	MD	Medicine - Endocrinology
Werner	Brian	MD	Orthopedic Surgery
Westergren	Gabrielle	CNM	Obstetrics and Gynecology
Zusman	Alexander	MD	Pediatrics

September 2008 - RESIGNATIONS

LAST NAME	FIRST NAME	DEGREE	DEPARTMENT
Aulakh	Ritika	DO	Community Primary Care
Berlin	Amy	MD	Psychiatry
Carson	Rebecca	NP	Orthopedic Surgery
Chang	Jaime	MD	Otolaryngology
Choi	Miran	MD	Psychiatry
Chopra	Gurpreet	MD	Psychiatry
DiThomas	Michele	MD	Family & Community Med.
Friedlander	Paige	MD	Psychiatry
Kim	Hubert	MD	Orthopedic Surgery
Manning	James	MD	Psychiatry
Matthews	Brandy	MD	Community Primary Care
Schiller	Mark	MD	Psychiatry
Steingart	Karen	MD	Medicine - Pulmonary Med.
Tsai	Sandra	MD	Community Primary Care
Wachter	Robert	MD	Medicine - Internal Medicine
Yang	Laura	MD	Community Primary Care

October 2008

New Appointments & Resignations



October 2008 - NEW APPOINTMENTS

LAST NAME	FIRST NAME	DEGREE	DEPARTMENT
Adler	Felix	MD	Radiology
Buljan	Michael	MSN, NP	Medicine - Hematology/ Oncology
Davis, Jr.	John	MD	Medicine - Pulmonary/ Crit. Care
Eshoo	Erica	MSN, NP	Orthopedic Surgery
Evert	Jessica	MD	Family and Community Medicine
Foster	Rochelle	MSN, NP	Community Primary Care
Grieco	Katherine	DO	Medicine - Positive Health
Hewitson	Josephn	DPM	Orthopedic Surgery
Hobart	Christopher	MD	Community Primary Care
Hogeling	Marcia	MD	Dermatology
Horton	Claire	MD	Medicine - General Internal Med
Kaufman	John	MD	Radiology
Lee	Juliette	MD	Dermatology
Perlas	Jane	MSN, NP	Medicine - DGIM
Walsh	Thomas	MD	Urology
Wilson	Bridget	MSN, NP	Orthopedic Surgery

October 2008 -RESIGNATIONS

LAST NAME	FIRST NAME	DEGREE	DEPARTMENT
Bamberger	Debbie	NP	Obstetrics and Gynecology
Collins	Zoe	PsyD	Psychiatry
Enriquez	Annette	MD, PhD	Community Primary Care
Gelber	Robert	MD	Medicine - Pulmonary Medicine
Holbrook	Karen	MD	Medicine - Pulmonary Medicine
Kochanska	Marta	MD	Medicine - Pulmonary Medicine
Leoung	Gifford	MD	Medicine - Pulmonary Medicine
Lucas	Shawn	MD	Anesthesia
Newfield	Phillipa	MD	Anesthesia
Pena-Dolhun	Eduardo	MD	Family and Community Med
Royce	Sarah	MD	Medicine - Pulmonary Medicine
Schecter	Gisela	MD	Medicine - Pulmonary Medicine
Smith	Stefanie	MD	Medicine - Pulmonary Medicine
Steingart	Karen	MD	Medicine - Pulmonary Medicine
Tsai	Sandra	MD	Community Primary Care
Watt	James	MD	Medicine - Pulmonary Medicine
Woo	Jean	MD	Medicine - Pulmonary Medicine



October – November 2008

Calendar of Events

- October 27, Credentials Committee**, 12:00pm – 2:00pm,
Nuc Med Conference Room, Level G, Chair: Dr. Gelb, ext. 5754
- October 27, Ethics Committee**, 12:00pm – 1:00pm, Café #3
Chair: Dr. Jain, ext. 4987
- October Antibiotic Advisory Committee**, Date TBA, Café #3
Chair: Dr. Chambers, 206-5437
- October Pain Management Sub-committee**, Date TBA
Chair: Dr. Drasner, ext.8267
- November 3, Formulary Review Committee**, 12:30pm – 2:00pm, Café #3
Chair: Dr. Simons, 682-1900
- November 6, Administrative MEC**, 7:30am – 9:00am, 2A6
- November 10, Clinical MEC**, 12:00pm – 2:00pm, 2A6
- November 10, JCC**, 3pm – 5:30pm, 2A6
- November 11, Operating Room Committee**, 7:00am – 8:00am, Café #1
Chair: Dr. Marks, ext. 8145
- November 14, MUSS Committee**, 8:00am – 9:30am, Café #3
(1 week early due to Thanksgiving Holiday)
Chair: Dr. Dempsey, 502-2445
- November 17, Critical Care Committee**, 12:00pm – 1:00pm, 2A6
Chair: Dr. Campbell, ext. 4647
- November 18, Health Commission**, Location/Time: TBD
- November 19, Nutrition Committee**, 12:00pm – 1pm, Location: TBD
Chair: Ms. Schwartz, ext. 6286
- November 21, P & T Committee**, 8:00am – 9:30am, Café 3
(1 week early due to Thanksgiving Holiday)
Chair: Dr. Benowitz, ext. 8324
- November 24, Credentials Committee**, 12:00pm – 2:00pm,
Nuc Med Conference Room, Level G, Chair: Dr. Gelb, ext. 5754
- November 24, Ethics Committee**, 12:00pm – 1:00pm, Café #3
Chair: Dr. Jain, ext. 4987
- November Antibiotic Advisory Committee**, Date TBA, Café #3
Chair: Dr. Chambers, 206-5437
- November Pain Management Sub-committee**, Location/Time TBD

<i>October 2008</i>						
Sun	Mon	Tue	Wed	Thu	Fri	Sat
			1	2	3	4
5	6	7	8	9	10	11
12	13	14	15	16	17	18
19	20	21	22	23	24	25
26	27	28	29	30	31	

<i>November 2008</i>						
Sun	Mon	Tue	Wed	Thu	Fri	Sat
						1
2	3	4	5	6	7	8
9	10	11	12	13	14	15
16	17	18	19	20	21	22
23	24	25	26	27	28	29
30						

- **December 1, Formulary Review Committee**, 12:30pm – 2:00pm, Café #3
Chair: Dr. Simons, 682-1900
- **December 4, Administrative MEC**, 7:30am – 9:00am, 2A6
- **December 8, Clinical MEC**, 12:00pm – 2:00pm, 2A6
- **December 9, JCC**, 3pm – 5:30pm, 2A6
- **December 9, Operating Room Committee**, 7:00am – 8:00am, Café #1
Chair: Dr. Marks, ext. 8145
- **December 12, MUSS Committee**, 8:00am – 9:30am, Café #3
Chair: Dr. Dempsey, 502-2445
- **December 15, Critical Care Committee**, 12:00pm – 1:00pm, 2A6
Chair: Dr. Campbell, ext. 4647
- **December 16, Health Commission**, SFGH Carr Aud./Time: TBD
- **December 17, Nutrition Committee**, 12:00pm – 1:00pm, Location: TBD
Chair: Ms. Schwartz, ext. 6286
- **December 19, P & T Committee**, 8:00am – 9:30am, Café 3
(1 week early due to Christmas Holiday)
Chair: Dr. Benowitz, ext. 8324
- **December 22, Credentials Committee, meeting will be conducted via email**
Chair: Dr. Gelb, ext. 5754
- **December 22, Ethics Committee, Cancelled**
Chair: Dr. Jain, ext. 4987
- **December Antibiotic Advisory Committee**, Date TBA, Café #3
Chair: Dr. Chambers, 206-5437
- **December Pain Management Sub-committee**, Location/Time TBD
Chair: Dr. Drasner, ext. 8267
- **January 13, Operating Room Committee**
Chair: Dr. Marks, ext. 8145

<i>December 2008</i>						
Sun	Mon	Tue	Wed	Thu	Fri	Sat
	1	2	3	4	5	6
7	8	9	10	11	12	13
14	15	16	17	18	18	30
21	22	23	24	25	26	27
28	29	30	31			



January 2009

Calendar of Events

• **January 5, Formulary Review Committee**, 12:30:00pm-2:30pm, Café #3

Chair: Dr. Simons, 682-1900

• **January 8, Administrative MEC**, 7:30am-9:00am, 2A6

• **January 9, MUSS Committee**, 8:00am-9:30am, Café #3

Chair: Dr. Dempsey, 502-2445

• **January 12, Clinical MEC**, 12:00pm-2:00pm, 2A6

• **January 13, JCC**, 3pm-5:30pm, 2A6

• **January 13, Operating Room Committee**

Chair: Dr. Marks, ext. 8145

• **January 20, Health Commission**, SFGH Carr Aud./Time: TBD

• **January 21, Nutrition Committee**, 12:00pm – 1pm, Location: TBD

Chair: Ms. Schwartz, ext. 6286

• **January 23, P & T Committee**, 8:00am-9:30am, Café #3

Chair: Dr. Benowitz, ext. 8324

• **January 26, Critical Care Committee**, 12:00pm—1:00pm, 2A6

Chair: Dr. Campbell, ext. 4647

• **January 26, Credentials Committee**, 12:00pm-2:00pm,

Nuc Med Conference Room, Level G, Chair: Dr. Gelb, ext. 5754

• **January 26, Ethics Committee**, 12:00pm-1:00pm, Café #3

Chair: Dr. Jain, ext. 4987

• **January Antibiotic Advisory Committee**, Date TBA, Café #3

Chair: Dr. Chambers, 206-5437

• **January Pain Management Sub-committee**, 3:00pm-4pm, 4F36

Chair: Dr. Drasner, ext. 8267

January 2009

Sun	Mon	Tue	Wed	Thu	Fri	Sat
				1	2	3
4	5	6	7	8	9	10
11	12	13	14	15	16	17
18	19	20	21	22	23	24
25	26	27	28	29	30	31

