



# San Francisco Monthly STD Report

Data for January, 2010  
Report prepared February 24, 2010

Table 1. STDs among residents, January, 2010.

	2010		2009	
	month	YTD	month	YTD
Gonorrhea	171	171	188	188
Male rectal gonorrhea	53	53	42	42
Chlamydia	413	413	368	368
Male rectal chlamydia	71	71	80	80
Syphilis (adult total)	47	47	54	54
Primary & secondary	23	23	23	23
Early latent	17	17	22	22
Unknown latent	0	0	1	1
Late latent	7	7	8	8
Neurosyphilis	0	0	1	1
Congenital syphilis	0	0	0	0
PID	11	11	4	4

Table 3. HIV testing among City Clinic patients, January, 2010.

	2010		2009	
	month	YTD	month	YTD
Tests	333	333	429	429
Antibody positive	10	10	11	11
Acute HIV infection	1	1	4	4

Table 4. Methamphetamine-related visits to SFGH Emergency Departments, January, 2010. (Source: SAMHSA/OAS/DAWN)

	2010		2009	
	month	YTD	month	YTD
Male	61	61	34	34
Female	13	13	10	10

Note: All statistics are provisional until the annual report is released for the year. Morbidity is based on date of diagnosis. Totals for past months may change due to delays in reporting from labs and providers.

## Shortage of generic acyclovir

Due to manufacturing delays, there is currently a nationwide shortage of generic acyclovir. CDC and the FDA are working with the manufacturers to reestablish production. Selected alternative recommended regimens for the treatment of genital herpes are:

### First episode of genital herpes:

Valacyclovir 1.0 g po bid x 7-10 days  
Famciclovir 250 mg po tid x 7-10 days

### Recurrent genital herpes:

Valacyclovir 500 mg bid x 3 days  
Famciclovir 1.0 g bid x 1 day

### Daily suppressive treatment for recurrent genital herpes:

Valacyclovir 500 mg-1.0 g po qd  
Famciclovir 250 mg po bid

Updates from CDC and a link to the complete 2006 STD treatment guidelines may be found at:

<http://www.cdc.gov/std/treatment/2010/acyclovir-shortage.htm>. You can also visit our website: [www.sfcityclinic.org](http://www.sfcityclinic.org) for information on clinical consultation and other provider resources. SP

Provider STD Reporting: 415-487-5555, 415-431-4628 (fax)

[www.sfcityclinic.org](http://www.sfcityclinic.org)

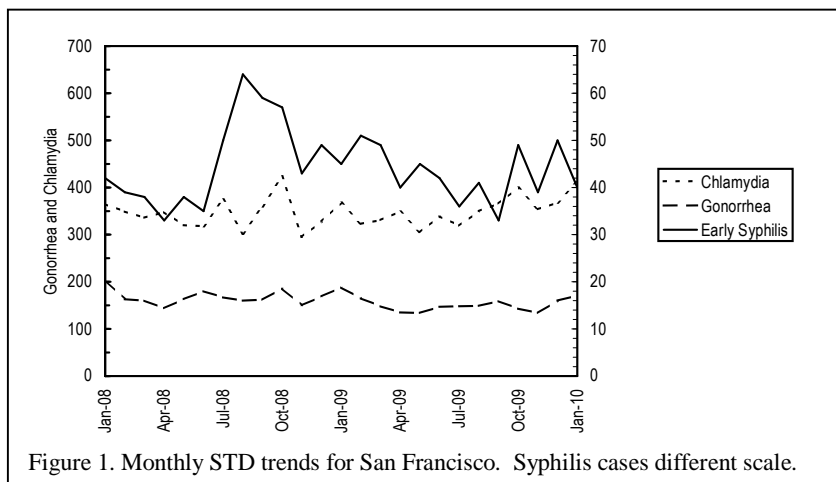


Table 2. Selected STD cases and rates for San Francisco by age and race/ethnicity, 2010 through January only. Rates equal cases per 100,000 residents per year based on 2000 Census.

	(All races)		Asian/PI		African American		Hispanic		White	
	cases	rate	cases	rate	cases	rate	cases	rate	cases	rate
<i>All ages</i>										
Chlamydia	413	638.1	49	233.0	91	1,704.4	58	635.6	111	393.0
Gonorrhea	171	264.2	11	52.3	24	449.5	23	252.1	86	304.5
Early syphilis	40	61.8	3	14.3	3	56.2	7	76.7	27	95.6
<i>Under 20 yrs</i>										
Chlamydia	66	1,541.7	4	220.3	33	6,014.3	12	1,299.8	6	649.0
Gonorrhea	11	257.0	1	55.1	6	1,093.5	1	108.3	2	216.3
Early syphilis	0	0.0	0	0.0	0	0.0	0	0.0	0	0.0

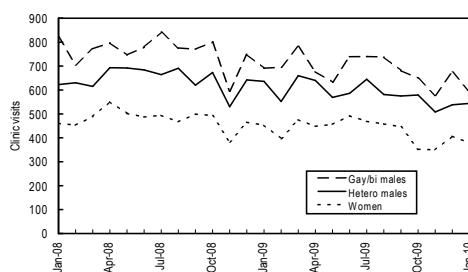


Figure 2. City Clinic visits by gender and orientation.

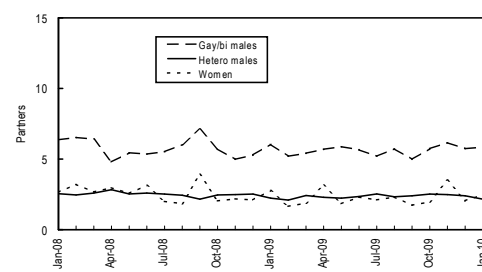


Figure 3. Average number of recent\* sex partners for City Clinic visits by gender and sexual orientation. \*Recall period is 3 months.