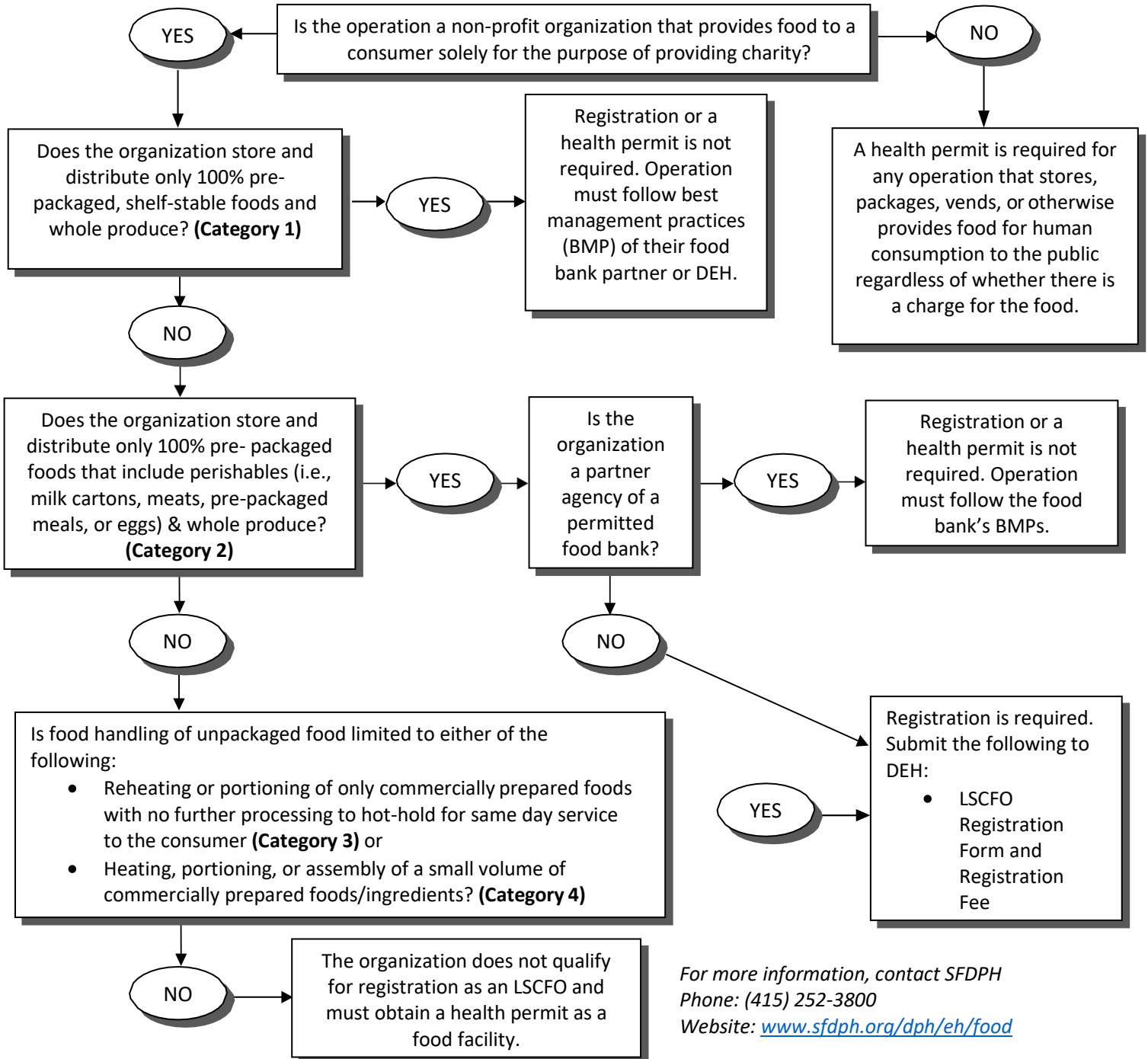




Limited Service Charitable Feeding Operation Flow Chart

This flow chart may be used as a guide to help organizations determine if their food service operation requires a health permit, qualifies them for a Limited Service Charitable Feeding Operation (LSCFO) registration under Assembly Bill 2178 or are exempt from either. If the organization has an existing Permit to Operate from the City and County of San Francisco Department of Public Health (SFDPH), registration as an LSCFO may not be required.



For more information, contact SFDPH
 Phone: (415) 252-3800
 Website: www.sfdph.org/dph/eh/food