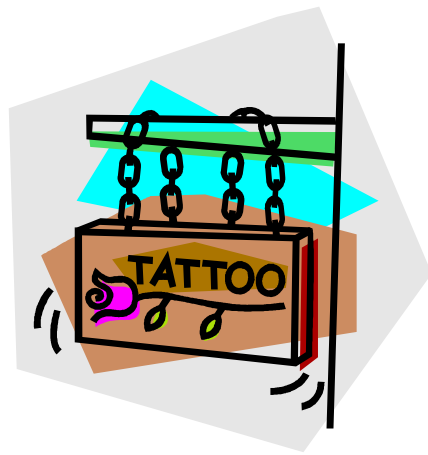


# BODY ART FACILITY PLAN CHECK GUIDELINES



## **GENERAL REVIEW**

1. When a tattoo, permanent cosmetic, branding or piercing business is constructed or remodeled, plans and specifications for such construction, remodel or alteration shall be submitted to the Plan Review Unit of the Local Enforcement Agency (LEA). The local building official may require plans as well. California Health & Safety Code (CHSC) § 119312(f)
  - A. Scaled drawing shall include a floor plan indicating the layout of procedure areas, cleaning and sterilization area, sink counters, storage areas, equipment and reception areas shall be submitted for review.
  - B. Plan submissions shall include a finish schedule for sanitary walls, floors and ceiling as approved by the LEA.
  - C. All construction is to be done in accordance with approved plans. Approval by the LEA and all applicable permits must be obtained before commencing work.

## **FACILITY CONSTRUCTION**

1. General Premises
  - A. Floors in the work areas and restroom shall be constructed of materials that are smooth, durable, impervious and easily cleanable. All floors surfaces must to be capable of being maintained in a sanitary manner. CHSC §119314(1)
  - B. The walls and ceilings in work areas shall be smooth, washable and nonabsorbent. CHSC §119314(1)
  - C. The premises shall be constructed and maintained to be free from vermin or rodent infestation and excessive dust, dirt and debris. CHSC §119314(2)
2. Procedure Areas
  - A. The procedure areas must be separated by a wall or ceiling-to-floor partition, from nail and hair activities. Body art can only be performed in the procedure area of the facility. CHSC §119314(b) 2
  - B. This area must be equipped with an accessible sink supplied with hot and cold running water, containerized liquid soap, and single-use paper towels that are dispensed from a wall-mounted, touchless dispenser. CHSC §119314(b) 3
  - C. The procedure area must be equipped with a light source that provides adequate light for procedures. CHSC §119314(b) 1
  - D. Lined waste containers shall be available in the procedure area. CHSC §119314(d)

E. A sealable, rigid and puncture proof 'sharps container' must be provided at each work station for the disposal of single-use sharp objects that come in contact with blood and/or body fluids. CHSC §119314(e)

3. Decontamination and sanitation areas:

A. Unless all equipment and supplies used in the course of a body art procedure are single-use, purchased as pre-packaged and pre-sterilized, the body art facility shall have a decontamination room or area for cleaning instruments and equipment. §119315(f)

1) The decontamination and sanitization area must be separated from the procedure area by a space of at least five feet or by a cleanable area. CHSC §119314(c) 1

2) This area must be equipped with a sink, hot and cold running water, liquid soap in a wall-mounted dispenser, and single-use paper towels dispensed from a wall-mounted, touchless dispenser that is readily accessible to the practitioner. CHSC §119314(c) 2

3) Lined waste containers shall be available in the decontamination area. CHSC §119314(d)

4) This area must be equipped with an approved steam autoclave. Chemical and dry heat sterilizers are not accepted. CHSC §119315(b)1

**OPERATION**

1. Documents, including the Infection Prevention and Control Plan (IPCP), or any record, file, paper, process, invoice, or receipt for the purpose of determining compliance shall be available and maintained on-site. CHSC §119313(a)(e)

A. The IPCP shall be reviewed prior to final approval to operate. CHSC §119312(b)1

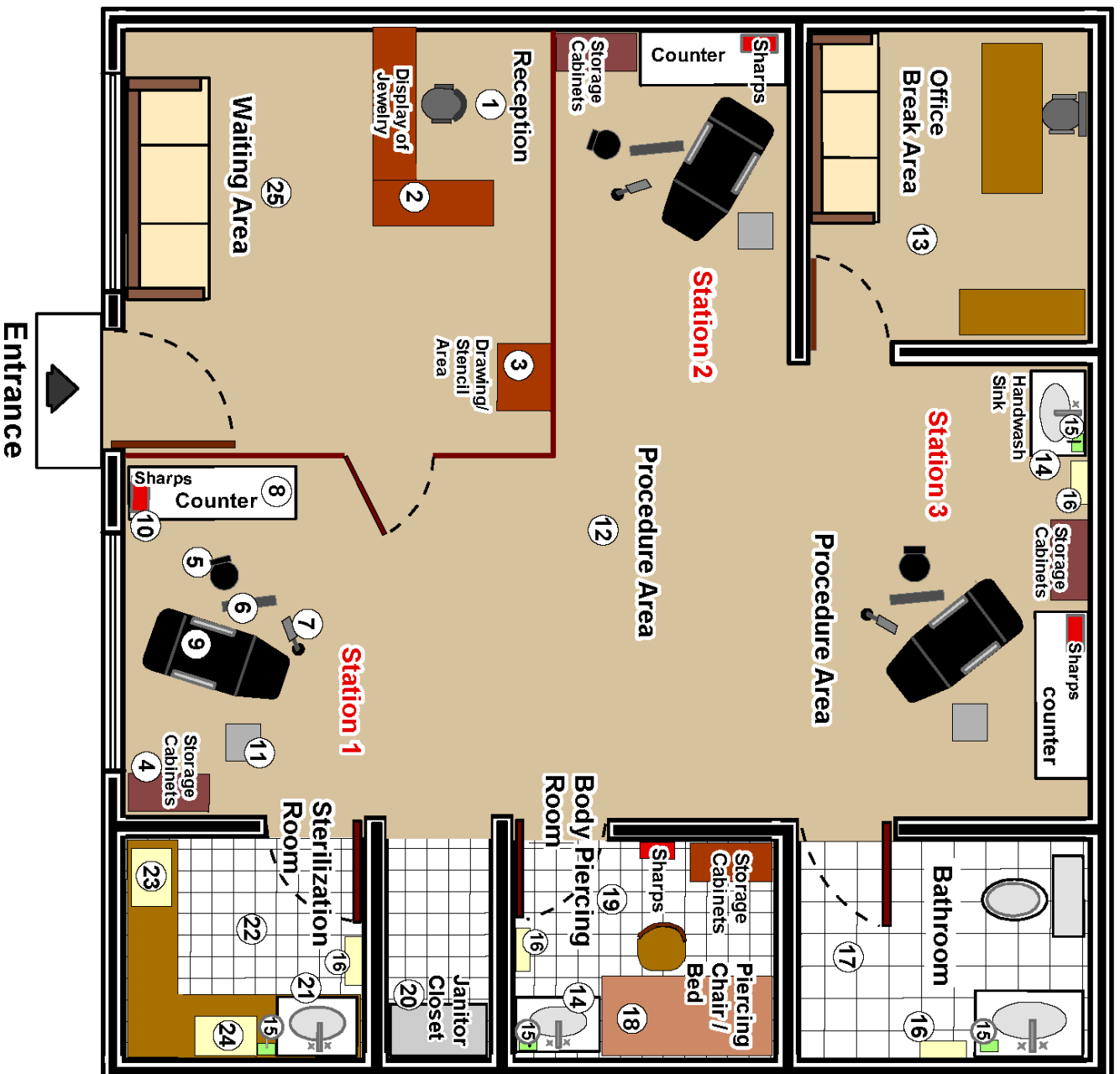
2. Pets or other animals shall not be permitted in the procedure area of the business, except for trained service dogs for disabled clients or practitioners. CHSC §119314(f)

3. No smoking, eating or drinking shall be permitted in the procedure or decontamination and cleaning area. CHSC §119309(i)

4. Clean and dry storage for clean instruments and sterilized instrument packs must be provided. This could be either labeled containers or a cabinet that is protected from dust and moisture. CHSC §119315(c)

5. Check with the local city zoning authority for other conditions or restrictions that may apply to the operation of a body arts facility.

# Example Site Plan



1	Reception Desk - not required to be shown
2	Display Case - not required to be shown
3	Drawing / Stencil Area - not required to be shown
4	Storage Cabinets - required to be shown
5	Chair- not required to be shown
6	Armrest - not required to be shown
7	Lamp - not required to be shown
8	Counter - required to be shown
9	Procedure Area Bed / Chair - not required to be shown
10	Sharps Containers - not required to be shown
11	Work Station Tray - not required to be shown
12	Procedure Area - required to be shown
13	Office / Break Room - not required to be shown
14	Handwash Sink - required to be shown
15	Liquid Soap - required to be shown
16	Single - Use Paper Towel Dispenser- required to be shown
17	Bathroom - required to be shown
18	Piercing Chair / Bed - not required to be shown
19	Body Piercing Room - required to be shown
20	Janitor Closet - not required to be shown
21	Bio Sink - required to be shown
22	Sterilization Room - required to be shown
23	Autoclave - required to be shown
24	Ultrasonic Machine - not required to be shown
25	Waiting Room - required to be shown