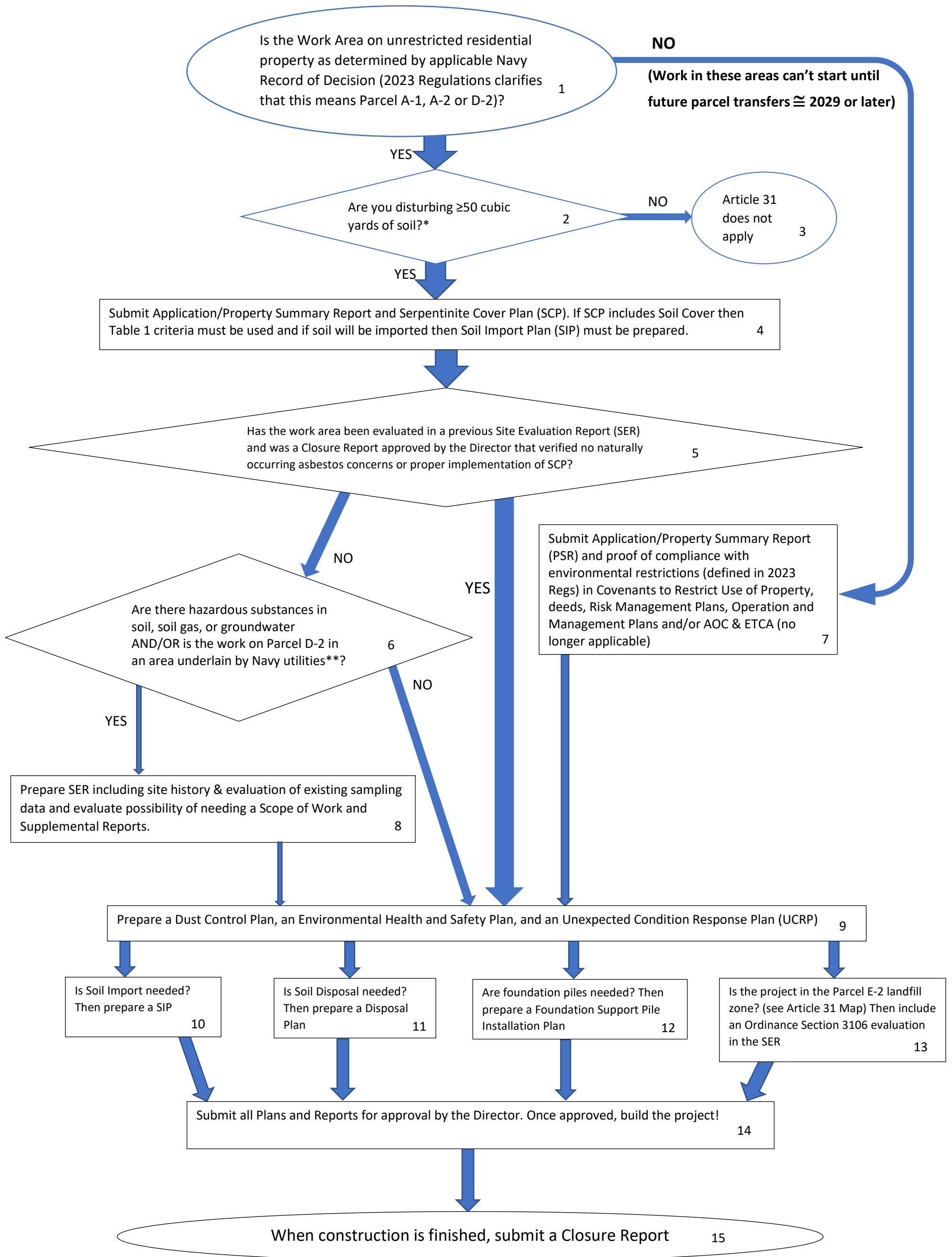


## Process Chart 2023 Version of Health Code Article 31 Regulations with existing 2010 Ordinance



\*OR are you constructing a well or (2023 Regs define) demolishing building(s) 101, 808, 813, or 821? (note: very few, if any, Applicants will have these tasks) Then follow "YES" path  
 \*\*SER requires assessment of adequate characterization and may require sampling and subsequent reports