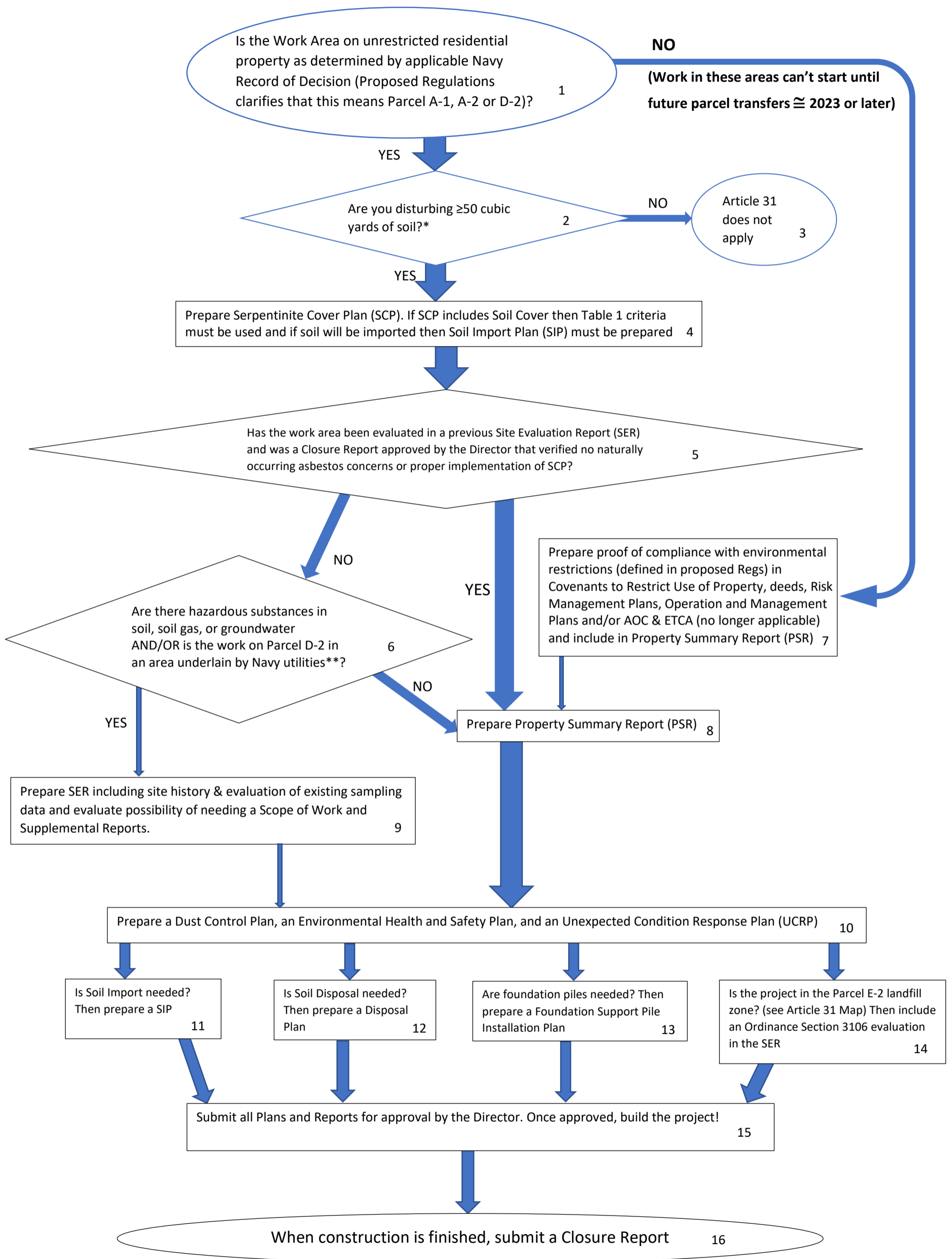


Process Chart

Proposed Version of Health Code Article 31 Regulations with existing 2010 Ordinance



*OR are you constructing a well or (Proposed Regs define) demolishing building(s) 101, 808, 813, or 821? (note: very few, if any, Applicants will have these tasks) Then follow "YES" path **SER requires assessment of adequate characterization and may require sampling and subsequent reports