



CHDP NEWS

San Francisco Child Health and Disability
Prevention (CHDP) Program
Volume VI Issue I, Spring 2013



In this issue:

[San Francisco County - Healthy Families Program Transition Update](#)

[Give Kids A Smile Day in San Francisco 2013](#)

[Documenting on the PM160 for Effective Care Coordination-Dental
SF Pediatric Growth Trends, 1995-2010, reporting from CHDP PM 160
data](#)

[San Francisco Lead Prevention Program](#)

[Utilize your City's Field Public Health Nurses \(PHNs\)](#)

[CHDP Provider Information Notices and Bulletins](#)

[Training and Patient Education Materials](#)

[San Francisco CHDP Staff Directory](#)

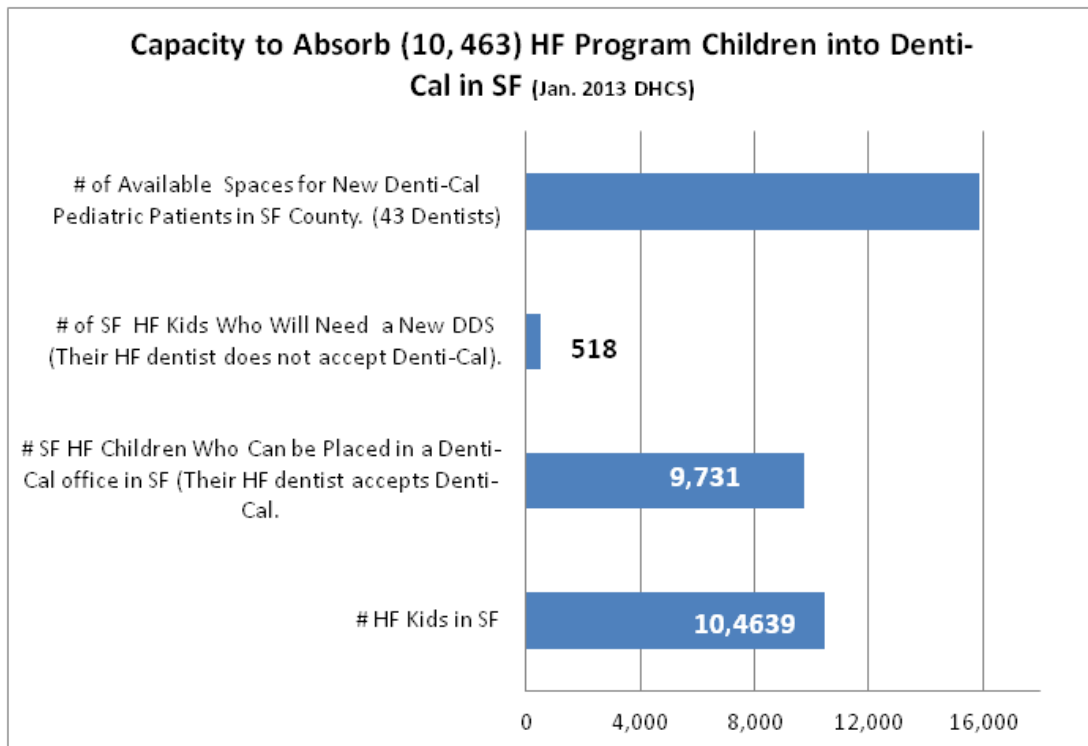


[San Francisco County - Healthy Families Program Transition Update](#)

As of January 2013, Healthy Families Program (HFP) is no longer accepting new enrollments. All currently enrolled HFP children will transition into Medi-Cal and automatically receive Denti-Cal coverage.

Many dentists in San Francisco accept Denti-Cal. Children living in SF with Denti-Cal may see any Denti-Cal dentist in the city and are not assigned to a specific dentist.

Use our online CHDP Dental Directory [English](#) / [Chinese](#) / [Spanish](#)



Please note: Based on monthly incomes some Medi-Cal children will now need to pay monthly premiums (\$13-\$39). For more information on Healthy Families Program transition to Medi-Cal: <http://www.dhcs.ca.gov/services/Pages/HealthyFamiliesTransition.aspx>

Undocumented children continue to be eligible for medical and dental coverage under the *Healthy Kids Program in San Francisco*.

Call SFHP for more information.
415-777-9992



[Give Kids a Smile Day in San Francisco 2013](#)

San Francisco's Department of Public Health, Child Health & Disability Prevention (CHDP) Program and Dental Hygiene Society partnered with multiple community groups to host the 4th annual *Give Kids a Smile Day* at SFGH WIC on Friday, February 1st.



Highlights from GKSD:

- 123 children under age 3 received free dental screenings, toothbrush cleanings and fluoride varnish application.
- 26% of the children had visible dental decay, 3 children had severe needs!

- Parents received oral health education and guidance in establishing a "dental home" for their child and will be followed up by CHDP AmeriCorps Interns.
- SFUSU nursing students were trained to screen for dental decay and apply fluoride varnish in babies and small children, a skill that will enhance their future professional work as medical providers.

*This experience impressed upon me the importance of ensuring my patients are including dental care in their total healthcare –
Student Nurse*

With over 41% of SFUSD kindergartners entering school with a history of dental decay this was a necessary community effort to bring attention to the importance of preventing the disease and helping children find a dental home.

Documenting on the PM160 for Effective Care Coordination - Dental

"Last fall, we got a call about a 19 y.o. patient with severe dental decay who had aged out of his HF dental insurance. Because his PM 160 did not document dental decay we were unable to enroll him into the CHIP 'dental safety net' and could not cover the cost of his dental care."

- SF CHDP Health Worker

There are several reasons we at CHDP stress the importance of documenting dental problems in the Comments Section of the PM160 Reporting Form. We *care coordinate* many of your patients who are high risk, vulnerable children where family dynamics places oral health at a low priority and navigating the system is a barrier to care.

If you *check* the Routine Dental Referral Box:

We can call the parents to help link them to a *Dental Home* - for regular preventive care and reinforce your messages of overall health.

But ~ Dental Problems must be documented in the Comments Section, in order to:

1. **Direct the parents to the right dental clinic for their child’s needs;** Does the child need hospital dentistry (UCSF), office sedation or a family dentist? Knowing the severity of decay helps us get them into proper care faster and reinforces the importance of treatment with families.
2. **Enroll the child in our “safety net” CHIP Dental Program.** CHDP children are covered in SF for one year, even if they “fall off” their insurance, BUT only IF problems are noted in the Comments Section of the PM160 form

Noting dental decay in the Comments Section of the PM 160 forms ensures this **“Dental Safety Net”** is available to all CHDP children in need.

Dental Referral Tip # 26

Advise Parents: **Cancel in Advance – At least 2 Business days, if they cannot keep a dental appointment!**

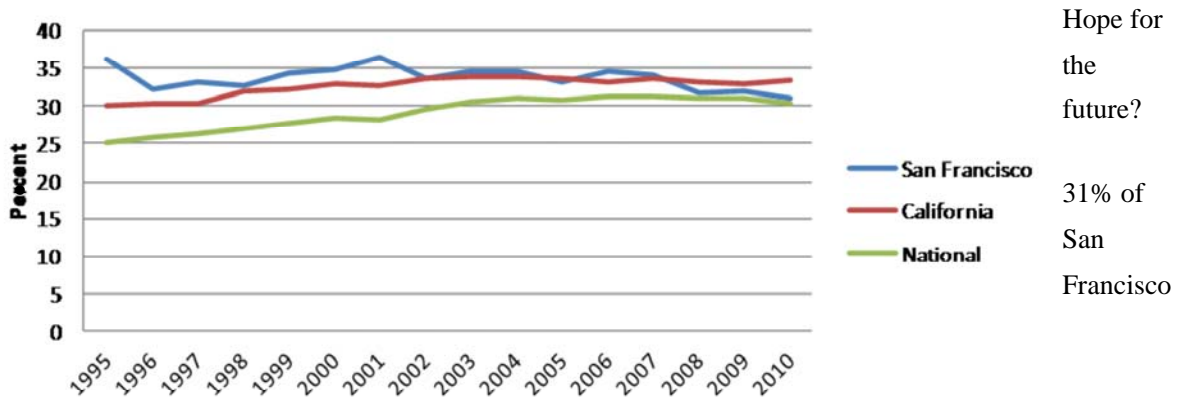
Many high use clinics, including UCSF, and Children’s Choice, have a policy of **“2 No-Shows and You’re OUT”.**

(Otherwise, the clinic ends up with openings in their schedule, which cannot be filled at the last minute, and miss treating kids who desperately need the treatment.)

SF Pediatric Growth Trends, 1995-2010,
reporting from CHDP PM 160 data

PedNSS data is taken from CHDP PM160. Data collected from PM160s is also used by the state to allocate local funding for a variety of children's programs.

PedNSS: Prevalence in Overweight/Obesity in Children ages 2-<5 years of age, 1995-2010

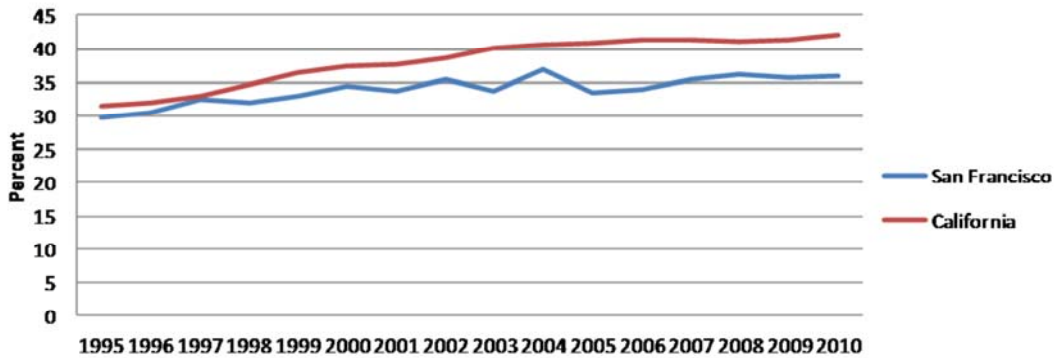


Hope for the future?
31% of San Francisco

preschoolers are overweight or obese.

- Prevalence in the under 5 age group has trended down since 2008.

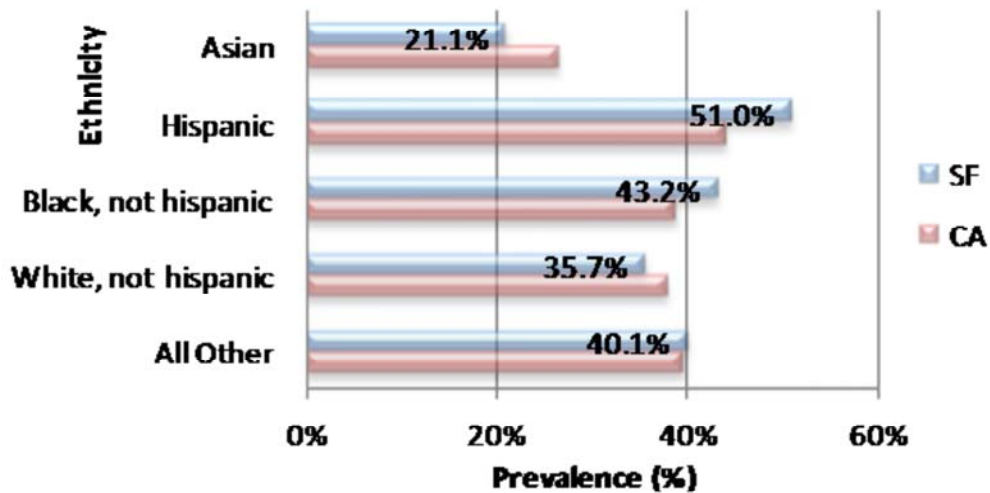
PedNSS: Prevalence in Overweight/Obesity in Children >5 years of age, 1995-2010



Effect of school and neighborhood?

- SF overweight/obesity prevalence in school-age children (6-19) rose 6.2 percentage points over the past 15 years.
- The prevalence of obesity increases with age between age 5 and age 11 for all race/ethnicity in San Francisco
- The prevalence of obesity falls from age 15 to age 19 for Asian and White youth, but continues to increase for Black and Hispanic youth.

2010 Combined Overweight/Obesity by Ethnicity in SF vs. CA children > 5 years of age



In San Francisco,

- if you are a Hispanic or a Black/African American child, you have a higher likelihood of being overweight or obese than your non-San Francisco counterparts in California.
- if you are an Asian or a White child, you have a lower likelihood of being overweight or obese than your non-San Francisco counterparts in California.

[The San Francisco Lead Prevention Program](#)

The San Francisco Lead Prevention Program is launching a new campaign:
“Stop Lead Before it Stops Your Child”

With this campaign come new services and recommendations:

1. The program offers a Free home inspection and Free health education on lead exposure and prevention to any family with a child under 21 years of age.
2. The program is encouraging pregnant women or parents of newborns to call for a free home inspection.
3. If a child has pica behavior, please make sure to test their blood lead levels.
4. If a child has anemia or iron-deficiency, please make sure to test their blood lead levels.



The Lead Prevention Program can come to your office to provide an in-service to your staff, give ideas on how to talk to your patients about lead prevention and offer free educational materials.

And Remember: ALWAYS screen for lead at 12 and 24 months (or at 25-72 months if never tested previously)

- **Continue to provide oral or written anticipatory guidance on risk of lead exposure at each periodic health assessment**

Contact Margarita Herrera, PHN for more information or to make a referral: 415-252-3897

Utilize your City's Field Public Health Nurses (PHNs)

For your high risk families needing additional support, consider making a referral to a Maternal Child and Adolescent Health (MCAH) field Public Health Nurse:

The MCAH Field PHNs conduct visits to families in their homes to:

- Provide pediatric and newborn assessments
- Teach positive health practices
- Offer parenting support and education
- Identify home environmental concerns (i.e. lead, mold) and advocate on a client's behalf for healthier living conditions
- Assist families in accessing, coordinating, and complying with appropriate health and community services
- Conduct home assessments and safety evaluations
- Provide support for families who have children with special needs
- Conduct assessments for communicable diseases and immunization status

Introducing the Nurse Family Partnership Program

Nurse Family Partnership (NFP) is a new program in SF, although it has been established in the US for over 30 years. The program targets **low- income first- time mothers**, enrolling them in the program no later than 28 weeks gestation pregnancy. They are visited by a PHN **throughout pregnancy and the first two years of their child's life**. NFP is an evidence-based program whose main goals are to:

- Improve pregnancy outcomes through practice of good health-related behaviors
- Improve child health and development
- Improve economic self-sufficiency

**To make a referral to either program, call the Women and Children Resource line:
1-800-300-9950**

CHDP Provider Information

<http://www.dhcs.ca.gov/services/chdp/Pages/CHDPPLPIN.aspx>

PIN # 12-02. 06-27-12. Revised Recommendation for Quadrivalent Human Papillomavirus Vaccine CHDP Code 76 for Males and Females.

PIN # 12-03. 06-27-12. CHDP Health Assessment Guidelines (HAG) Revision: Section 56, Injury Prevention and Anticipatory Guidance.

PIN # 12-04. 06-27-12. Administration of a Single Supplemental Dose of Pneumococcal Conjugate Vaccine 13 Valent (PCV13) for Children Who Have Received a Full Series of PCV7.

PIN # 12-05. 06-11-12. Recommended Booster Dose of Meningococcal Conjugate Vaccine (MCV4), CHDP Code 69.

NO Provider Information Notices in 2013 yet!

CHDP Bulletins

Available online at <http://www.medi-cal.ca.gov>. Click on Provider Bulletins, scroll to bottom. Click on CHDP Gateway to Health Coverage under Specialty Programs.

Bulletin # 97 – November 2012

1. Two HCACs Added to Provide-Preventable Conditions
2. Clinical Laboratory and Laboratory Services Reimbursement Rates
3. Provider Manual Revisions: aid code (19)

Bulletin # 98 – December 2012

- 1. Medi-Cal Announces Launch of the Medi-Cal Subscription Service**
- 2. Healthy Families Program Services Transitioning to Medi-Cal in 2013**
- 3. Healthy Families Transition Adds Seven Aid Codes**
- 4. Transaction Services Update: Warning Banner on Login**
- 5. Tracking Medical Claims Using SCPI**
- 6. 2013 CPT-4 and HCPCS Codes Not Yet Adopted**
- 7. Over-the-Counter Eye Drops and Nasal Sprays: Drug Safety Communication**

Bulletin # 99 – January 2013

- 1. Originating Depository Financial Institution Change**
- 2. Medical Exemption Requests Processed Incorrectly**
- 3. Medi-Cal Officially Goes Live with the Medi-Cal Subscription Service**

Bulletin # 100 – February 2013

- 1. Healthy Families Program References Revised in CHDP Manual**
- 2. POS Device User Guide: CHDP Section Updated**
- 3. CHDP User Guide Updated for Healthy Families Transition**
- 4. Medical Exemption Requests Processed Incorrectly**

Trainings and Patient Education Materials

CHDP Training

Scheduled and conducted at your clinic by licensed CHDP staff:

- PM 160 Training
- Oral Health Training
- Guidelines for Accurate Weighing and Measuring
- Assessing Child Growth Using the Body Mass Index (BMI)-for-Age Growth Charts
- Counseling the Overweight Child

Contact your CHDP provider-relations nurse consultant, dental hygienist or nutritionist at the [email or phone number](#) listed at the end of this newsletter.

Oral Health Patient Brochures and Professional Resources

Color brochures can be ordered free from the National Maternal and Child Health Oral Resource Center at Georgetown University. Online pdf files also available.

Order directly at ~

<http://www.mchoralhealth.org/order/index.html>

or contact Margaret Fisher at (415) 575-5719

or margaret.fisher@sfdph.org.



CHDP Oral Health Training

- “In-office” Early Dental Assessment & Referral training and support.
- Fluoride varnish (worth \$150) will be provided as part of the training at no charge.
- SF Health Plan reimburses for fluoride varnish applications. \$15/application for SFHP children. Details on the last page of the [SFHP May 2012 Provider Update](#)

Contact Margaret Fisher at (415) 575-5719 or margaret.fisher@sfdph.org

Summer 2012 CHDP Dental Directory

Available online in

[English](#), [Chinese](#), [Spanish](#)



New CHDP Dental Training On-line
The California CHDP Dental Training on Oral Health Assessment and Referral is now online at

<http://www.dhcs.ca.gov/services/chdp/Pages/CHDPDentalTraining.aspx>.

Also available at this website are patient brochures and provider resources such as the [CHDP-CCS Orthodontic and Craniofacial Referral Guideline](#).

CHDP Staff Directory

CHDP Main Line:

Marylou Remo

415-575-571

marylou.remo@sfdph.org

CHDP Deputy Director:

Greg Cutcher, MS RN PHN

415-575-5712

greg.cutcher@sfdph.org

Nurse Manager:

Dorothy C Quan, RN, PHN, MPA

415-575-5712

dorothy.quan@sfdph.org

Medical Director:

C. Jeanne Lee, MD MPH

415-575-5712

jeanne.lee@sfdph.org

Billing Inquiry & PM160 orders:

Tina Panziera

415-575-5720

tina.panziera@sfdph.org

Provider Relations:

Public Health Nurses:

Susan Rudolph, RN, PHN

415-575-5707

susan.rudolph@sfdph.org

Kathy Shumaker, RN, PHN

415-575-5736

kathy.shumaker@sfdph.org

Dental Hygienist:

Margaret Fisher, RDHAP, BS
415-575-5719
margaret.fisher@sfdph.org

Nutritionist:
Rebekah Buzolich, RD, MPH
415-575-5731
rebekah.buzolich@sfdph.org



**San Francisco Department of Public Health
CHDP Program**

30 Van Ness Avenue, Ste 210

San Francisco, CA 94102

Phone: (415) 575-5712

Fax: (415) 558-5905

Toll-Free Line:

1-800-300-9950

<http://www.dhcs.ca.gov/services/chdp/>

Copyright © 2013 San Francisco Department of Public Health, All rights reserved.

You are receiving this email because your clinic is a CHDP provider.