



San Francisco Monthly STD Report

Data for March, 2020
Report prepared May 18, 2020

Table 1. STDs among residents, March, 2020. Female syphilis cases include patients assigned as female at birth.

	2020		2019	
	month	YTD	month	YTD
Gonorrhea	366	1,371	431	1,341
Male rectal gonorrhea	119	398	114	360
Chlamydia	484	2,097	778	2,380
Male rectal chlamydia	137	601	204	559
Syphilis (adult total)	116	438	153	461
Primary & secondary	37	124	51	140
Early latent	53	223	74	243
Unknown latent	12	36	7	16
Late latent	14	55	21	62
Neurosyphilis	1	3	3	10
Congenital syphilis	0	0	0	1
Female syphilis	15	52	7	32

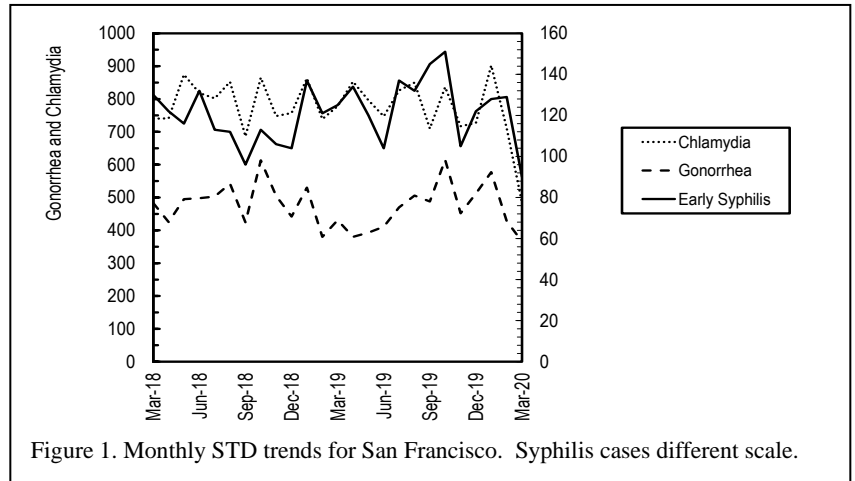


Figure 1. Monthly STD trends for San Francisco. Syphilis cases different scale.

Table 2. Selected STD cases and rates for San Francisco by age and race/ethnicity, 2020 through March only. Rates equal cases per 100,000 residents per year based on 2010 US Census Data.

	(All races)		Asian/PI		African American		Hispanic		White	
	cases	rate	cases	rate	cases	rate	cases	rate	cases	rate
<i>All ages</i>										
Chlamydia	2,097	1,041.7	258	388.4	202	1,727.2	294	965.7	630	746.8
Gonorrhea	1,371	681.0	133	200.2	159	1,359.5	234	768.6	497	589.1
Early syphilis	347	172.4	37	55.7	50	427.5	83	272.6	136	161.2
<i>Under 20 yrs</i>										
Chlamydia	178	1,280.7	21	379.3	46	3,912.4	31	980.1	14	456.7
Gonorrhea	42	302.2	4	72.3	15	1,275.8	6	189.7	3	97.9
Early syphilis	1	7.2	0	0.0	0	0.0	0	0.0	0	0.0

Table 3. HIV testing among City Clinic patients, March, 2020.

	2020		2019	
	month	YTD	month	YTD
Tests	214	996	502	1,344
Antibody positive	5	11	5	9
Acute HIV infection	0	0	1	2

Note: All statistics are provisional until the annual report is released for the year. Morbidity is based on date of diagnosis. Totals for past months may change due to delays in reporting from labs and providers.

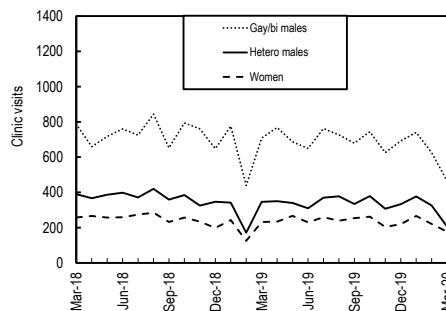


Figure 2. City Clinic visits by gender and orientation.

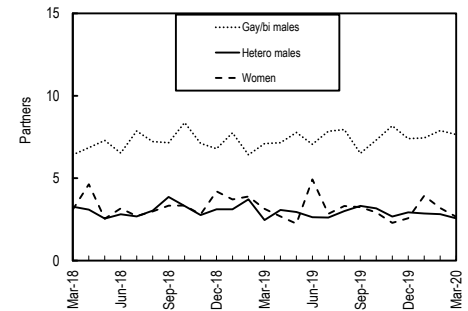


Figure 3. Average number of recent* sex partners for City Clinic visits by gender and sexual orientation. *Recall period is 3 months.

Syphilis continues to increase among women – please screen and ensure treatment of your patients and their partners.

We encourage all providers to screen their patients according to citywide STD screening guidelines.

http://sfccityclinic.org/providers/ScreeningandSurveillance_CitywideSTDscreeningguidance_0619.pdf

The San Francisco Department of Public Health (SFPDH) **LINCS** team (comprised of disease intervention specialists) ensures patients with syphilis are treated and confidentially provides prevention treatment and tests to their sex partners.

- ❖ **LINCS** partner services are voluntary and offered by skilled and client-centered SFPDH staff.
- ❖ Please encourage patients to work with us at SFPDH to prevent syphilis and help them stay healthy.
- ❖ To contact **LINCS**, call 415-487-5531 and fax to 415-431-4628 a confidential morbidity report (<https://www.sfccityclinic.org/providers/reporting>).
- ❖ Visit our website for more information: <https://www.sfccityclinic.org/providers>

Novel Coronavirus (COVID-19)

Although COVID-19 has not yet been found in **semen** or vaginal fluid, exposure to COVID-19 can occur during sexual activities through direct contact and potential exchange of saliva, mucus and feces. **All San Franciscans have been asked to participate in the 'shelter in place' and to avoid close contact** - including sex - with anyone outside your household. To minimize exposure to COVID-19 if you do have sex with others, have as few partners as possible and avoid group sex. If you usually meet your sex partners online or make a living by having sex, consider taking a break from in-person dates. Video dates, sexting or chat rooms may be options for you.

SFPDH COVID-19 information for providers and patients are available online: <https://www.sfdph.org/dph/alerts/coronavirus.asp>

- **For SF Health Care Providers**
SFPDH-developed guidance and materials can be found here:
<https://www.sfdcp.org/infectious-diseases-a-to-z/coronavirus-2019-novel-coronavirus/coronavirus-2019-information-for-healthcare-providers/>
- **For the SF Public**
<https://www.sfdcp.org/infectious-diseases-a-to-z/coronavirus-2019-novel-coronavirus/>
<http://www.sfccityclinic.org/covid-19-faq>

Provider STD Reporting: 415-487-5555, 415-431-4628 (fax)

www.sfccityclinic.org