

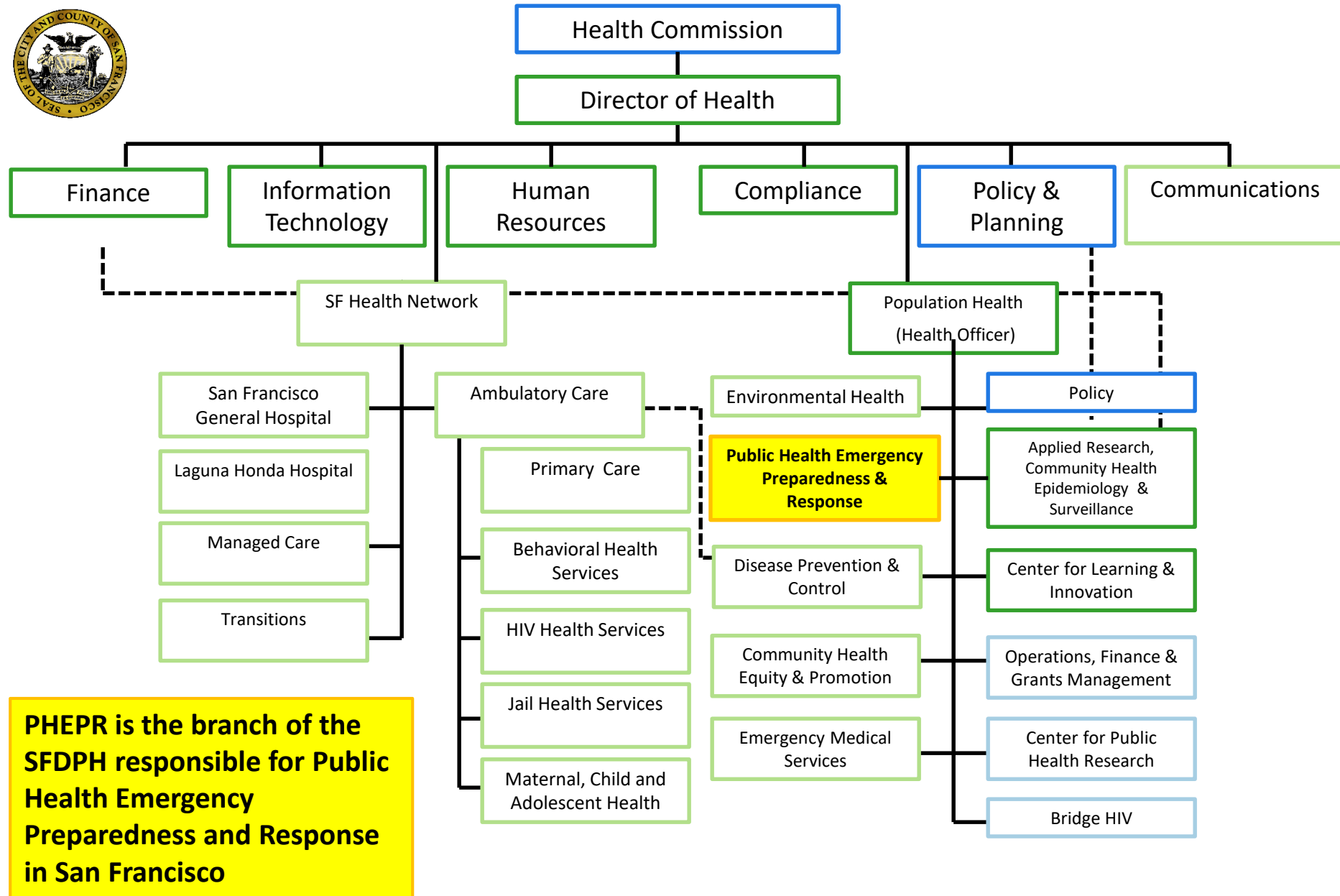
San Francisco Public Health Emergency Preparedness and Response Annual Update



Dr. Jan Gurley, M.D.

Director, Public Health Emergency Preparedness and Response

June 19, 2019



Presentation Overview

How PHEPR Works with the City's Emergency Activities

Balance of Proactive and Reactive Work

Proactive Preparedness

- Community

- Healthcare Partners

- Workforce

Reactive Response

- Communicable Diseases

- Cyber/IT Events

- Climate Change Extreme Weather



Where PHEPR fits in SF Emergency Management

San Francisco/DEM EOC

DPH/PHEPR DOC

SFPD
SFFD
PUC
MTA

Hospital Preparedness
UCSFs, Chinese, Kaiser, CPMPs, St. Francis, St. Mary's, VAMC

Healthcare Coalition
Clinics, Methadone, Dialysis, SNFs, privates

EMSA

Behavioral Health Services

Ambulatory Care Clinics



Balancing Proactive and Reactive Work

Public Health Emergency Preparedness:

- + Extensive exercise partnerships**
- + Solid communication and messaging**
- + Strong Healthcare Coalition**

- Working to improve community engagement**
- Moving toward more DPH involvement/training**
- Numerous activations impact planning**

Public Health Emergency Response:

- + Strong response activity**
- + Solid experience in a wide range of areas**
- + Fosters city-wide and team connections**

- Need to expand response experience within DPH**
- Small team carrying large number of responses**
- Goal of uniting planning-response cycle**

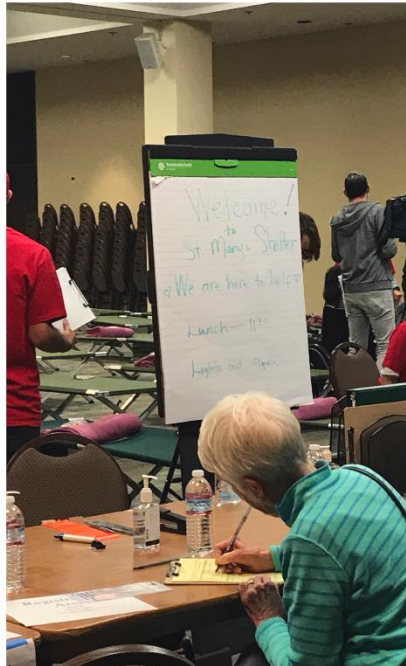
Preparing: Medical Needs in Disaster Shelters Exercise



9.6.2018

**YELLOW
COMMAND**

ST. MARY'S
CATHEDRAL



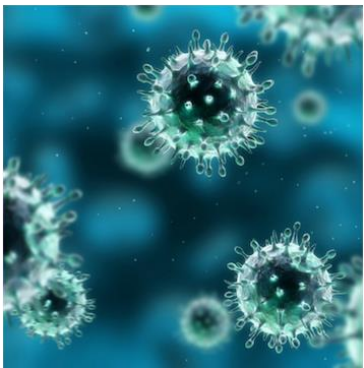
- Core Capabilities Tested
 - ESF 6, Mass Care, Logistics and Supply Chain Management, Situational Assessment, Public Information & Warning

- Building Partnerships
 - Local Agencies – DEM, HSA, DPH
 - Regional - BAUASI
 - State Agencies – Cal OES, Cal – EMSA
 - NGOs – ARC, Salvation Army

Preparing: Statewide Medical and Health Exercises



- Scenario: Emerging Infectious Disease **Influenza Season**
- Tabletop on October 15th, 2018
 - Over 75 participants
 - Hospitals, SNFs, EMSA, PHEPR, CDPU, and CDPH
- Functional on November 15th, 2018
 - Resource scarcity/PPE, communication
 - Building Partnerships:
 - LHH, UCSF, Chinese, CPMC Davies, Kaiser, St. Francis, St. Mary's, ZSFGH
- City-wide Medical Surge Planning



Preparing: Community Training and Information

Psychological First Aid Training

- 11 trainings for community groups and NERT
- 307 participants

Continuity of Operations (COOP) Training

- 18 Methadone provider participants

Critical Partners Lists and Preparation

- Developed and maintained list of 38 organizations
- Maintained a list of 28 housing management companies
- Trained 10 community members to provide extreme heat, sheltering-in-place and flooding/storms training courses.

Working with the Media

- Weather Events Media Workshop
 - Over 15 Bay Area Media TV/radio/electronic attended



Preparing: Healthcare Coalition

- Launch of “*SF Healthcare Preparedness Pulse*” Quarterly Bulletin
- **National Model Program Award from National Association of City and County Health Officers for Methadone Clinic Disaster Planning Workgroup**



Picture: 69 reps at FEMA Health Sector Emergency Preparedness Training in January 2018.

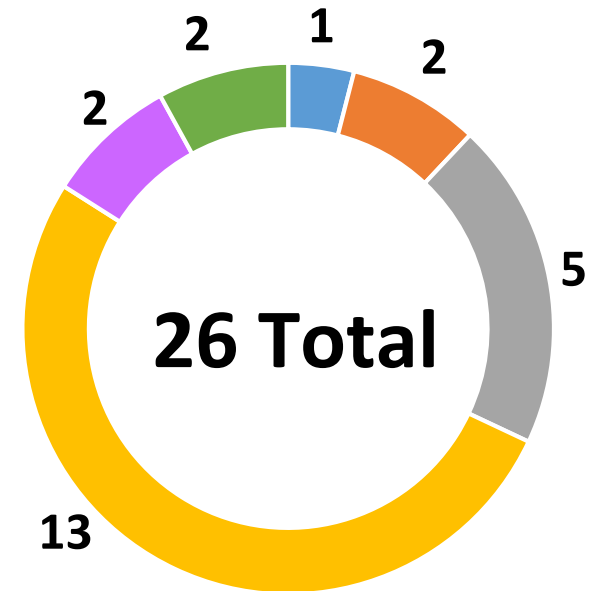
Preparing: DPH Workforce Development and Exercises

Delivered 18 trainings to 146 participants



Total number of exercises 26

- 6 Discussion Exercises
- 17 Operations-based Exercises



- Seminar
- Workshop
- Tabletops
- Drills
- Functional
- Full scale

Responding: 2018 Emergency Responses

4 DPH Activations

3 EOC Activations

5 IMT Activations

12 Total

Total: 87 days of activation

Average: 7.25 days per activation

Responding: 2019 Emergency Responses

6 DPH Activations

6 EOC Activations

3 IMT Activations

15 Total (so far...)

Responding: Healthcare Impact Events

2018-12 Activations
(87 days)

UC Labor Action (3 days)

UC Labor Action (3 days)

Kaiser Labor Action (3 days)

Multiple Bitcoin Bomb Threats
(1 day)

DPH Chiller IT Shutdown (1 day)



Responding: Communicable Diseases

2018-12 Activations

(87 days)



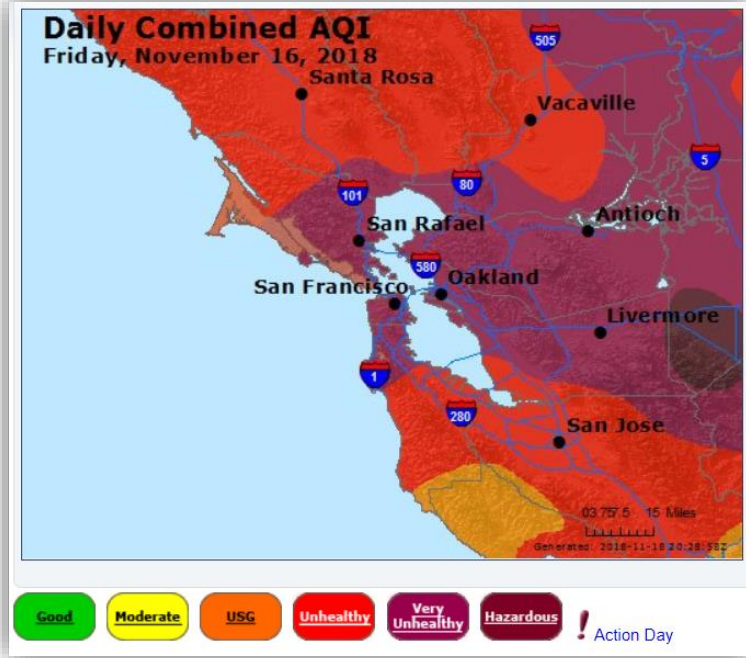
TB Contact Investigation (16 days of operations across 60 days of planning)



Hepatitis A Prevention (5 months in 2017, plus 30 days in January 2018)

Responding: Climate Change Extreme Weather

2018-12 Activations
(87 days)



Butte Fire/AQI
(14 days)



Extreme Heat (4 days)



2019-2020 Events?

- Thank you to the PHEPR team members:

Gabby Aldern

Teri Dowling

Kris Leonadakis-Watts

Stephanie Murti

Amy Ovadia

Tiffany Rivera

Kenpou Saelee

Michael Schmidt

Cimma Sefat

Melissa Ta

Douglas Walsh



10/31/13

San Francisco Department of Public Health
 DEPARTMENTAL OPERATIONS CENTER (DOC)
 - DOC Commander -

Policy Group

Command Staff
 Information, Safety, Media, Liaison,
 Field, Continuity of Operations
 Officers

