

San
Francisco
Mental Health
Services Act

MHSA

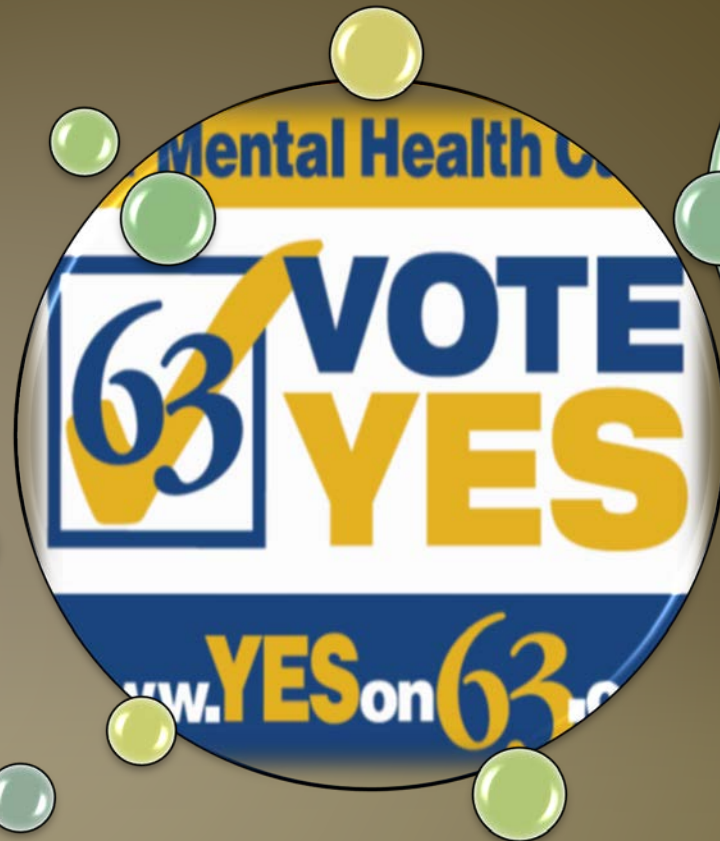
INTEGRATED

PLAN

2014-2017



Enacted
into law
in 2005



1% tax on
income
over \$1
million

Designed to
transform
the mental
health
system

*“As my life got bigger,
my illness got smaller”*

- MHSA Program Participant

Guiding Principles

Consumer and Family Involvement

Community Collaboration

Cultural Competence

Integrated Service Delivery

Wellness and Recovery Model



A single plan that brings together all MHSA components

Guided by State regs, MHSA principles and Community Planning Process (CPP)

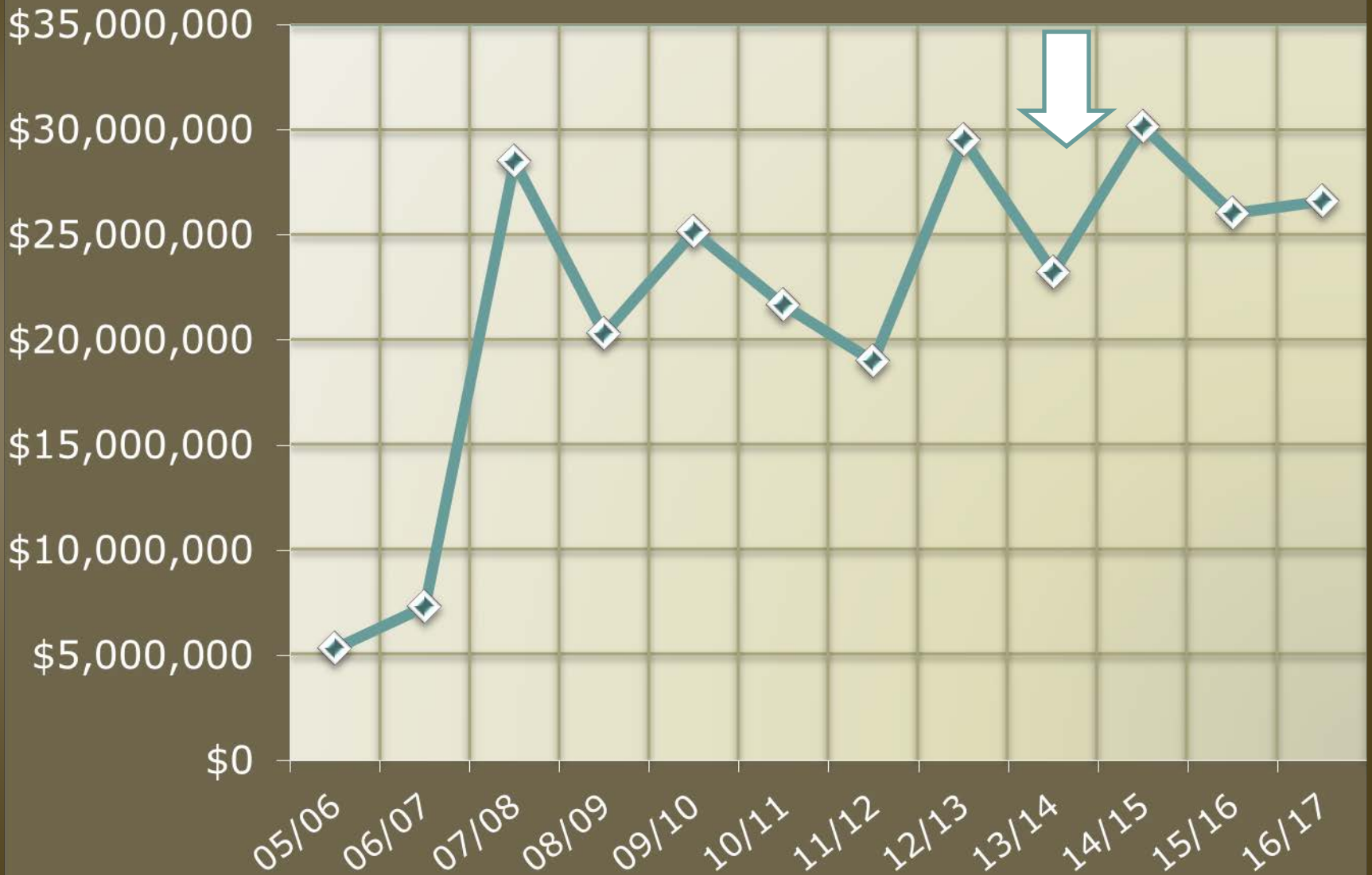
**MHSA
Integrated
Plan**

Identifies new investments planned for fiscal year 2014-15 and beyond

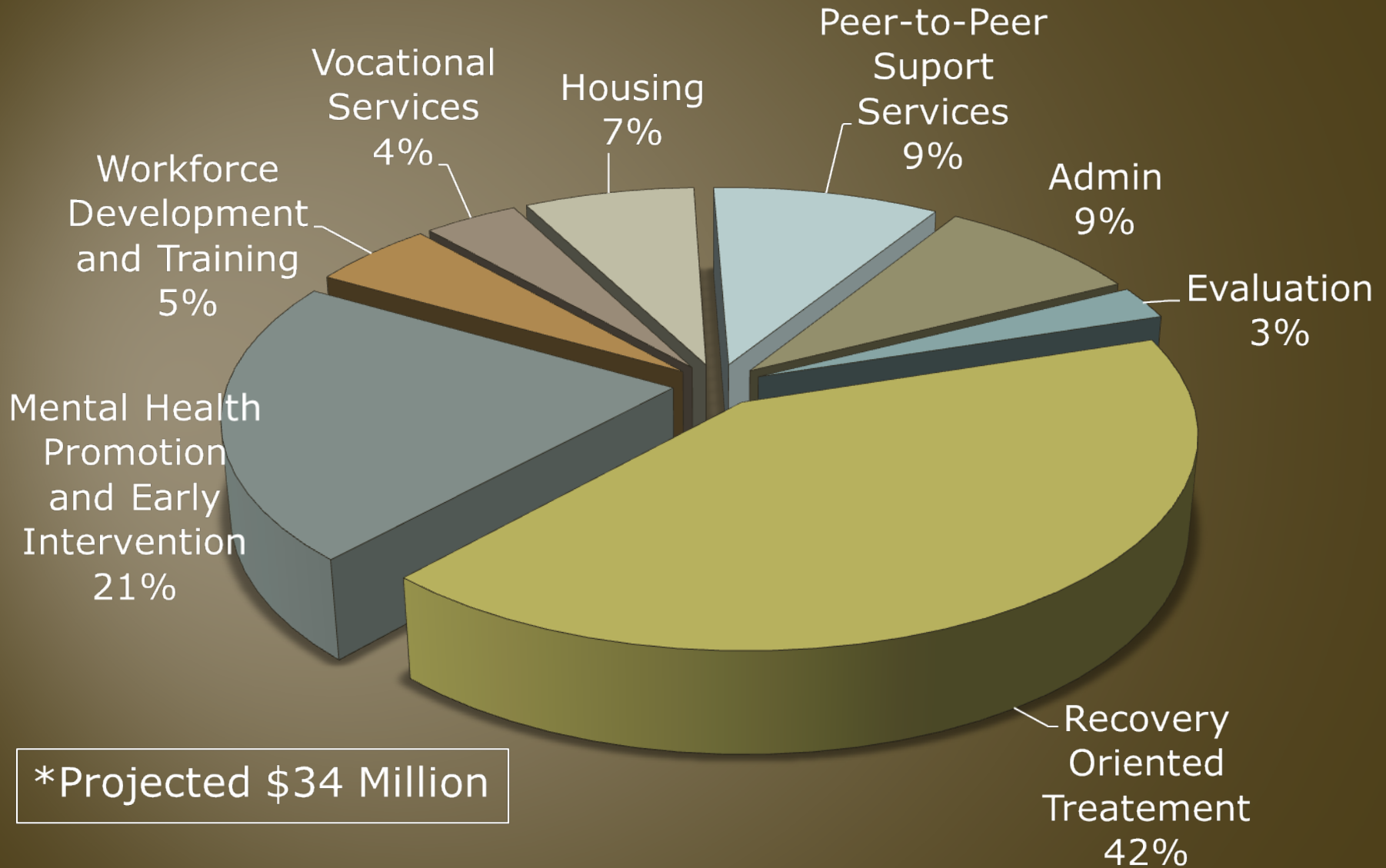
Describes service categories, programs, target populations, cost per client and outcomes

San Francisco MHSR Revenue by FY

*13/14 and beyond are estimated



MHSA 14/15 Budget* by Service Category



Community Program Planning

Guided by:

• **MHSA/State Regulations**

• **Previous SF MHSA Planning Efforts**

• **Evaluation, Data & Monitoring**

MHSA Communication Strategies

- Make information available on MHSA website
- Provide regular updates to stakeholders
- Share implementation highlights in monthly CBHS Director's Report

MHSA Advisory Committee

- Identify priorities
- Monitor implementation
- Provide feedback

RFQ

Program Planning and RFP Selection Committees

- Assess needs and develop service models
- Review program proposals and interview applicants
- Select most qualified providers

Program Implementation

- Collaborate with participants to establish goals
- Promote peer and family employment
- Promote the engagement of peers in program governance

Evaluation

- Promote peer and family engagement in evaluation efforts
- Collect data on participant satisfaction

MHSA Service Categories



#1: Recovery-Oriented Treatment Services

#2: Mental Health Promotion & Early Intervention Services

#3: Peer-to-Peer Support Services

#4: Vocational Services

#5: MHSA Housing Program

#6: Behavioral Health Workforce Development

#7: Capital Facilities/Information Technology

* All categories include programs funded with Innovation (INN) funding.



Behavioral Health Access Center (BHAC)

Full Service Partnership (FSP) Programs

- 0-5 FSP
- Expand TAY and Adult FSPs

Recovery Oriented Treatment Services

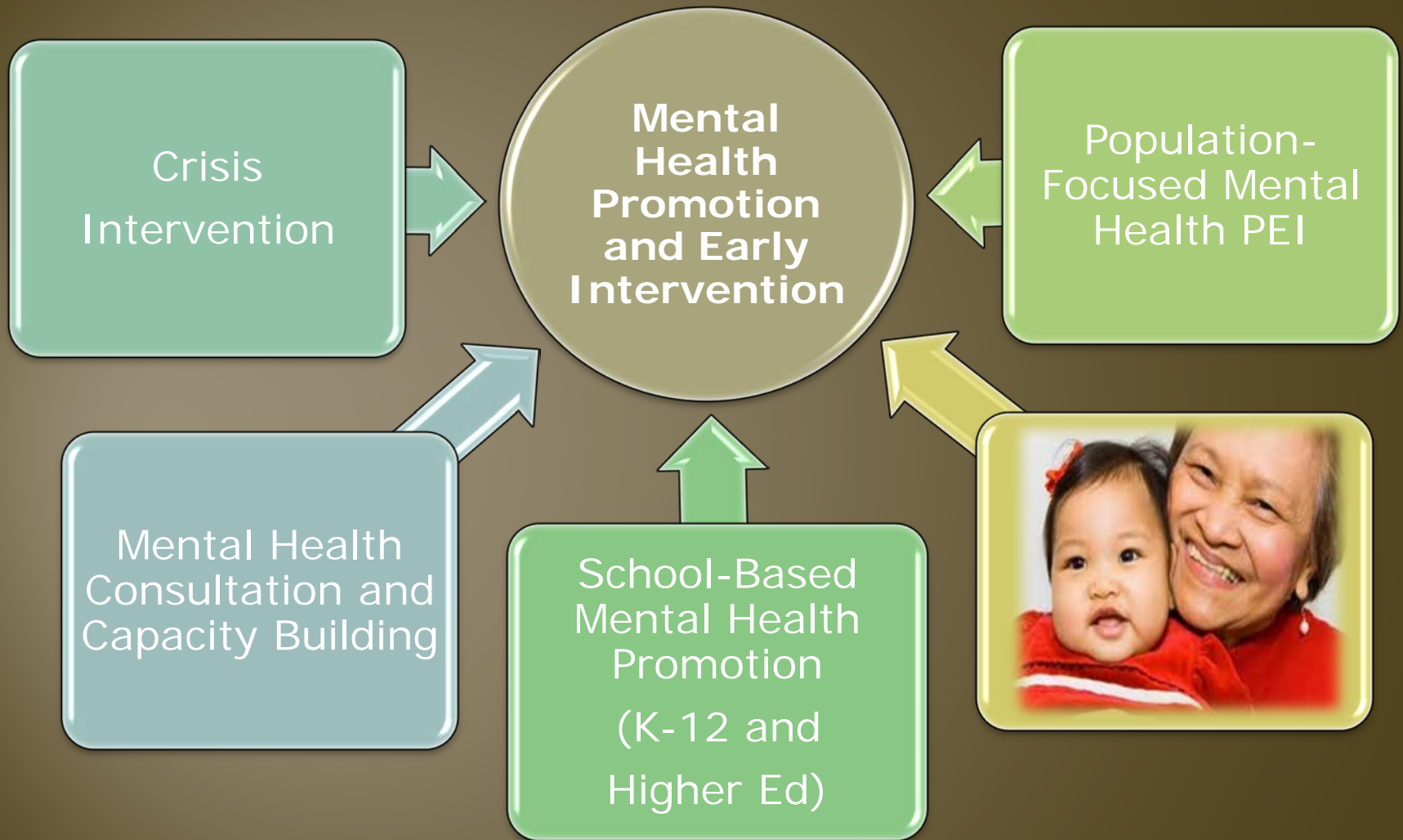
Trauma Recovery Programs

- Expand treatment in D-10

Dual Diagnosis Residential Treatment

Primary Care and Juvenile Justice Integration

Early Psychosis Program



- Asian and Pacific Islander (API)
- African American
- Native American
- Latino/Mayan
- Arab Refugees
- Homeless Adults
- Homeless or System Involved TAY (18-24)
- LGBTQ



Population-Focused Mental Health Promotion and Early Intervention



- Outreach and Engagement
- Screening and Assessment
- Wellness Promotion
- Individual and Group Therapeutic Services (short-term)
- Service Linkage





PEOPLE MAY
DOUBT
WHAT YOU SAY,
BUT THEY WILL
believe
WHAT YOU DO.





Remodeling



Information Technology (IT)

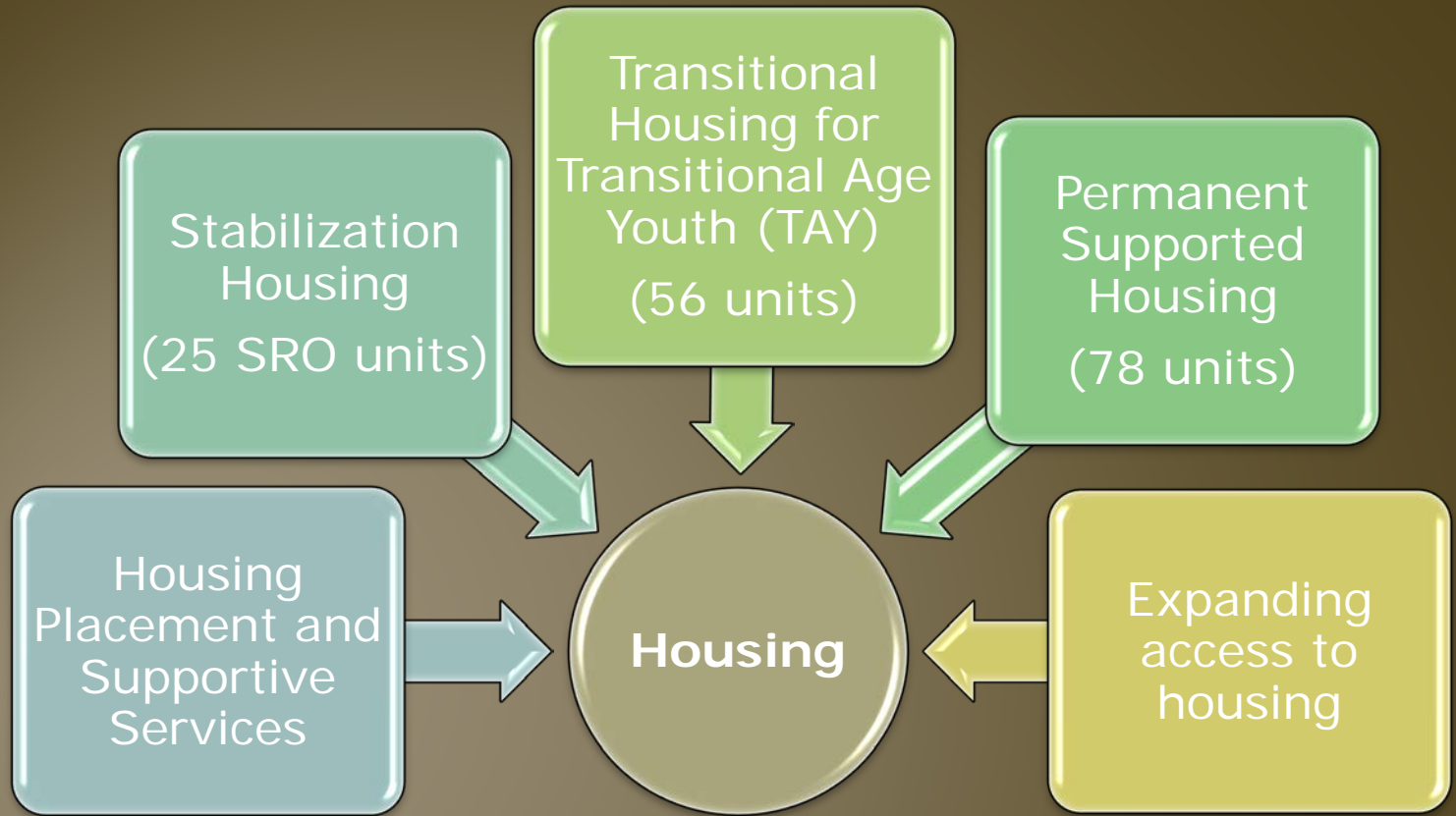


Peer-to-Peer Behavioral Health Services



Nutrition and Cooking

Vocational Services



Workforce Development

Financial Incentive Programs (state funded)

Mental Health Loan Assumption

Licensed Mental Health Service Provider Education Program

Residency and Internship Programs

Child and Adult Psychiatry Fellowship

Intern Coordinator

Mental Health Career Pathway

Summer Bridge

City College Certificate Program

John O'Connell

Address workforce disparities

Training and Technical Assistance

Seeking Safety, WMR, Medicinal Drumming

Capacity Building for Youth Providers and 12N

Trauma Training Institute

MH Training Program for Outreach Workers

Capital Facilities



- Silver Ave
- Redwood Center
- Sunset Mental Health
- Tom Waddell Urban Health Clinic

Southeast Health Center

Expanding Capital Improvements - SOMA

Information Technology



Vocational IT

Consumer Portal

System Enhancements



Questions?
Comments?
Get Involved!

Marlo Simmons, MPH

MHSA Director

255-3915 or marlo.simmons@sfdph.org

Feb 15,
2012



Stakeholder Engagement

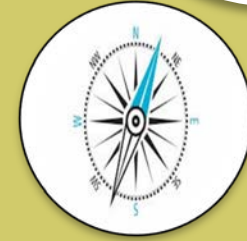
- MHSAs Advisory Committee
- Mental Health Board
- Client Council
- CBHS and DPH Leadership
- NAMI
- Health Commission
- CYF/Adult SOC Providers
- MHSAs Providers



Program Specific CPP

- Socially Isolated Older Adult Planning Committee
- FSP Needs Assessment
- First Impressions
- Trauma Recovery in D-10
- MHSAs Award Ceremony
- Evaluation with Populations Focused and School-Based
- SOMA Cap Facilities

June 18,
2014



Plan Distribution

- Posted on DPH website
- Via email to all MHSAs stakeholders, peer providers and Advisory Committee
- Developed At-A-Glance
- Additional Stakeholder Presentations

Fitting in to The Big Picture

SF Department of Public Health



SF
Health
Network

Population Health
Division

Hospitals

Ambulatory
Care

Prevention,
Environmental
and Population
Health

Community
Behavioral
Health
Services

MHSA

Funding and Vision