

HOSPITAL HEALTHCARE UPDATE REPORT

Presented to the JCC-ZSFG on February 27, 2018

By Susan Ehrlich, ZSFG Chief Executive Officer

REPORT CONTENTS:

1. ZSFG NAMED TO SMART CARE CALIFORNIA'S C-SECTION HONOR ROLL FOR MEETING FOR SURPASSING THE FEDERAL HEALTHY PEOPLE 2020 C-SECTION TARGET
2. WARD 86 CELEBRATES ITS 35TH BIRTHDAY
3. CALIFORNIA DEPARTMENT OF PUBLIC HEALTH (CDPH) FIRE, LIFE, AND SAFETY SURVEY
4. COMMUNITY BASED HEALTH SERVICES (CBHS) PROGRAM COMPLIANCE AUDIT FOR THE OPIATE TREATMENT OUTPATIENT PROGRAM (OTOP) IN WARD 93
5. PATIENT FLOW REPORT FOR JANUARY 2018
6. SALARY VARIANCE BUDGET REPORT

1 ZSFG NAMED TO SMART CARE CALIFORNIA'S C-SECTION HONOR ROLL FOR MEETING FOR SURPASSING THE FEDERAL HEALTHY PEOPLE 2020 C-SECTION TARGET

ZSFG was one of the fifteen public health care systems named to Smart Care California's C-section Honor Roll by the California Association of Public Hospitals and Health Systems (CAPH) for meeting or surpassing the federal Healthy People 2020 C-section target. These efforts include improving C-section rates, applying critical safety measures, ensuring that mothers get timely and high-quality prenatal and postpartum care, and achieving 'baby-friendly' status with Baby-Friendly USA.

CAPH President and CEO Erica Murray said "This recognition is a fantastic achievement, and a testament to the top-quality care public health care systems provide to their patients, including our very smallest."

Smart Care California is a public-private partnership working to promote safe, affordable health care for all Californians, convened by IHA with funding from the California Health Care Foundation.

This honor is a testament to the outstanding interdisciplinary work done by all who care for our pregnant patients and their families. Congratulations!

2 WARD 86 CELEBRATES ITS 35TH BIRTHDAY

Ward 86 celebrated its 35th birthday in January. Ward 86, which is our AIDS/HIV clinic here at ZSFG and run by the Division of HIV, Infectious Diseases and Global Medicine, was founded to fight a fatal, indiscriminate

disease that at the time no one understood, and many feared to the point of serious discrimination against those who suffered from it. Today, our team at Ward 86 are global leaders in HIV and infectious disease care.

The practice of “the San Francisco Model” of care—an approach that encourages integration and collaboration—has yielded innovations in patient care, and continues to build our understanding of HIV and to empower patients to thrive all over the world. In 2017, “The End of AIDS?” was named the recipient of a prestigious News & Documentary Emmy Award. The first episode of this six hour series features San Francisco, the Ward 86 team, and its patients. In December, in honor of World AIDS Day, the documentary was aired to a packed Carr Auditorium.

Over the three-plus decades of the epidemic, our community has continued to innovate and be dedicated to ending the epidemic. Our Golden Compass clinic opened one year ago to serve older people living with HIV, a circumstance that seemed impossible in the 1980s and 1990s. At the other end of the spectrum, the citywide initiative Getting to Zero has achieved the amazing result of a record low number of annual new HIV diagnoses, 223. This year, our Division of HIV, Infectious Diseases and Global Medicine will begin enrolling people into the world’s first intervention to test a cure strategy.

Happy Birthday to Ward 86!

3 CALIFORNIA DEPARTMENT OF PUBLIC HEALTH (CDPH) FIRE, LIFE, AND SAFETY SURVEY

During the week of February 8th, the California Department of Public Health (CDPH) visited ZSFG to conduct a Fire, Life, and Safety survey to investigate an electrical incident involving a bed on unit 4A.

The survey was a success without any deficiencies. The primary reason for the successful survey in spite of the electrical spark was the organization’s rapid response to the incident through R.A.C.E. (Rescue, Alarm, Contain, and Extinguish). In addition, following the event, the team conducted an inventory of all beds throughout the organization (ensuring an exact number and location). The safety checks were documented and completed in a timely manner. Additionally, the facilities team provided complete documentation to the inspector regarding the testing of the fire alarm system over the past year, with documentation that the fire alarms had been activated, and then re-activated in a timely manner.

Many thanks to the team for their rapid response and preparedness!

4 COMMUNITY BASED HEALTH SERVICES (CBHS) PROGRAM COMPLIANCE AUDIT FOR THE OPIATE TREATMENT OUTPATIENT PROGRAM (OTOP) IN WARD 93

On January 25th, surveyors from Community Behavioral Health Services (CBHS) arrived on campus to conduct a two-day survey of the Program Compliance Audit for the Opiate Treatment Outpatient Program (OTOP) in Ward 93. The auditors conducted a comprehensive medical record review of physician orders, dosing, treatment plans, and timeliness of documentation according to Title 9 and Title 22 regulations.

The staff successfully provided the auditors with the required documentation and confirming unit-based procedures demonstrating the program's regulatory compliance.

There were minor documentation findings identified for which action plans have been developed and implemented. Many thanks to the entire Ward 93 staff for all the work and preparation they have done for this comprehensive and very successful audit.

5 PATIENT FLOW REPORT FOR JANUARY 2018

Attached please find a series of charts depicting changes in the average daily census.

MEDICAL/SURGICAL

Average Daily Census was 226.68 which is 112% of budgeted staffed beds level and 90% of physical capacity of the hospital. 17.38% of the Medical/Surgical days were lower level of care days: 6.03% administrative and 11.34% decertified/non-reimbursed days.

ACUTE PSYCHIATRY

Average Daily Census for Psychiatry beds, **excluding 7L**, was 41.45, which is 94.2% of budgeted staffed beds and 61.9% of physical capacity (7A, 7B, 7C). Average Daily Census for 7L was 5.52, which is 78.8% of budgeted staffed beds (n=7) and 46% of physical capacity (n=12). Latest Utilization Review data from the INVISION System shows 95.1% non-acute days (82.96% lower level of care and 12.14% non-reimbursed).

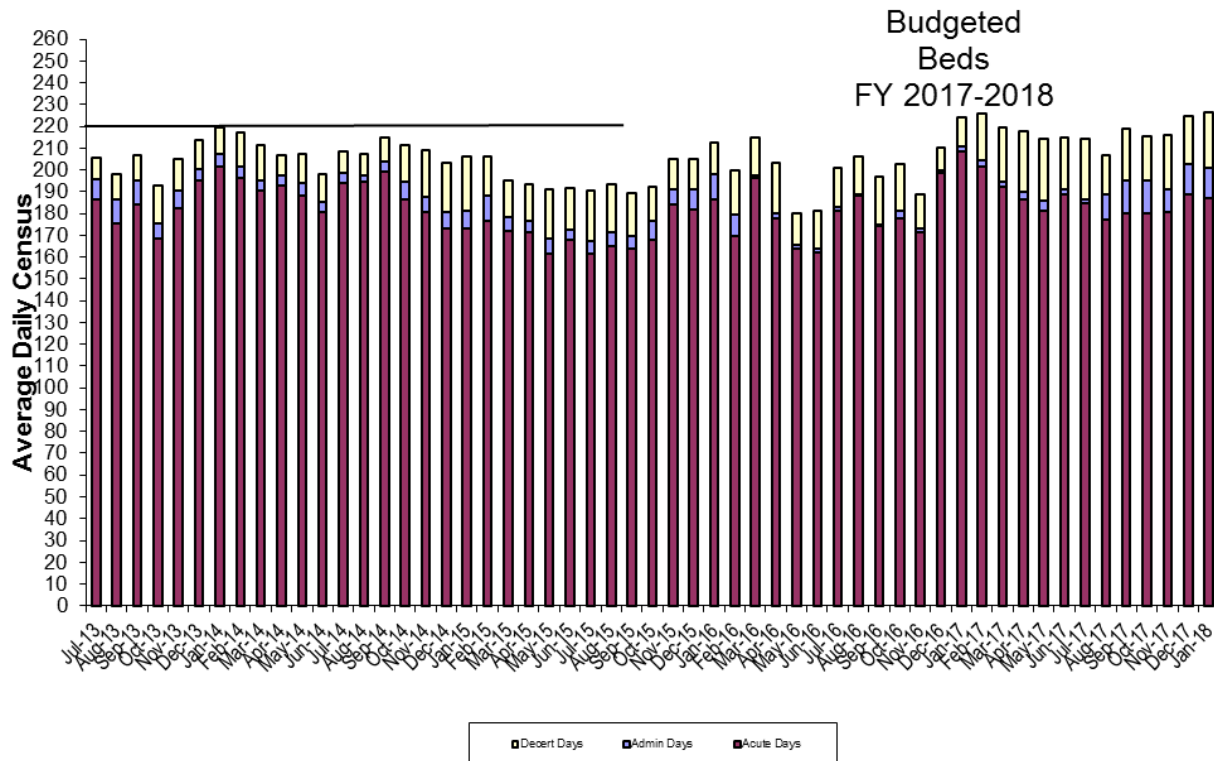
4A SKILLED NURSING UNIT

ADC for our skilled nursing unit was 30.3, which is 108% of our budgeted staffed beds and 101% of physical capacity.

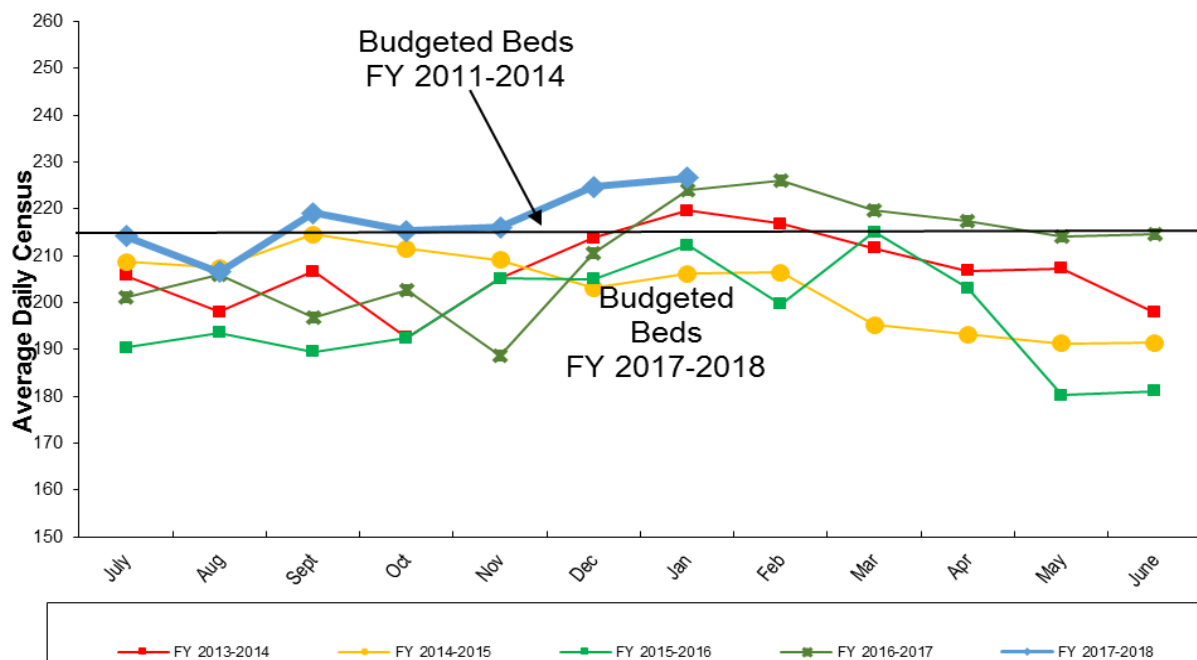
6 SALARY VARIANCE TO BUDGET BY PAY PERIOD REPORT FOR FISCAL YEAR 2017-2018

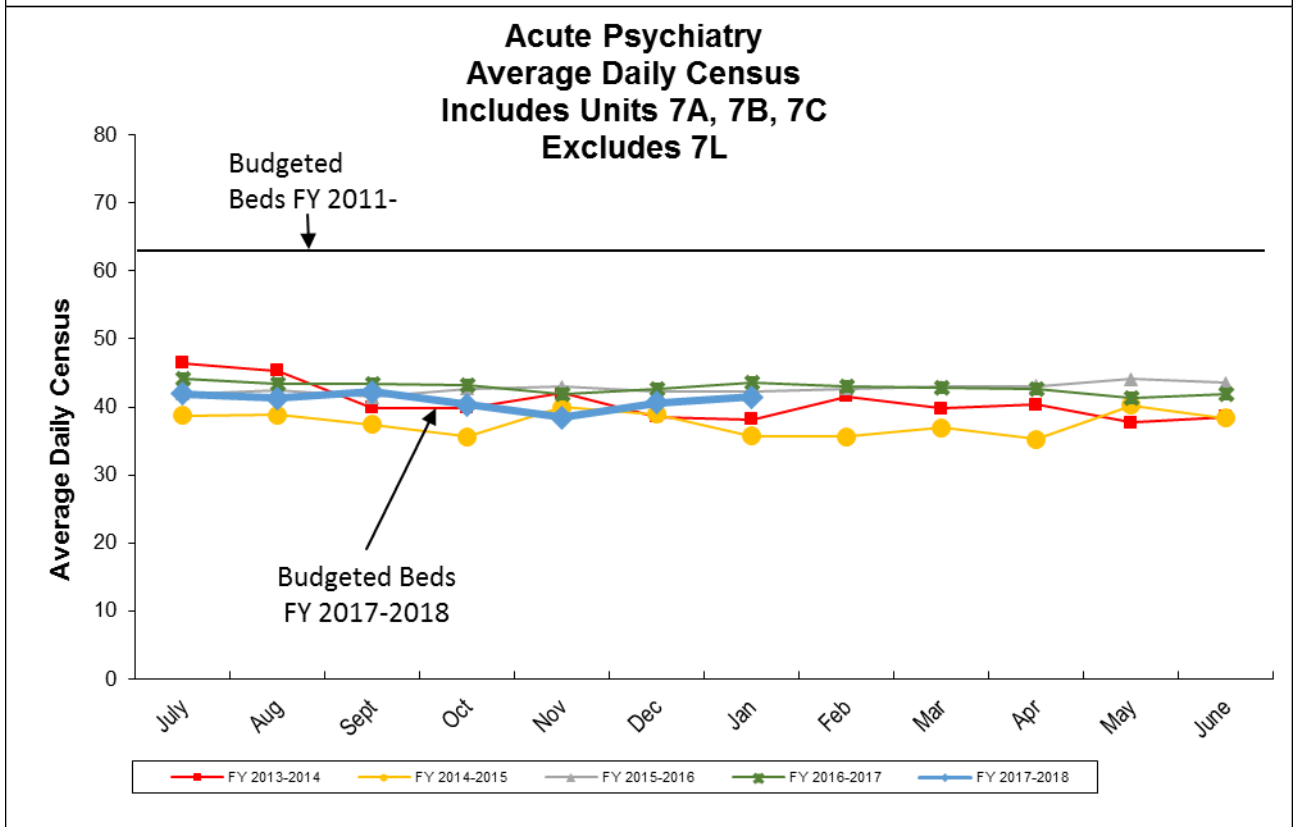
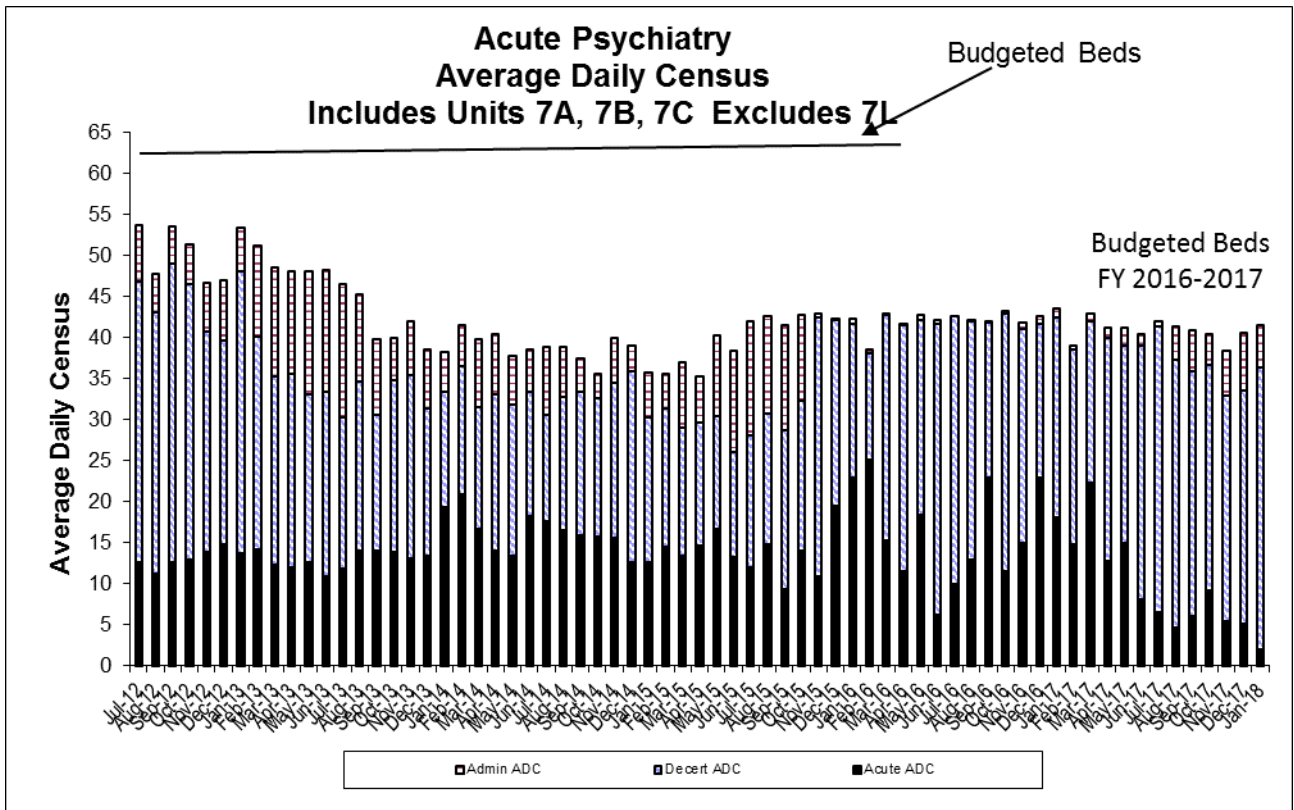
For Pay Period ending January 26, 2018, Zuckerberg San Francisco General recorded a 2.04% variance between Actual and Budgeted salary cost – actuals were \$301,743 over budget. For variance to budget year-to-date, ZSFG has a negative variance of \$6,150,641/4.2%.

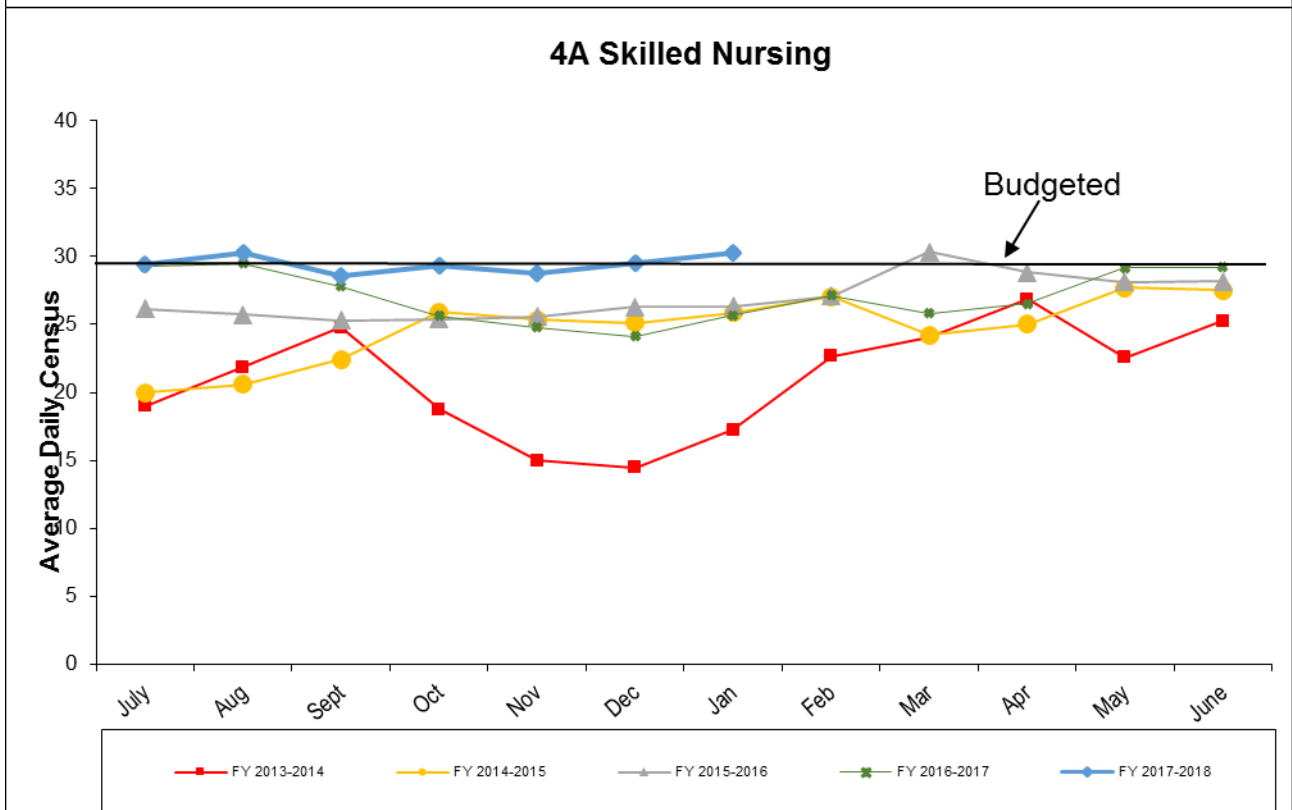
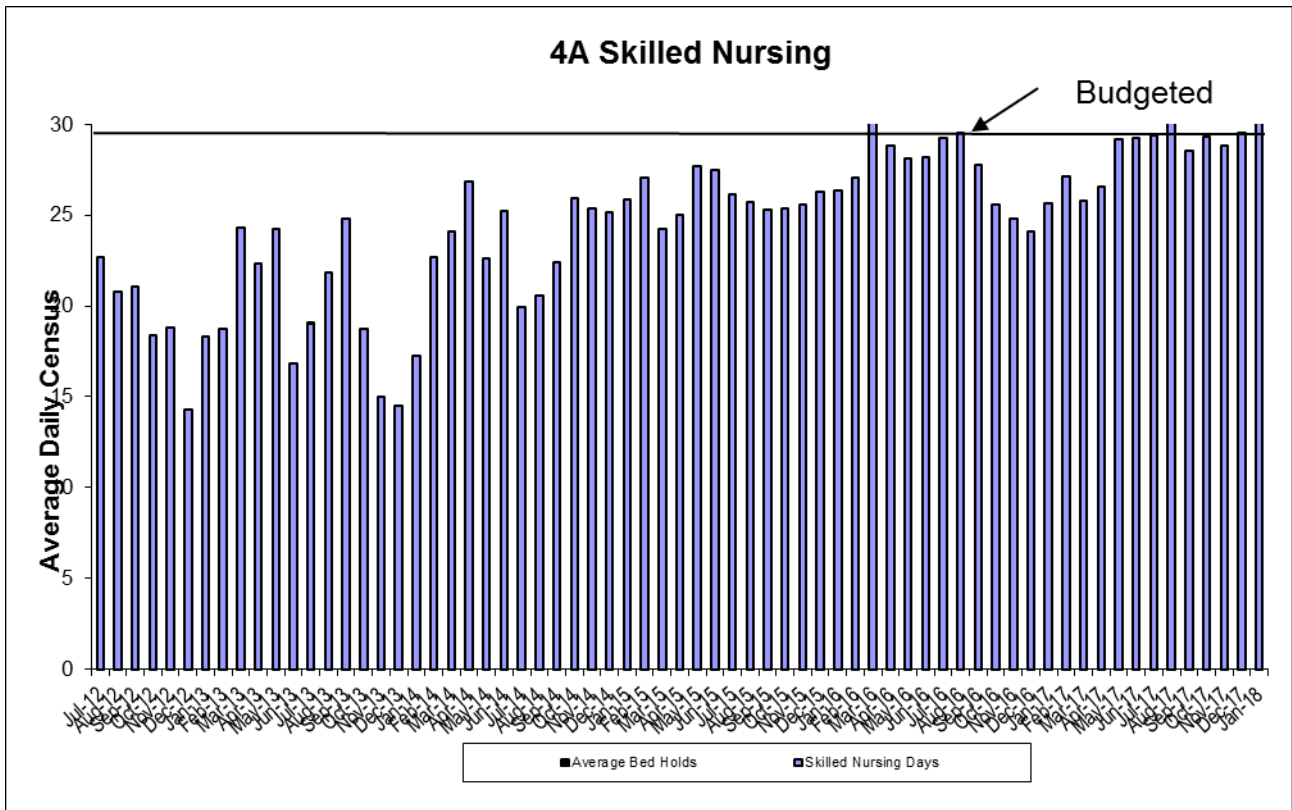
Medical/Surgical



Medical/Surgical







Variance Between Salary Expenditure and Budget by Pay Period (PP) and Year To Date (YTD)

