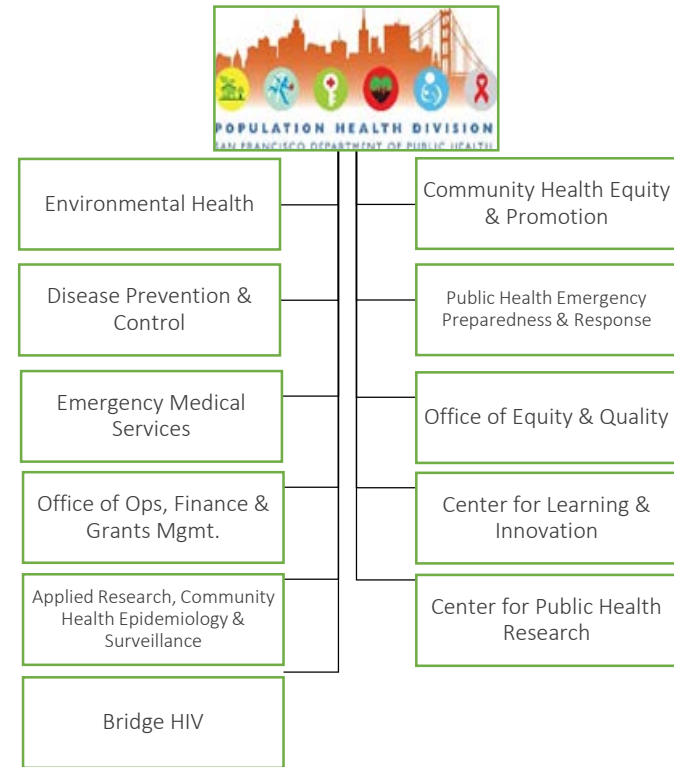
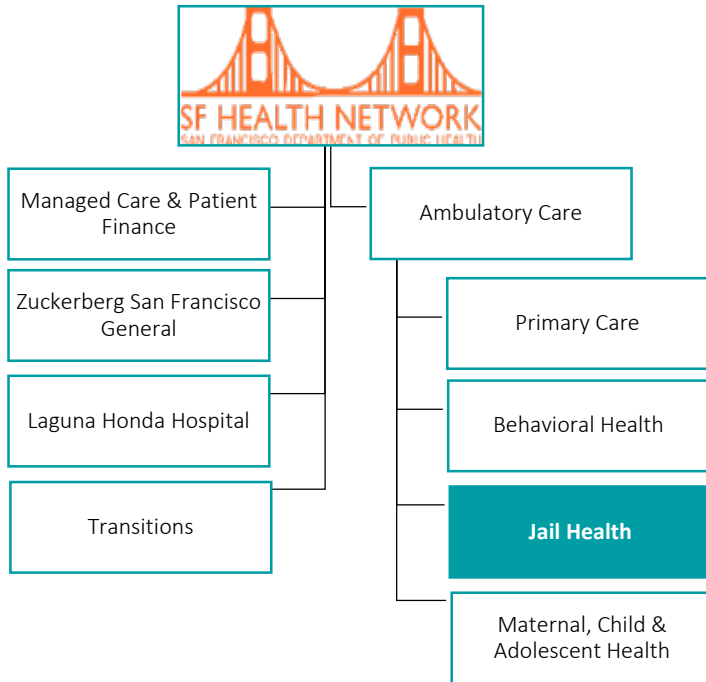
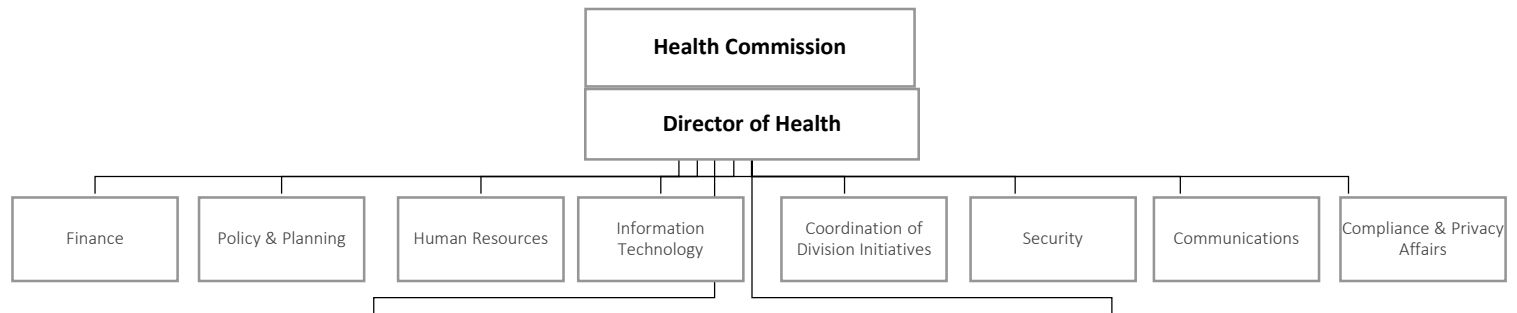
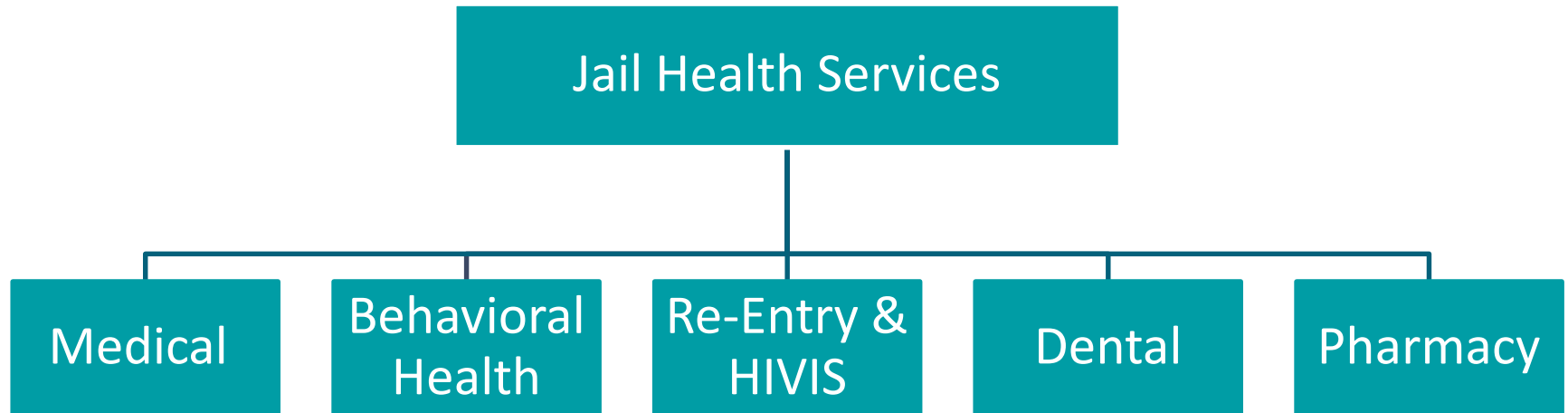




# Jail Health Services

**Lisa A. Pratt, MD, MPH**  
Director / Medical Director  
Jail Health Services





## 162 FTE

Nurse Managers	3.0	Psychologist	1.0
RNs	58.0	Therapists	18.0
LVNs	25.0	Counselors	7.0
MD/NPs	12.6		
Prevention/Reentry	4.0		
Pharmacists	3.0	Administration	4.0
Pharm Technicians	5.0	Support Staff	3.0
Dentist	1.4	Porters	9.0
Dental Technicians	2.0	Medical Records	3.0

## FY 16-17 Operating Budget

Salaries & Benefits	27,230,790
Professional & Specialized Services	2,574,768
▪ Includes X-RAY, Podiatry, UCSF OBGYN, partial BHS	
Pharmaceuticals	2,577,944
Material & Supplies	581,258
Other Expenses	282,224
	\$ 33,246,989

Total unique patients in FY15-16: **12,500**

Current average daily census: **1,300**

- 86% of people in SF Jail have not been sentenced
- 14% are serving a sentence
- 7-14% Seriously mentally ill

Average length of stay\*

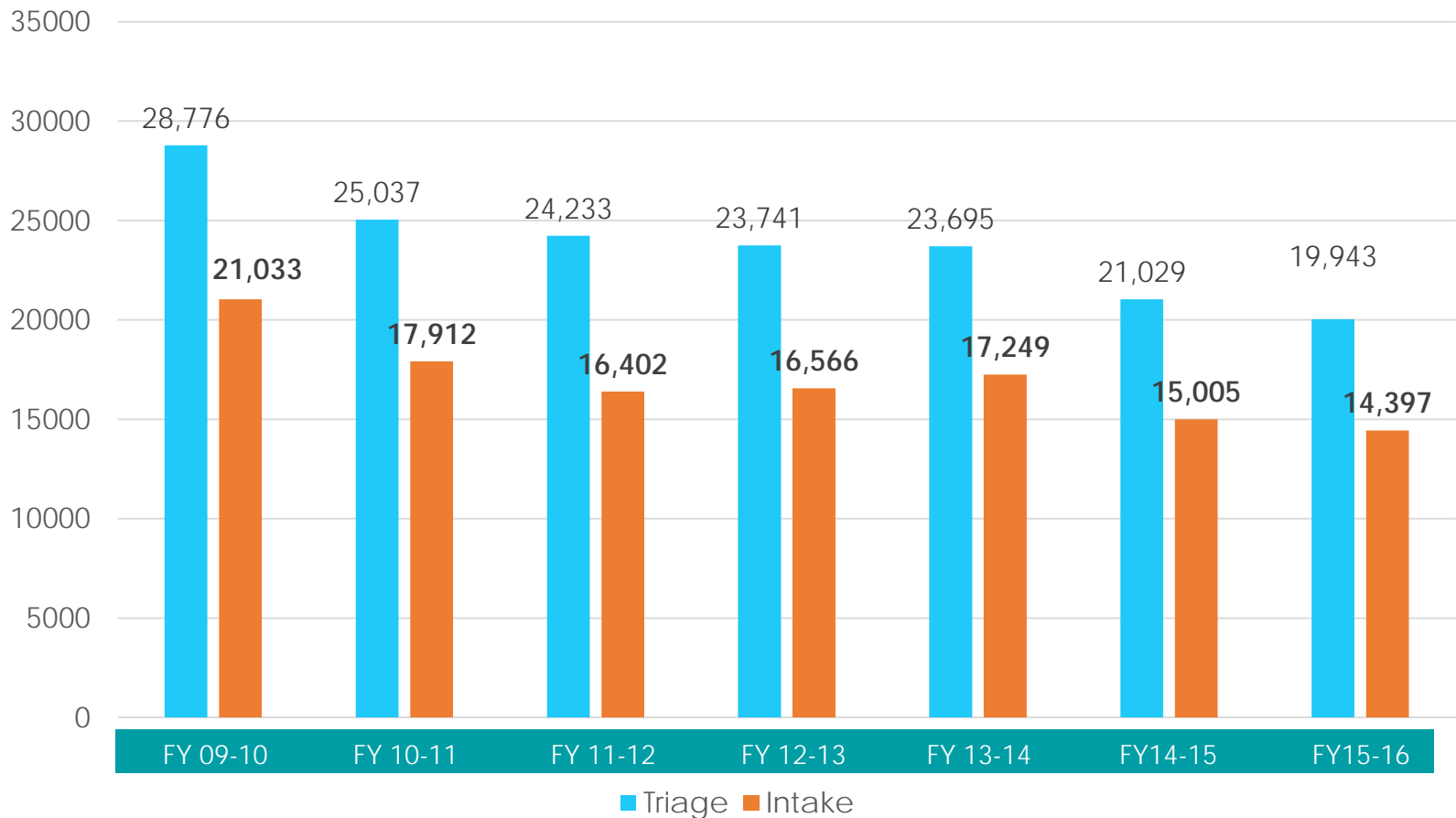
- 66% less than 7 days
- 18% 7-30 days
- 16% 30 days or more

Sex and Gender Identity

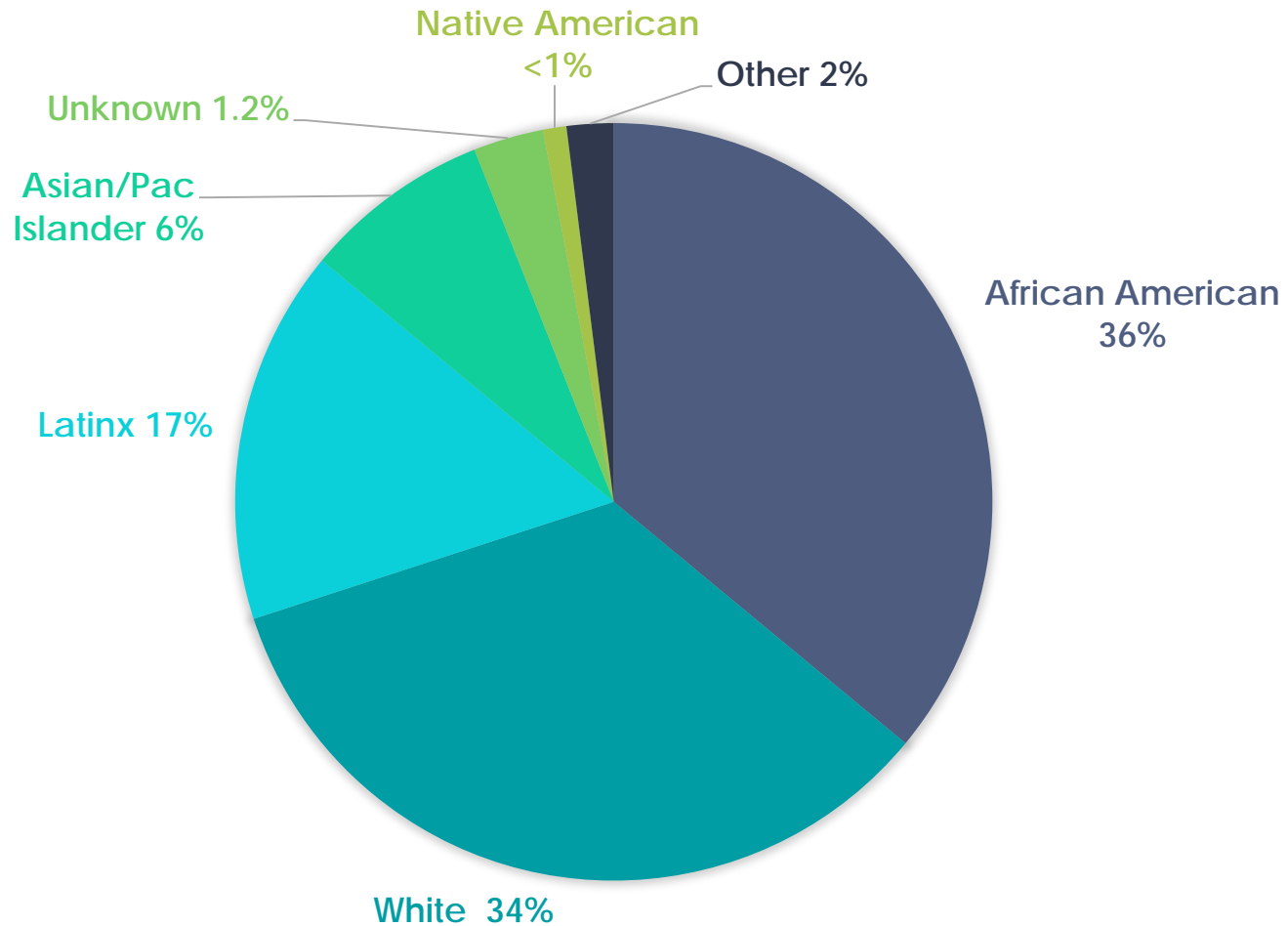
- 86% are men; 14% are women (SFSD)
- 76% men, 15% women, 8% declined to answer (JHS)
  - Trans Women 74, Trans Men 8

Source: SFSD; \*JHS

# SF Jail Entry 2009-2016



# Race/Ethnicity FY 15-16





Area	Topic
Safety	<ol style="list-style-type: none"> <li>1. Standardizing Naloxone use for Unresponsive Patients</li> <li>2. Immediate Medical Evaluation for Patients who Return from Higher Level of Care</li> </ol>
Quality	Linking HIV Patients to Primary Care in the Community Upon Release
Care Experience	Face to Face Triage Improvement, Quality and Quantity
Workforce	Workforce Development and Engagement: Assessment and Improvement
Financial Stewardship	Provider Productivity: Building the Right Care Model for Jail Health Services
Equity	Sexual Orientation / Gender Identification (SOGI) Data Collection

## Standardizing Narcan use for unresponsive patients

Goal: Increase the number of unresponsive patients who receive naloxone as part of the emergency response algorithm from baseline (unknown) to 75%

April 2016

- Data gathering: Emergency response documentation

July 2016

- EMR changes to improve documentation
- Data definitions

Sept 2016

- Nursing documentation feedback
- Data validation

Jan –Feb 2017

- Standard work procedures
- Training Plan

## Care Transitions: Immediate medical evaluation for patients who return from higher level of care

Goal: 85% of patients returning from ED or inpatient will be reviewed by next clinic day

### June 2016

- MD to MD handoff implemented
- EMR changes to improve data capture
- Test clinic process changes

### September-December 2016

- MET GOAL!
- EMR changes to improve documentation
- Data cleaning

### January 2017

- Standard work procedures
- Move to watch metric status



## Jail Health Services True North Dashboard

SFHN Executive Sponsor: **Alice Chen**  
Division Sponsor: **Lisa Pratt**  
Division Metric Owner: **Margaret Erickson**

### SAFETY

Date Range  
September 2016 to January 2017

**911**

Total number of post-discharge appointments for date range selected

**88.3%**

Percent of appts completed within 1 clinic day for date range selected

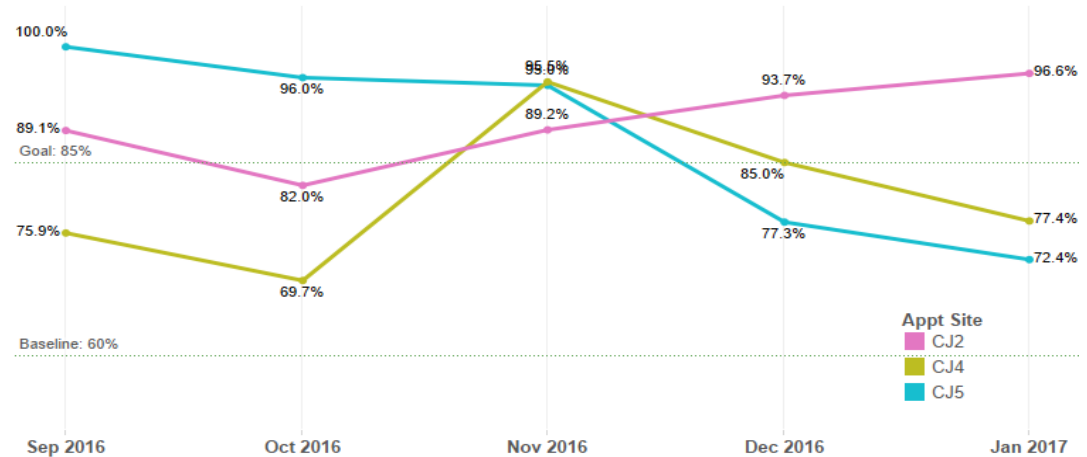
**90.2%**

Percent of appts completed within 1 clinic day (last month)

**Goal: 85%**

Baseline: 60%

% of post-discharge appointments completed within 1 clinic day of hospital or ED discharge, by site



### Appointments completed within 1 clinic day, by site

Appt Site	Month of Appt Se...	Completed	Not Completed
CJ2	September 2016	115	14
	October 2016	105	23
	November 2016	116	14
	December 2016	119	8
	January 2017	140	5
CJ4	September 2016	22	7
	October 2016	23	10
	November 2016	21	4
	December 2016	17	3
	January 2017	24	7
CJ5	September 2016	21	4
	October 2016	24	4
	November 2016	19	4
	December 2016	17	5
	January 2017	21	8

### Patient Data

Select a bar in the left chart to show the underlying patient data.  
Select the bar again to deselect and clear patient data.

## Jail Health Services True North Dashboard

SFHN Executive Sponsor: **Alice Chen**  
Division Sponsor: **Lisa Pratt**  
Division Metric Owner: **Tanya Mera**

### QUALITY

**Date Range**  
September 2016 to January 2017  
and Null values

**228**

Total number of discharges for date range selected

**27.63%**

Percent of HIV positive patients given discharge packets for date range selected

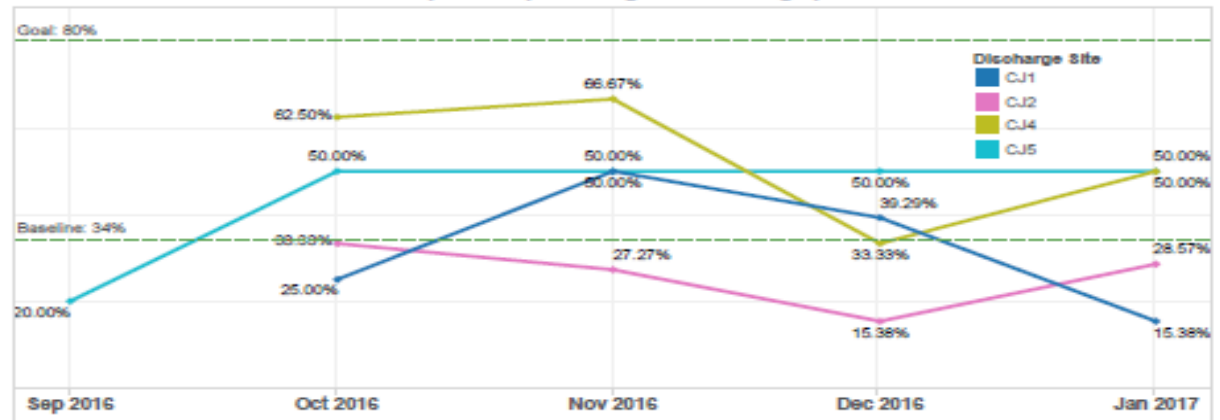
**26.67%**

Percent of HIV positive patients given discharge packets (last month)

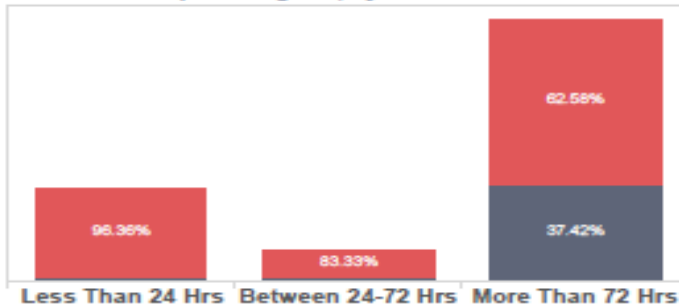
**Goal: 80%**

Baseline: 34%

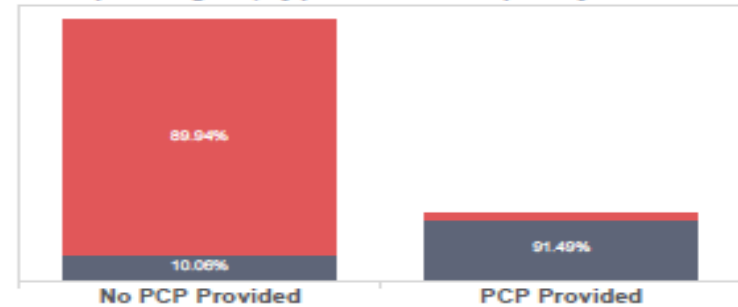
**% of HIV positive patients given discharge packets**



**% of packets given, by number of hours**



**% of packets given, by pre-incarceration primary care status**



## **Stratification Tools**

- Screening instrument to determine level of care
- Validated suicide assessment tool

## **Psychiatry Coordination and Staffing**

- Inpatient and jail coverage by same team
- Coordination of PES transfers and 7L admissions/discharges

## **Medication Management**

- Continuity of medication – pilot study with UCSF Psychiatry Fellow
- Increase number of prescribers

- Staff photo....