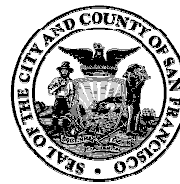


# **HUMMINGBIRD PLACE PSYCHIATRIC RESPITE Behavioral Health Navigation Center**

San Francisco Department of Public Health  
SFHN TRANSITIONS DIVISION

Presented by: Luis Calderon, Transitions Care Coordinator Director  
April 17, 2018



San Francisco  
Health Network

SAN FRANCISCO DEPARTMENT OF PUBLIC HEALTH

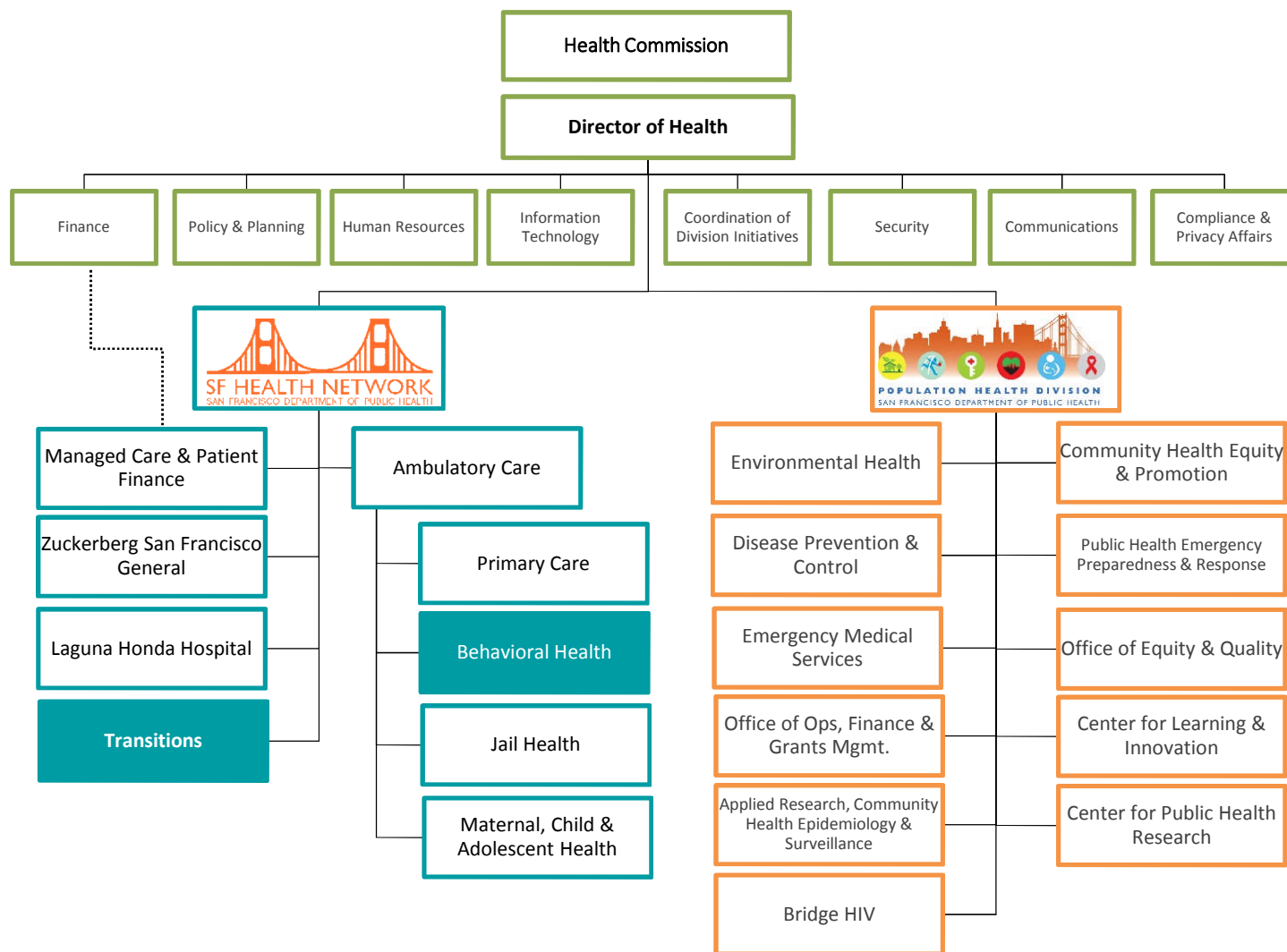


# Department of Public Health Organizational Chart



San Francisco  
Health Network

SAN FRANCISCO DEPARTMENT OF PUBLIC HEALTH



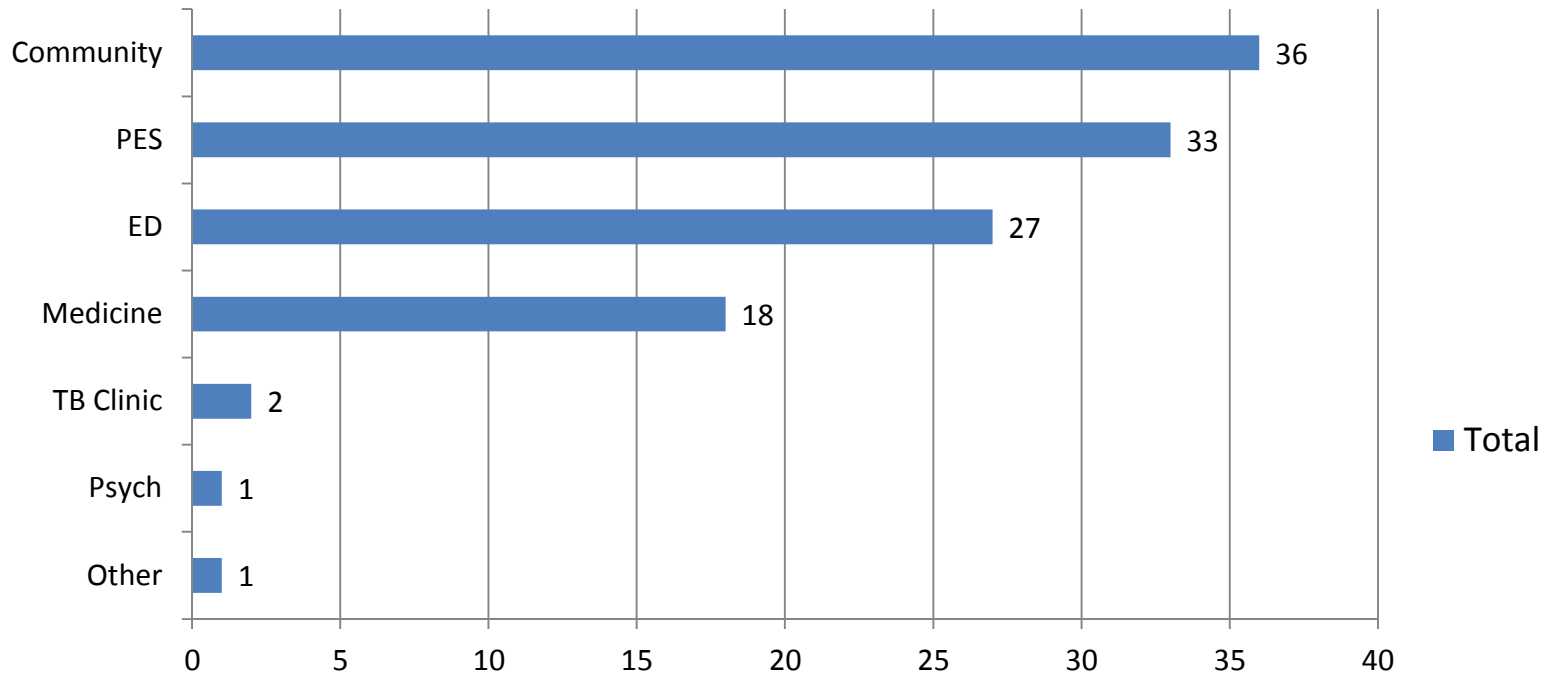


# Hummingbird Place *In and Out*



San Francisco  
Health Network

SAN FRANCISCO DEPARTMENT OF PUBLIC HEALTH



	Other	Psych	TB Clinic	Medicine	ED	PES	Community
Total	1	1	2	18	27	33	36

**Period: 8/30/17-3/31/18**

Shortest stay

1 day

Longest stay

167 days

Average Length of Stay for Overnight clients

20.67 days

**Total # of clients (duplicated)**

**118**



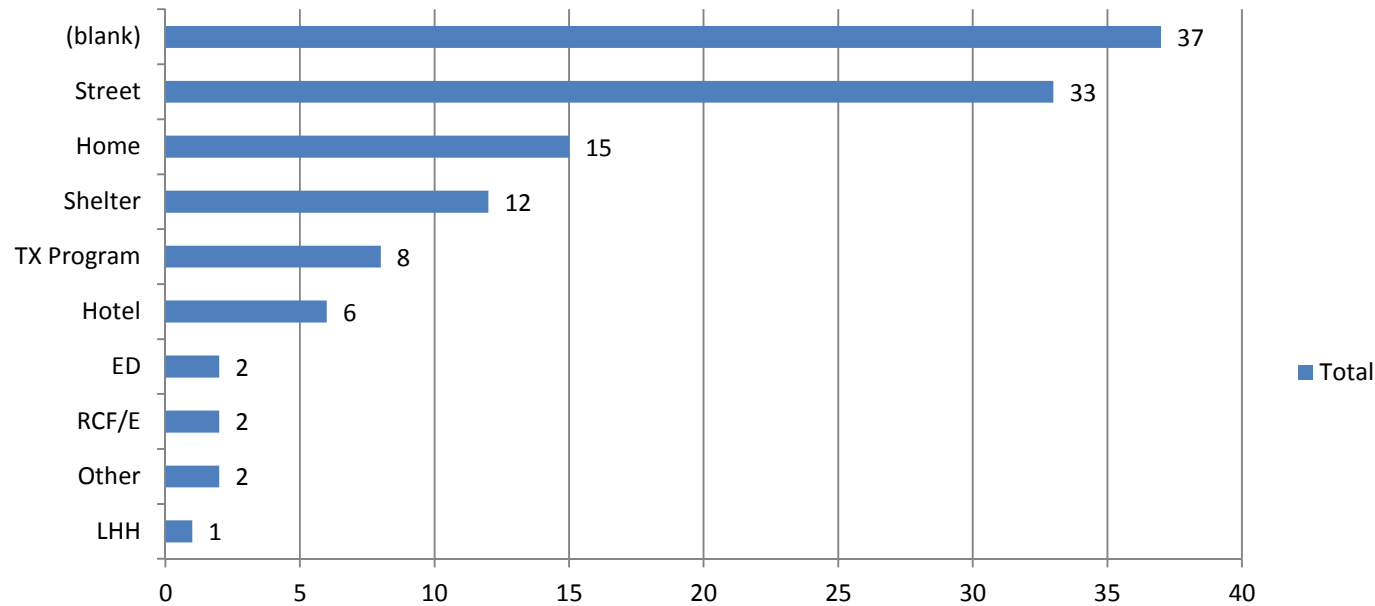
# Hummingbird Place *In and Out*



San Francisco  
Health Network

SAN FRANCISCO DEPARTMENT OF PUBLIC HEALTH

## DISCHARGED DESTINATION



	LHH	Other	RCF/E	ED	Hotel	TX Program	Shelter	Home	Street	(blank)
■ Total	1	2	2	2	6	8	12	15	33	37

**Period: 8/30/17-3/31/18**

Shortest stay

1 day

Longest stay

167 days

Average Length of Stay for Overnight clients

20.67 days

**Total # of clients (duplicated)**

**118**



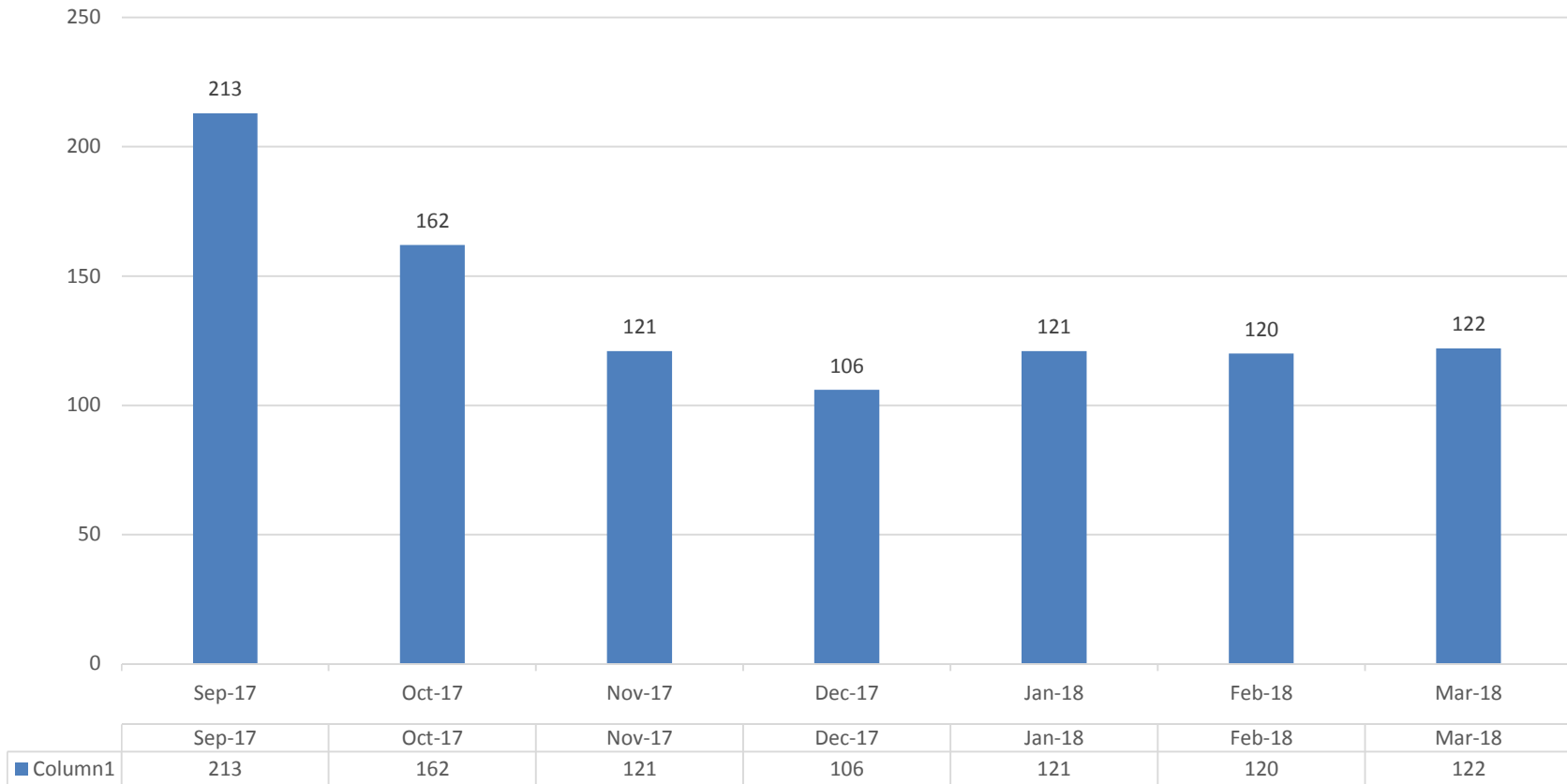
# Hummingbird Place *Day Drop In*



San Francisco  
Health Network

SAN FRANCISCO DEPARTMENT OF PUBLIC HEALTH

### Hummingbird Day Drop-In





## Hummingbird Place *Wraparound Services*



San Francisco  
Health Network

SAN FRANCISCO DEPARTMENT OF PUBLIC HEALTH

- Motivational Interviewing to encourage engagement in treatment and services
- Socialization
- Supportive counseling and validation
- Link to medical and mental health care
  - provide onsite if not ready to go to clinic
- Assist with obtaining photo identification, Medi-Cal, Social Security benefits, CAAP,
- Reunite with families and escort when out of area



## Hummingbird Place *Neighborhood Impact*



San Francisco  
Health Network

SAN FRANCISCO DEPARTMENT OF PUBLIC HEALTH

- Opportunity to bring clients engaged in the neighborhood directly to drop in when appropriate
- Clients brought into the Emergency Room or Psychiatric Emergency Services can be cleared and transferred to Hummingbird quickly



## Hummingbird Place *Treatment Partners*



San Francisco  
Health Network

SAN FRANCISCO DEPARTMENT OF PUBLIC HEALTH

- PRC/Baker Places: mental health, dual diagnosis crisis, residential, transitional treatment, medical detox
- Progress Foundation: mental health crisis, residential, transitional treatment
- HealthRight 360: substance use disorder and dual diagnosis residential treatment, social detox
- Additional Community Treatment Providers: Friendship House, Harbor Light, Mission Council to name a few
- SFHN Transitions Placement Team conducts Utilization Management and Utilization Review to monitor appropriate use of program beds to ensure flow.





## Hummingbird Place *Behavioral Health Access*



San Francisco  
Health Network

SAN FRANCISCO DEPARTMENT OF PUBLIC HEALTH

- Street Medicine and Shelter Health hold clinics at Navigation Centers
- Hummingbird has on-call access to the SFHN Transitions Care Coordination Behavioral Health Clinicians
- Treatment Access Team is available to make site visits if clients are not able to come to the Behavioral Health Access Center

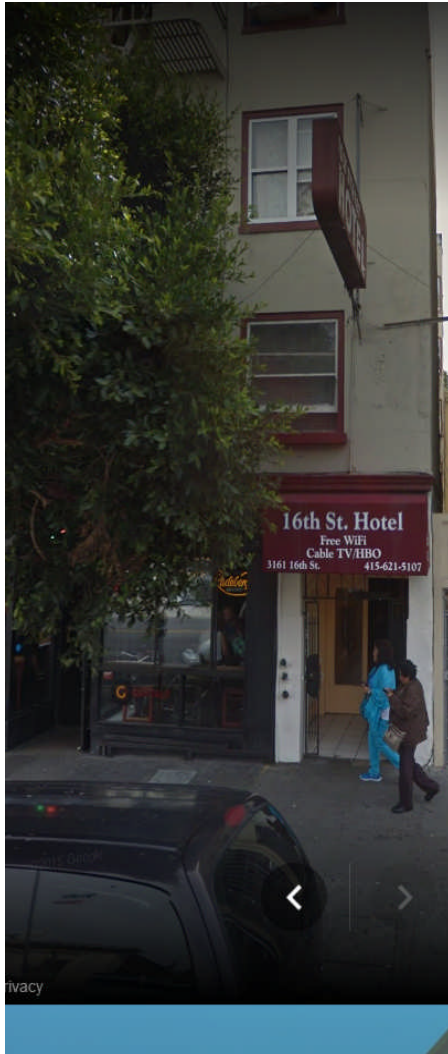


# Hummingbird Place *Alice*



San Francisco  
Health Network

SAN FRANCISCO DEPARTMENT OF PUBLIC HEALTH



- Initial engagement by Comprehensive Crisis Team near 16<sup>th</sup> Street and Mission
- 5150 to ZSFGH
- Discharge to Hummingbird Place
- Warm hand off to SFHN Transitions Care Coordination Team
- Assigned to a Tagalog speaking Public Health Nurse
- Discovered she enjoyed eating Filipino food
- Transitions Care Coordination brings Filipino food to Hummingbird
- Determine Alice is not interested in following up with ongoing medical work up. Options explained and she decides to move to the Sixteenth Street Hotel
- Provided television, soft mattress topper and set up the room
- Provide ongoing medical and social support care on a home visiting basis